

AUDITOR'S ACCOUNT WITH THE COUNTY TREASURER

TO THE HONORABLE BOARD OF COUNTY COMMISSIONERS OF FALL RIVER COUNTY:

I hereby submit the following report of my examination of the cash and cash items in the hands of the County Treasurer of this County on this 31<sup>st</sup> day of August, 2018.

Total Amt of Deposit in First Interstate Bank: \$89,925.40

Total Amt of Deposit in First National Bank of Lead: \$1,000.00

Total Amount of Cash: \$3,130.43

Total Amount of Treasurer's Change Fund: \$ 900.00

Total Amount of Checks in Treasurer's Possession Not Exceeding Three Days: \$19,731.94

SAVINGS:

First Interstate Bank : \$402,835.67

First National Bank of Lead: \$1,019,387.16

CERTIFICATES OF DEPOSIT:

First Interstate-Hot Springs: \$3,653,492.10

Black Hills Federal Credit Union: \$250,000.00

Bank of the West \$506,381.99

Schwab Treasury \$1,000,000.00

Itemized list of all items, checks and drafts that have been in the Treasurer's possession over three days:

Register of Deeds Change Fund: \$500.00

Highway Petty Cash: \$20.00

Election Petty Cash: \$15.00

RETURNED CHECKS:

Nielsen, Teresa \$489.20, Lic 08/06/2018

Bayan, Fritchie \$957.52, Lic 08/24/2018

TOTAL \$6,948,766.41

Dated This 31<sup>st</sup> Day of August, 2018.

  
Sue Ganje, County Auditor of Fall River County.

County Monies: \$6,642,284.31

Held for other Entities: \$112,913.41

Held in Trust: \$193,568.69

TOTAL: \$6,948,766.41

The Above Balance Reflects County Monies, Monies Held in Trust, and Monies Collected for and to be remitted to Other ENTITIES: SCHOOLS, TOWNS, TOWNSHIPS, FIRE AND AMBULANCE DISTRICTS, AND STATE.

# Cascade Fire District

27974 Cascade Road  
Hot Springs, SD 57747

Board of Directors  
Mike Hackenbruch, President  
Cheryl Fair, V. Pres.  
Cynthia Reed, Sec/Treas  
Ted Wick

To: Fall River County Commissioners

Date: July 24, 2018

Re: appointment to fill vacancy on Cascade Fire District Board of Directors

Our Board currently has a vacancy because one of our Directors has resigned.

We have obtained consent from Ed Pellicotte, a landowner within Cascade Fire District, to serve out the remainder of the term, and would respectfully request that you appoint him to do so. The term is to expire in January of 2019.

Thank you very much for your consideration of this matter.

---

Mike Hackenbruch, President  
Cascade Fire District Board of Directors

---

Cynthia Reed, secretary/treasurer  
Cascade Fire District Board of Directors

## Codified Laws

Hide Search ▲

### Text Search

#### Text

Search

#### Filter

Filter

#### Sort By

Relevance ▼

Search Text ⓘ

### Quick Find

#### Statute

34-31A-15.1

Get Statute ⓘ    Get Chapter ⓘ

Printer Friendly

34-31A-15.1. Filling of vacancy on board of directors. The board of county commissioners shall fill a vacancy on the board of directors of a rural fire protection district by appointing a voter of the district who meets the requirements in § 34-31A-13 to complete the unexpired term.

Source: SL 1987, ch 257.

[Back to Chapter 34-31A](#)

[Get Chapter 34-31A](#)



# Rapid Fire Protection Inc.

1530 Samco Road - Rapid City, SD 57702  
Phone: 605.348.2342 - Fax: 605.348.0108



Date: August 31, 2018

Attn: Fall River Courthouse / Hot Springs, SD

Subject: 5-Year Internal Obstruction Inspection

## Scope:

1. During your most recent sprinkler inspection we found that your 5-year internal obstruction inspection is past due.
2. Our proposal is based off of Sprinkler Inspection performed in: **August 2018**
3. Our inspection includes the following per NFPA-25 requirements:
  - a. Inspect your fire sprinkler system and system functions as outlined in the NFPA25 for a 5-year obstruction test.
  - b. Internal investigation of obstructions
    - i. System valve
    - ii. Riser
    - iii. Cross main
    - iv. Branch line
  - c. Internal investigation of obstructions of dry valve and wet alarm valve(s).
  - d. Internal investigation of obstructions of all check valves and strainers(s).
  - e. Replace all outdated gauge(s)
  - f. Drain Aux. drain(s).
  - g. Flow Main drain
  - h. Advise and alert you to the condition of your system.
  - i. File N.F.P.A. Inspection Reports with you and the authority having jurisdiction.

## Clarifications:

1. Our proposal includes does not include taxes except.
2. Owner is responsible to maintain the system to NFPA requirements.
3. Fire hose cabinets will be visually inspected, any valves or hoses that do not pass will be quoted for testing or for replacement. Hoses over 10 years of age will be removed (if applicable)
4. If impairments are found that require extensive line by line disassembling or flushing this work falls outside the scope of this inspection and will be quoted and done at another time.
5. Price is subject to AHJ and/or engineer approval and may vary with any additional AHJ and/or Engineer requirements.
6. We guarantee our pricing for 30 days. After this time period we may withdraw this bid for any reason.

## Exclusions:

1. Our proposal does not include any night or overtime work.
2. Our proposal does not include a lift if applicable; owner must provide or there will be an additional charge.
3. Our proposal excludes underground supply lines and fire hydrant testing.
4. Our proposal does not include external water storage tanks (if applicable)

**Our base bid complete is One Thousand Seventy Five Dollars (\$1,075.00)**

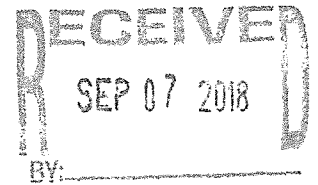
Please call (605)348-2342 or email [service@rapidfireinc.com](mailto:service@rapidfireinc.com) to schedule this work.

Sincerely,

*Charna Winger*

Rapid Fire Protection, Inc.

Accepted By: \_\_\_\_\_ Date: \_\_\_\_\_



# **PROPOSAL**

## **FALL RIVER COUNTY COURTHOUSE AND ANNEX PARKING LOT SNOW REMOVAL AND ICE CONTROL 2018-2019**

**SPITZER CONSTRUCTION INC  
27235 WIND CAVE ROAD  
HOT SPRINGS, SD 57747**

**SPITZER CONSTRUCTION INC PROPOSED TO PROVIDE  
THE FOLLOWING SERVICES TO FALL RIVER COUNTY  
STARTING DATE 11-1-2018 THROUGH 5-1-2019**

**-SNOW REMOVAL ON BOTH THE COUNTY COURTHOUSE  
PARKING LOT AND ANNEX PARKING LOT TO INCLUDE  
BOTH THE NORTH AND EAST PARKING AREAS AT THE  
COURTHOUSE AND NORTH AND WEST AREAS AT THE  
ANNEX.**

**-ICE CONTROL AS NECESSARY IN WALKING AND PAVED  
PARKING AREAS**

**-SNOW REMOVAL TRIGGER IS 1" OF SNOW**

**SNOW SEASON 2017-2018 PAYMENTS \$9625.00**

**PROPOSAL- A SEASONAL CONTRACT IN THE AMOUNT  
OF \$8000.00 ANNUALLY.**

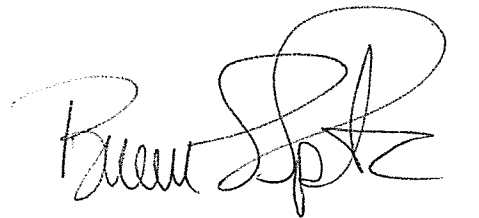
**PRICE AND CONTRACT IS FOR A PERIOD OF 5 YEARS.**

**BRIAN SPITZER**

**PRESIDENT**

**SPITZER CONSTRUCTION INC**

**"WE'RE BUILDING QUITE A RESUME' "**

  
9-5-2018

# Horwath Laundry Equipment

1880 Centre St.  
 Rapid City, SD 57703  
 605-343-3507; Fax: 605-343-5929

# Quote

Date	Quote No.
9/13/18	1745

Name/Address
Fall River Community Jail 906 N. River St. Hot Springs, SD 57747

Contact	P.O.
Lyle	

Item	Description	Qty	Cost	Total
HT025NN	Huebsch OPL Electric Heated Dryer, 25lb Capacity, Non Reversing, Galaxy OPL Electronic Display, Overdry Protection. 208/240/60/1 Phase	1	3,680.00	3,680.00
Install	Installation will consist of bringing in the new equipment, and setting equipment In place. Final utility connections to be done by others		375.00	375.00
YDEE7RGS173TW01	Huebsch Electric Dryer, Microprocessor Controls, Controls On The Rear, 208-240 Volts.  We Do Not Have These Dryers In Stock	0	650.00	0.00

Signature	<b>Total</b>	<b>\$4,055.00</b>
-----------	--------------	-------------------

**Huebsch is the answer.**



OPL  
25-35 lb DryStar™ Tumble Dryers  
and 30-45 lb TwinStar™  
Stack Tumble Dryers







## Huebsch is the answer.

Anybody can sell you laundry equipment and discuss the merits of each nut and bolt. However, at Huebsch, our priority is answering your questions about how working with us will make your business easier to run and more profitable.

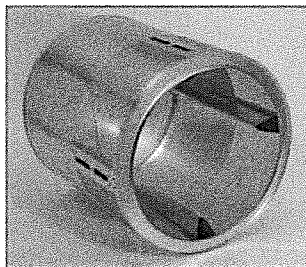
Customers have selected Huebsch products for their ease of use, supreme durability and because owning a Huebsch product brings a service and support network that's unmatched within the industry. For profitability, reliability and ease of use, Huebsch is the answer.

## Staying a Load Ahead

How are Huebsch DryStar™ tumble dryers the answer to helping my operation stay on top of its laundry challenges?

### **Highly efficient.**

Huebsch DryStar™ tumble dryers utilize an axial airflow process, which reduces energy consumption and produces some of the industry's fastest dry times. This innovative drying process directs all heated air through the load at the optimum time in the tumble process. Faster drying cycles reduce processing times and help your operation maximize throughput.



### **Extra capacity.**

With today's large capacity washers, it's easy for there to become backups on the drying side. Huebsch DryStars™ are offered in 25, 30 and 35 lb models to alleviate this scenario. Even the 25 lb model boasts a spacious 7.7 cu. ft. cylinder for efficient drying of large loads, ultimately giving your operation the tools for maximum productivity.

## Quality You Can Touch

Laundry equipment is a sizable investment, how do I know Huebsch products are up to the rough demands of my on-premises laundry?

### Rugged doors.

Doors can expect to see their share of slamming, wear and tear and overall mistreatment. DryStar™ and TwinStar™ doors are made of stainless steel to resist chipping and incorporate durable latches and hinges, to stand up to years of wear and stay looking good. You will see, feel and hear the quality every time you open or close the door.

### Rugged shells.

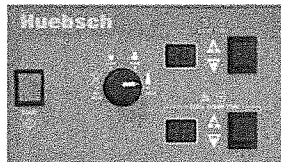
Huebsch electrostatically applies paint for superior bonding. A baking process then produces a hard exterior shell that's both durable and looks good.

### Staying in control.

DryStar™ models can be configured with either the Galaxy control or Dual Digital control. The Galaxy control features 30 programmable cycles and three cycle types that allow for greater consistency in drying. Laundry managers will see savings on their energy and labor costs as well as extended linen life. With the Dual Digital control, operators can set drying time (0-60 minutes), cool down time (0-15 minutes) and temperature (high, medium, low, no heat). Additional user-friendly features include a one-touch cycle repeat, automatic anti-wrinkle extended tumble and time remaining display.



Galaxy Control



Dual Digital Control

## Easy To Own

How do DryStar™ models make things easier on me as an owner?

### Low maintenance.

Large lint compartments mean DryStars™ don't have to be emptied as often as other models. Huebsch's

TwinStar™ Stack Tumble Dryers feature a new twist latch that eliminates the need for a key, saving additional time. In addition, a heavy-duty belt delivers a long life to reduce maintenance time and costs.

## Short on Time and Space?

My laundry needs more drying capacity, but lacks the room to add equipment. How can Huebsch meet my needs?

### Stack up the drying power.

The Huebsch TwinStar45™ and TwinStar30™ stack tumble dryers deliver 90 and 60 lbs of capacity, respectively. Laundries get the benefit of having two tumble dryers in the space of one. Best of all, splitting wash loads between the two cylinders delivers faster drying results than putting the full load in a 50 or 75 lb radial airflow tumble dryer.

### A perfect fit.

Not only do Huebsch TwinStars™ deliver superior capacity and performance, but they also fit through a standard 36" door, making them the perfect replacement units.

## Unmatched Durability

Commercial laundry equipment is no small expense; I want peace of mind my equipment will last well into the future. What sets Huebsch apart from other brands in terms of reliability?

### Not just standing behind our equipment, but standing beside you and your business.

Our Made-in-America product comes with an industry-leading bond. The entire machine receives Huebsch's standard three-year warranty.



In addition, Huebsch has more service representatives in the field than most brands have in their whole organization. Huebsch support is further bolstered

by an online component and a distribution network that assists customers with their laundry questions.

\*Parts only, labor not included. See Huebsch Warranty Bond for specifics.



# 25-35 lb Tumble Dryers and 30-45 lb Stack Tumble Dryer Specifications

Models	HT025	HT030	HTT30	HT035	HTT45
Control Options	Micro-Display (OM), Dual Digital (QT)	Micro-Display (OM), Dual Digital (QT)	Dual Digital (QT)	Micro-Display (OM), Dual Digital (QT)	Dual Digital (QT)
Dry Weight Capacity - lb (kg)	25 (11.3)	30 (13.6)	2 x 30 (13.6)	35 (15.9)	2 x 45 (20.4)
Width - in (mm)	28" (711)	28" (711)	31 1/2" (800)	31 1/2" (800)	34 1/2" (876)
Depth - in (mm)	40 7/8" (1038)	46 7/8" (1191)	42 3/4" (1086)	46 7/8" (1191)	48 5/8" (1235)
Height - in (mm)	63 7/8" (1622)	63 7/8" (1622)	76 1/4" (1937)	63 7/8" (1622)	81 1/16" (2059)
Cylinder Depth - in (mm)	24" (610)	30" (762)	26" (660)	30" (762)	30" (762)
Cylinder Diameter - in (mm)	26 1/2" (673)	26 1/2" (673)	30" (762)	30" (762)	33" (838)
Cylinder Volume - cu. ft. (liters)	7.7 (217)	9.6 (271)	10.6 (301)	12.3 (347)	14.8 (421)
Door Opening Size - in (mm)	22 11/16" (576)	22 11/16" (576)	22 11/16" (576)	22 11/16" (576)	26 7/8" (683)
Airflow - cfm (liters/sec.)	50 Hz: 430 (203) 60 Hz: 500 (236)	50 Hz: 430 (203) 60 Hz: 500 (236)	50 Hz: 340 (160) 60 Hz: 400 (189)	50 Hz: 550 (260) 60 Hz: 650 (307)	50 Hz: 500 (236) 60 Hz: 600 (283)
Energy Data	Gas Models: 50 Hz: 64,000 Btu/hr (18.8 kW) 60 Hz: 64,000 Btu/hr (18.8 kW) Steam Models: At 100 psi (6.9 bar): 3.9 BHP 135,000 Btu/hr (39.6 kW) Electric Models: 12 kW	Gas Models: 50 Hz: 73,000 Btu/hr (21.4 kW) 60 Hz: 73,000 Btu/hr (21.4 kW) Steam Models: At 100 psi (6.9 bar): 3.9 BHP 135,000 Btu/hr (39.6 kW) Electric Models: 21 kW	Gas Models: 50 Hz: 73,000 Btu/hr (21.4 kW) per pkt 60 Hz: 73,000 Btu/hr (21.4 kW) per pkt Steam Models: At 100 psi (6.9 bar): 3.2 BHP 111,000 Btu/hr (32.5 kW) Electric Models: 21 kW	Gas Models: 50 Hz: 90,000 Btu/hr (26.4 kW) 60 Hz: 90,000 Btu/hr (26.4 kW) Steam Models: At 100 psi (6.9 bar): 3.8 BHP 166,000 Btu/hr (48.6 kW) Electric Models: 24 kW	Gas Models: 50 Hz: 87,000 Btu/hr (25.5 kW) per pkt 60 Hz: 95,000 Btu/hr (27.8 kW) per pkt Steam Models: N/A Electric Models: N/A
Electrical Specifications					
Gas and Steam	Amps:	Amps:	Amps:	Amps:	Amps:
100/200-220/60/1	11.0/5.8	11.0/5.8	22.0/11.6 total	11.0/5.8	N/A
200/60/1	N/A	N/A	N/A	N/A	11.2 total
120/208-240/60/1	12.0/6.7	12.0/6.7	16.0/8.0 total	12.0/6.7	N/A
208-240/60/1	N/A	N/A	N/A	N/A	12.0 total
200-208/240/60/3	3.2/3.2	3.2/3.2	6.4/6.4 total	3.2/3.2	9.6/9.6 total
380/60/3	1.5	1.5	3.0 total	1.5	N/A
460-480/60/3	1.6	1.6	3.3 total	1.6	N/A
100/200/50/1	12.1/7.5	12.1/7.5	24.2/15.0 total	12.1/7.5	N/A
200/50/1	N/A	N/A	N/A	N/A	11.2 total
230-240/50/1	7.5	7.5	15.0 total	7.5	10.8
200/50/3	2.9	2.9	5.8 total	2.9	N/A
230-240/50/3	3.5	3.5	7.0 total	3.5	N/A
380/400-415/50/3	1.5/1.6	1.5/1.6	3.0/3.2 total	1.5/1.6	N/A
Electric*					
208/60/1	64	108	N/A	122	N/A
240/60/1	57	94	N/A	107	N/A
200/60/1	64	108	N/A	122	N/A
200-208/60/3	37	62	124 total	71	N/A
240/60/3	33	54	108 total	62	N/A
380/60/3	20	33	66 total	38	N/A
460-480/60/3	16	27	54 total	31	N/A
200/50/1	63	105	N/A	119	N/A
230-240/50/1	58	95	N/A	108	N/A
200/50/3	36	60	120 total	65	N/A
230-240/50/3	33	55	110 total	62	N/A
380/50/3	20	33	66 total	38	N/A
400-415/50/3	18	31	62 total	35	N/A
Plumbing Connections - in	Gas Models: 1/2" - NPT Steam Models: 3/4" - NPT	Gas Models: 1/2" - NPT Steam Models: 3/4" - NPT	Gas Models: 1/2" - NPT Steam Models: 3/4" - NPT	Gas Models: 1/2" - NPT Steam Models: 3/4" - NPT	Gas Models: 1/2" - NPT Steam Models: N/A
Shipping Dimensions					
Width	30" (762)	30" (762)	32 1/2" (825)	33" (838)	35 1/2" (902)
Depth	43" (1092)	49" (1245)	47" (1194)	49" (1245)	54" (1372)
Height	69" (1753)	69" (1753)	81" (2057)	69" (1753)	85" (2159)
Net Weight - lb (kg)	299 (135)	331 (150)	544 (247)	361 (164)	673 (305)
Shipping Weight - lb (kg)	332 (151)	364 (165)	582 (264)	394 (179)	718 (326)
Agency Approvals	cCSA <sub>US</sub> , CE, CSA Star, CSA Flame	cCSA <sub>US</sub> , CE, CSA Star, CSA Flame	cCSA <sub>US</sub> , CE, CSA Star, CSA Flame	cCSA <sub>US</sub> , CE, CSA Star, CSA Flame	cCSA <sub>US</sub> , CE, CSA Star, CSA Flame

Tumble dryer models are made to suit a variety of electrical service characteristics. See your Huebsch distributor for specifications. For further details on installation, refer to Installation, Operation and Maintenance instructions supplied with the tumble dryer. USA and Canada models are certified by C.S.A International.

For the most accurate information, the installation guide should be used for all design and construction purposes. Due to continuous product improvements, design and specifications subject to change without notice. The quality management system of Alliance Laundry Systems' Ripon facility has been registered to ISO 9001:2000.

Printed in the U.S.A. ©Copyright 2011 Alliance Laundry Systems LLC

Alliance Laundry Systems, Shepard Street, Ripon, WI 54971 Telephone: 1-800-553-5120



**The Office of the State's Attorney**  
Fall River and Oglala Lakota Counties

James G. Sword

---

906 North River Street, Suite 301 Hot Springs, SD 57747 Phone: (605) 745-3866 Facsimile: (605) 745-3855 [FRCSA@gwtc.net](mailto:FRCSA@gwtc.net)

September 13, 2018

Fall River County Commission  
906 N. River St.  
Hot Springs, SD 57747

Re: BNSF highway blocking and injection well hearing

Commissioners:

I had a chance to speak to an individual with BNSF about the trains blocking highways. From my conversation with this individual I discovered that the best way to go about resolving this issue is to get as many details as possible surrounding the blocking of the roads so that they can make a determination as to which crews, etc. were involved and contact the relevant people on the ground to resolve this problem. The BNSF representative informed me that they do not like to hear that their crews are blocking roads and will work to prevent this from happening as much as possible in the future, but that they need the details in order to know how to gather information on their end. If the Sheriff or some other individual can put together a short report with dates, approximate times and locations of the problem I will be able to forward this information to the relevant parties with BNSF so that we can get a better answer to why this is happening, and what actions they intend to take to resolve this issue.

Also, although I was of the belief that my discussion of how federal law preempts the proposed county ordinance requiring information as to the blocking by the railroad, I was informed that this question remains on the agenda. To clarify my advice in this regard, the county does not have the authority pass any ordinances regarding this issue as this issue has been completely preempted by federal law.

Regarding the issue with the proposed injection wells in Fall River County. After some further thought, I am of the opinion that the matter involves an area of complicated and specialty law which precludes me from making any more than a guess as to whether Fall River County has a chance at the administrative hearing. These types of legal issues are so specialized that it would be better to find an expert to discuss whether the county could effectively oppose this proposed injection well. My guess would be that the county would need a geologist familiar with injection wells and the topography and ground formations within the county to try to determine possible problems which could arise from allowing this within the county, and a consultation with an attorney with experience in these types of legal matters as these things rise or fall based upon the

science. I cannot advise as to whether the South Dakota board which will make the decision tends to be biased one way or the other, although my guess will be that industry gets the upper hand generally within state government.

None of this precludes any private landowners from going to the hearing and participating, unless the agency or board has a rule to the contrary. It would seem odd that a private citizen would not be allowed to present their input without an attorney, as that would seem to potentially be a due process violation. In any event, I hope that this answers your questions regarding these issues. Please let me know if you have further questions.

Sincerely,

A handwritten signature in black ink, appearing to read 'Brian T. Ahrendt', with a long horizontal stroke extending to the right.

Brian T. Ahrendt  
Deputy States Attorney

**APPLICATION FOR PERMIT TO OCCUPY COUNTY HIGHWAY RIGHT-OF-WAY**

TO: THE BOARD OF COUNTY COMMISSIONERS

DATE: 9/14/2018

FALL RIVER COUNTY,  
HOT SPRINGS, SOUTH DAKOTA

Application is hereby made by Golden West Telecommunications, South Dakota for permit to occupy highway right-of-way located from: Rocky Ford Road from intersection with Old Highway 18

To: driveway at 12156 Rocky Ford Road

AERIAL FACILITIES: Location, type and size of the proposed line and anchors with respect to the centerline of the road or outer edge of the right-of-way and location of crossings showing any right-of-way are shown on Exhibit "A" (Sketch) attached.

UNDERGROUND FACILITIES: A sketch showing the approximate route and location of the proposed facility for which a permit is hereby requested is attached as Exhibit "A" and made a part hereof.

The following information is pertinent to the proposed installation:

1. Intended usage or rating: To upgrade area to fiber optic telecommunications facilities.
2. Pipe size, cable size and type: BFO 12, BFO 24, BFO 96; HDPE Innerduct
3. Outside diameter: BFO 12 & 24 - 0.56"; BFO 96 - 0.63"; Innerduct - 1.660"
4. Maximum pressure at which pipeline will be operated: N/A
5. Size and Type of metal casing: N/A
6. Minimum depth of cable or pipeline: 36"
7. Casing will be installed by minimum size boring and will extend from toe of in-slope to toe of in-slope.
8. This installation will comply with the most recently adopted ASA, Code for Gas Transmission and Distribution Pipe systems or the National Safety Code. Marker sign(s) will be installed where appropriate.

The installation and maintenance of said utility facilities will not interfere with or impair construction, maintenance or use of any highway and will comply with all safety regulations of the State and Federal Government. When trenching is done on County R.O.W. the trenches must be tamped to avoid any settlement.

Future adjustments and maintenance will be in accordance with State and Federal Laws and Regulations and will be performed at no cost to the County or the Federal Government.

APPROVED \_\_\_\_\_ 20\_\_

SUBMITTED 14-Sep \_\_\_\_\_ 20\_\_ 18

\_\_\_\_\_  
County Chairman

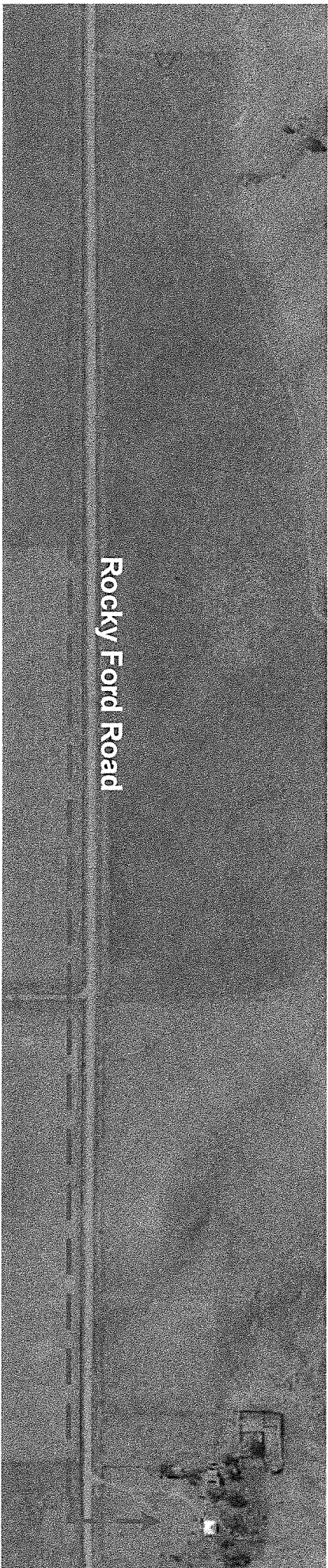
\_\_\_\_\_  
Golden West Telecommunications

By  Mickie Abell

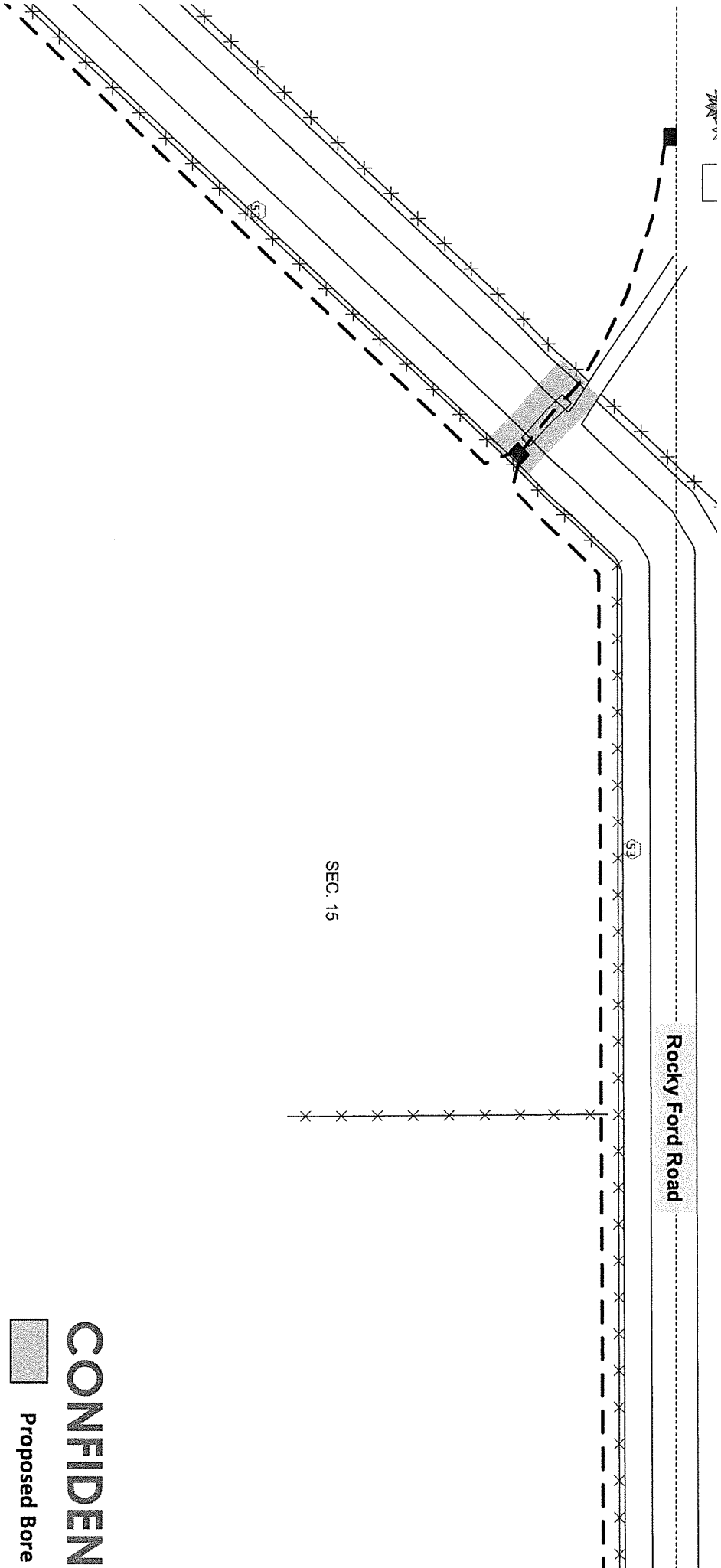
\_\_\_\_\_  
County Auditor

\_\_\_\_\_  
ROW Technician

\_\_\_\_\_  
Title



Rocky Ford Road



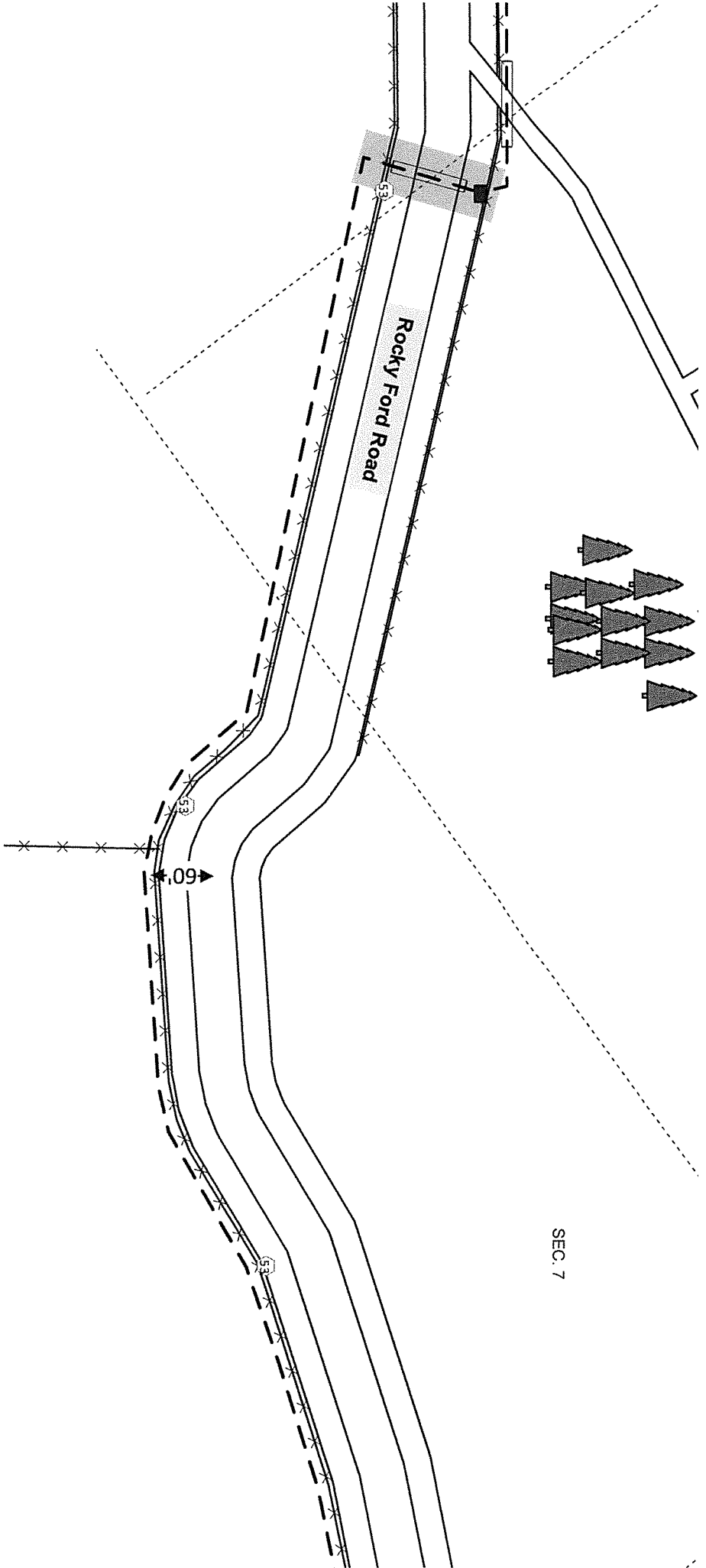
**CONFIDEN**

Proposed Bore

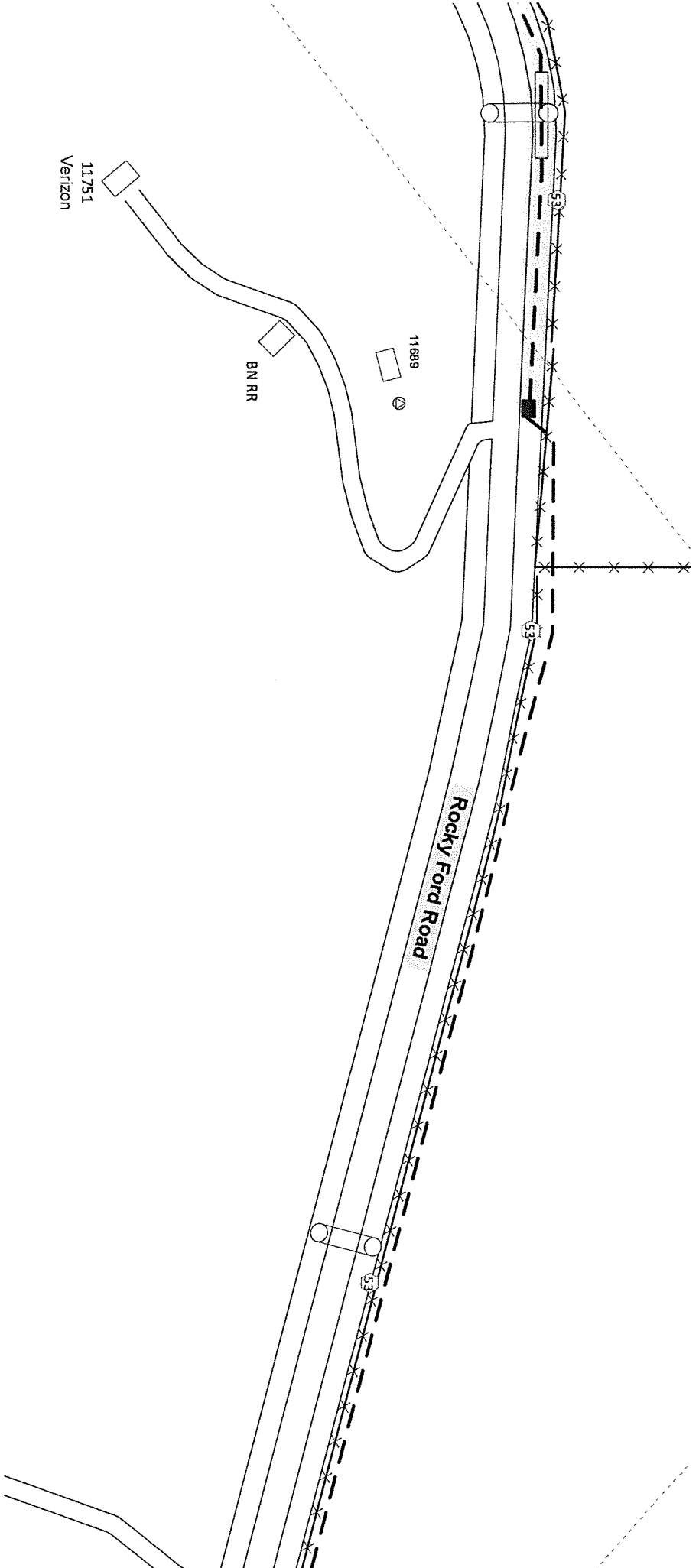
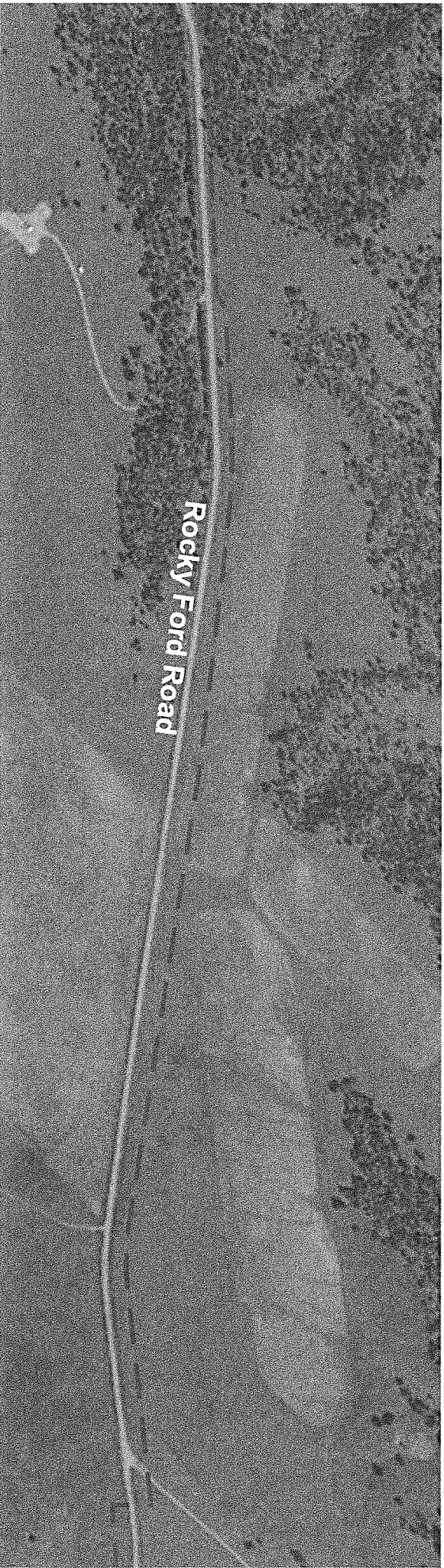
State: South Dakota  
County: Fall River  
Range: 4E  
Twp: 9S













Rocky Ford Road

11611

11623

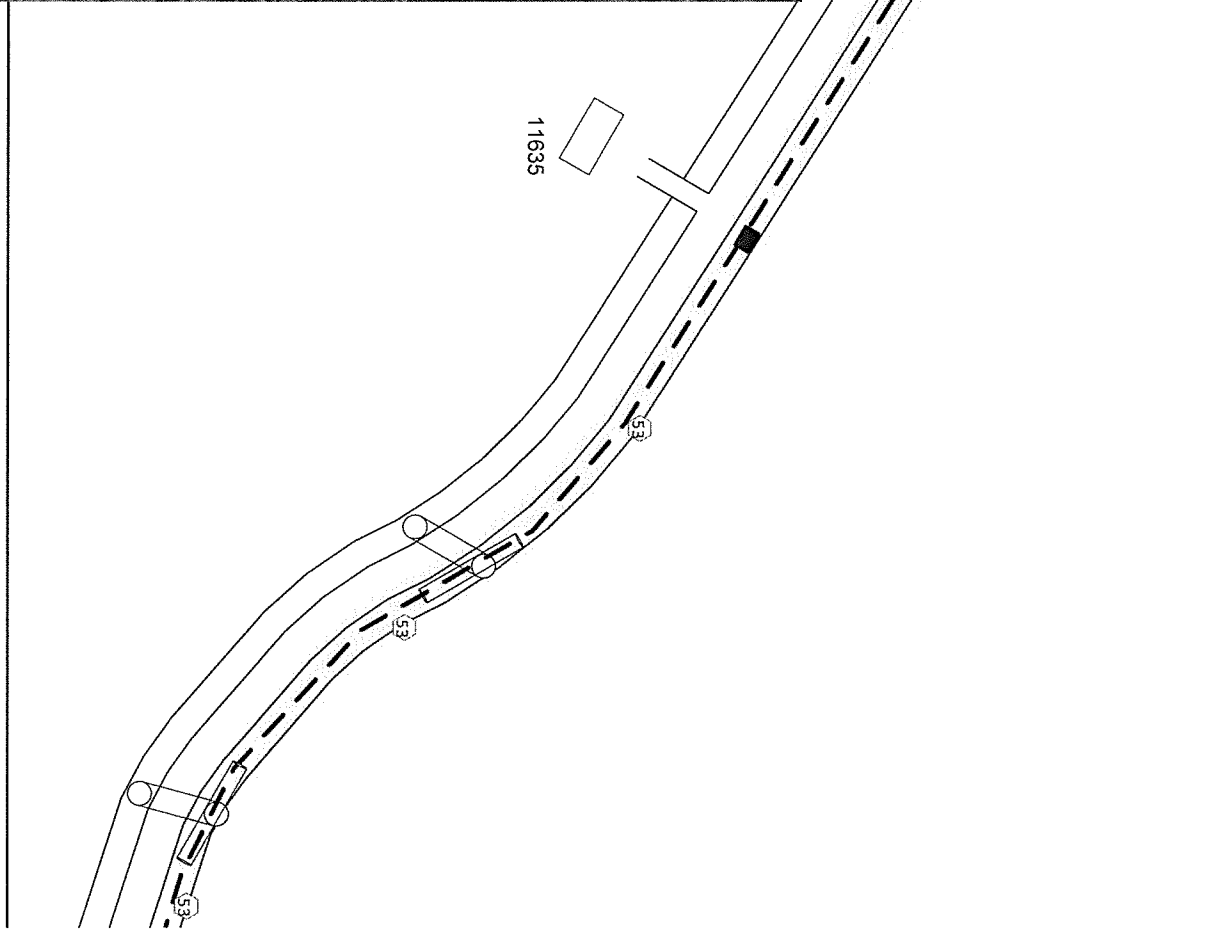
11635

53

53

53

53



## [EXT] Hwy Road Permit Application

Mickie Abell <MickieAbell@GoldenWest.com>

Fri 9/14/2018 9:05 AM

To:Ganje, Sue <Sue.Ganje@state.sd.us>;

 2 attachments

T18251 -Rocky Ford Rd - Staking.pdf; T18251 - Rocky Ford Rd - Permit Application.pdf;

Hi Sue,

Attached is a permit application and staking sheets for a project we hope to get in yet this year along Rocky Ford Road. We are hoping to put the majority of it in the private right-of-way. However, if we have difficulty getting easement, we may need to move more of it into the road right-of-way. If you have any questions, concerns or need any additional information, please let me know.

Thank you!  
Mickie

*Mickie Abell, RWP*

*ROW Technician*

*Golden West Telecommunications*

*Direct: 605-279-1542*

*Cell: 605-685-3049*

*Fax: 605-279-2797*

*Email: [mickieabell@goldenwest.com](mailto:mickieabell@goldenwest.com)*

