

Taxable Value by Class (total and percentage of county total)

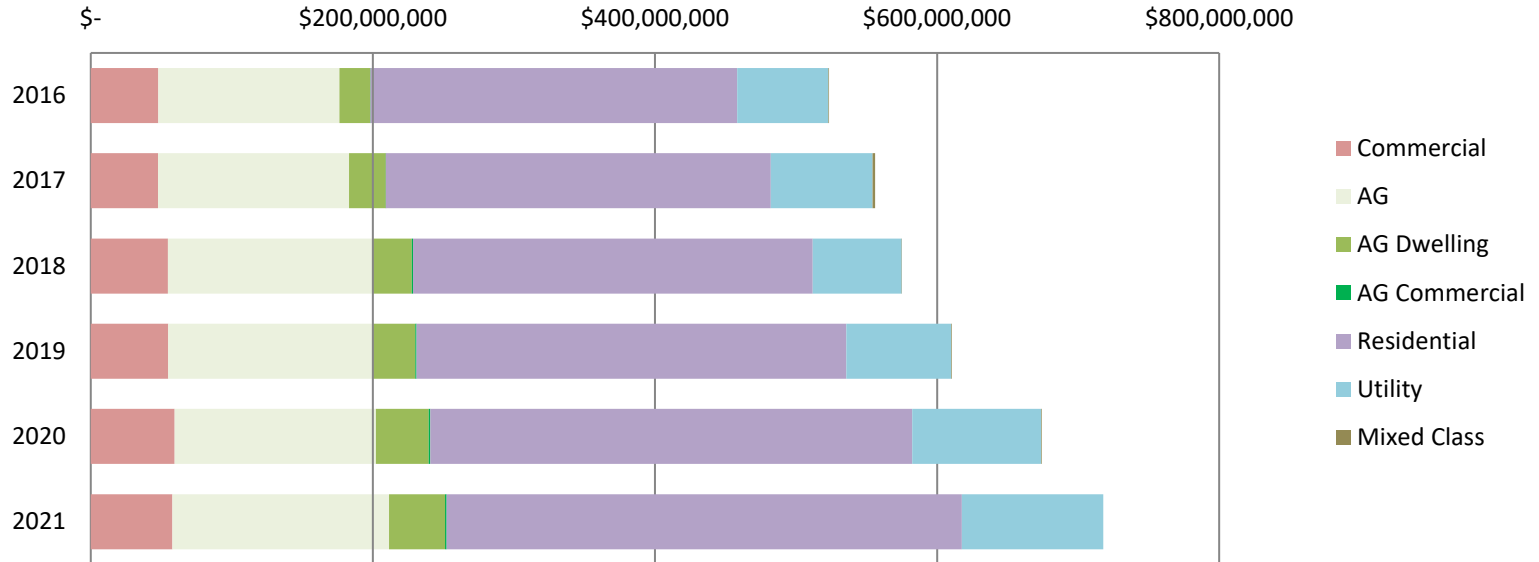
YEAR	AG	AG Dwelling	AG Commercial	Residential	Commercial	Utility	Mixed Class	Total
2010	\$ 89,629,505 21.7%	\$ 14,069,810 3.4%	\$ 71,400 0.0%	\$ 210,523,420 50.9%	\$ 47,846,915 11.6%	\$ 51,511,459 12.5%	\$ - 0.0%	\$ 413,652,509
2018	\$ 144,730,140 25.2%	\$ 28,125,610 4.9%	\$ 909,330 0.2%	\$ 283,271,420 49.2%	\$ 54,692,810 9.5%	\$ 63,221,121 11.0%	\$ 287,760 0.1%	\$ 575,238,191
2019	\$ 145,401,170 23.8%	\$ 29,833,470 4.9%	\$ 915,730 0.2%	\$ 304,605,870 49.9%	\$ 54,825,180 9.0%	\$ 74,449,551 12.2%	\$ 438,890 0.1%	\$ 610,469,861
2020	\$ 142,763,610 21.2%	\$ 37,498,320 5.6%	\$ 1,007,660 0.1%	\$ 341,763,700 50.7%	\$ 59,445,950 8.8%	\$ 91,243,056 13.5%	\$ 481,340 0.1%	\$ 674,203,636
2021	\$ 153,583,020 21.4%	\$ 39,626,530 5.5%	\$ 1,283,030 0.2%	\$ 365,153,130 50.9%	\$ 57,877,630 8.1%	\$ 100,259,430 14.0%	\$ - 0.0%	\$ 717,782,770

Taxes by Class (total and percentage of county total)

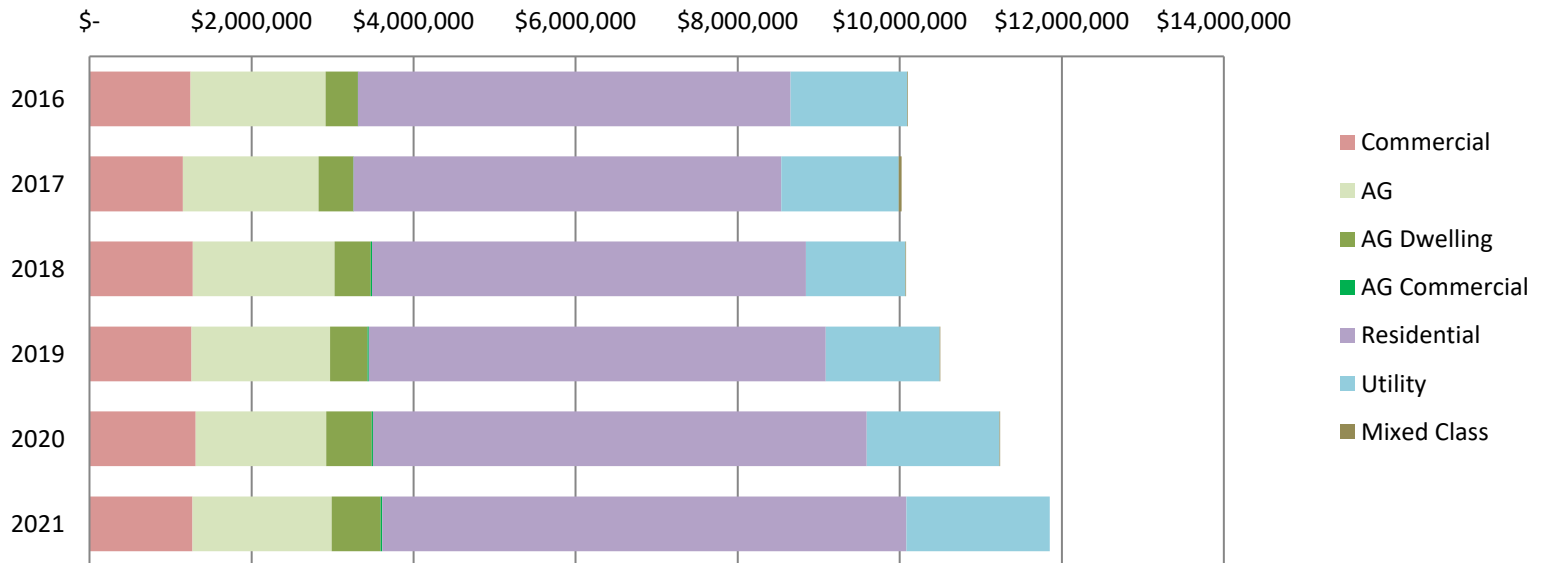
YEAR	AG	AG Dwelling	AG Commercial	Residential	Commercial	Utility	Mixed Class	Total
2010	\$ 1,325,127 15.3%	\$ 261,161 3.0%	\$ 1,497 0.0%	\$ 4,509,581 52.1%	\$ 1,363,286 15.8%	\$ 1,187,732 13.7%	\$ - 0.0%	\$ 8,648,383
2018	\$ 1,750,205 17.4%	\$ 448,081 4.4%	\$ 16,008 0.2%	\$ 5,354,265 53.1%	\$ 1,273,272 12.6%	\$ 1,229,418 12.2%	\$ 8,265 0.1%	\$ 10,079,514
2019	\$ 1,710,355 16.3%	\$ 460,936 4.4%	\$ 15,835 0.2%	\$ 5,639,901 53.7%	\$ 1,259,511 12.0%	\$ 1,404,653 13.4%	\$ 10,793 0.1%	\$ 10,501,984
2020	\$ 1,611,880 14.3%	\$ 561,367 5.0%	\$ 16,848 0.1%	\$ 6,093,665 54.2%	\$ 1,309,674 11.7%	\$ 1,637,658 14.6%	\$ 9,732 0.1%	\$ 11,240,824
2021	\$ 1,718,850 14.5%	\$ 601,985 5.1%	\$ 21,157 0.2%	\$ 6,470,058 54.6%	\$ 1,271,503 10.7%	\$ 1,769,851 14.9%	\$ - 0.0%	\$ 11,853,403

\*Year listed is the year taxes were due

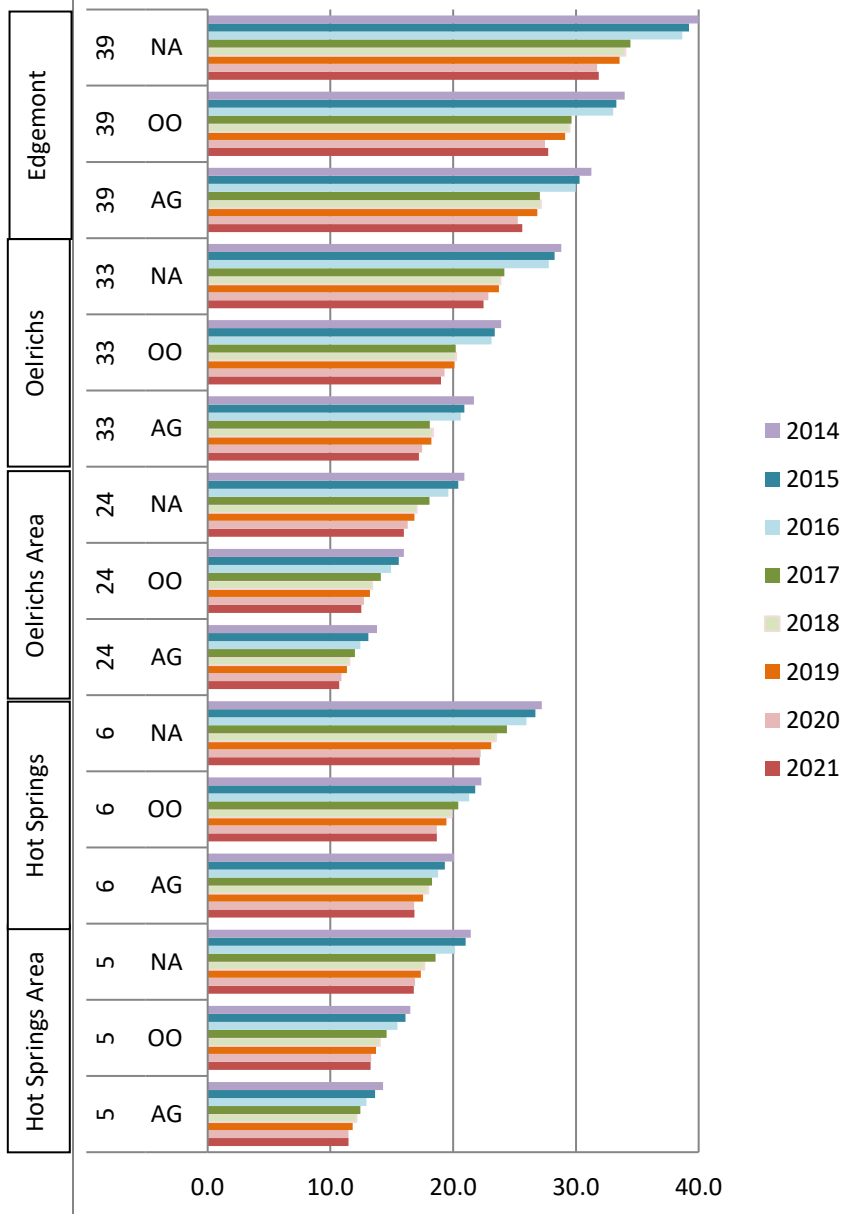
## Taxable Value - Fall River County



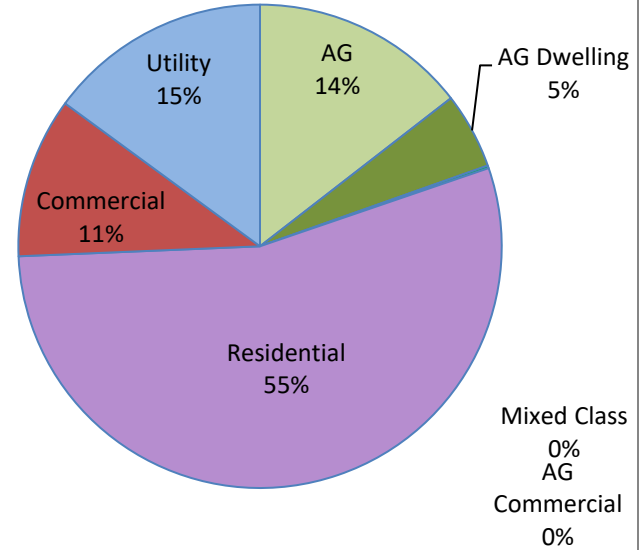
## Taxes - Fall River County



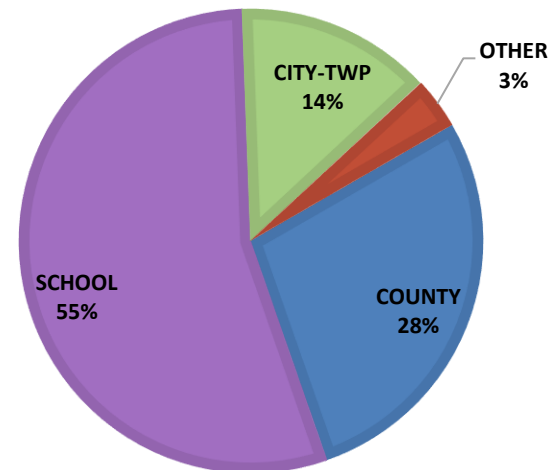
## Mill Levies by Tax District, Class and Year



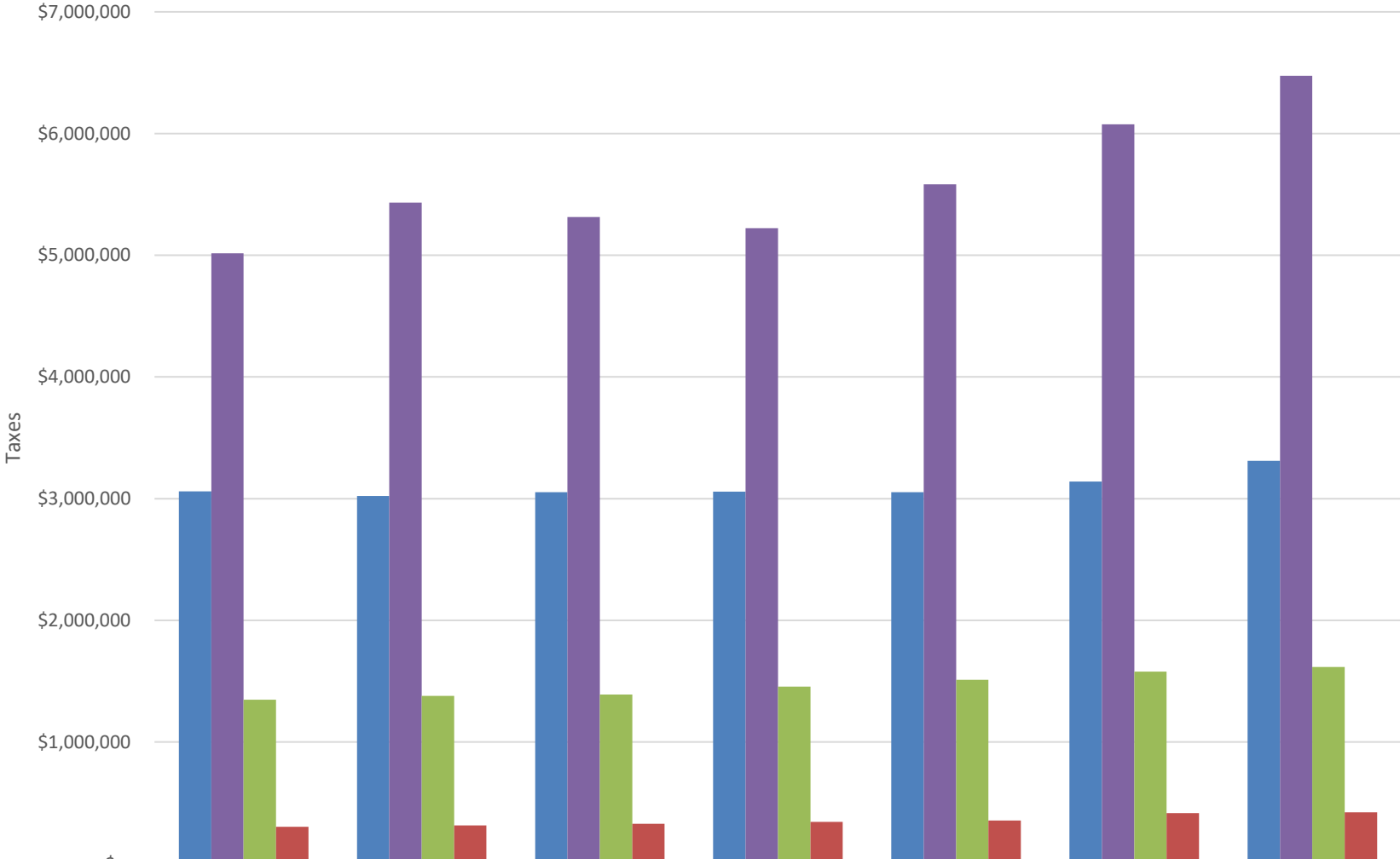
## Taxes (payable) 2021



## TAX DISTRIBUTION 2021



### Distribution of Taxes 2015-2021



	2015	2016	2017	2018	2019	2020	2021
COUNTY	\$3,058,848	\$3,020,753	\$3,052,538	\$3,058,393	\$3,052,897	\$3,140,810	\$3,310,181
SCHOOL	\$5,016,590	\$5,432,686	\$5,313,165	\$5,222,207	\$5,583,453	\$6,076,186	\$6,473,830
CITY-TWP	\$1,347,700	\$1,378,563	\$1,391,344	\$1,454,925	\$1,510,500	\$1,578,379	\$1,616,850
OTHER	\$302,851	\$314,573	\$327,700	\$343,989	\$355,134	\$415,061	\$423,372

The 'Other' category includes entities such as: road districts, fire departments, and library.