

## Fall River Solar

The haul road is located 2 miles south of the Hwy 18/79/385 intersection at Oelrichs SD. The haul road is called Antelope Rd or Fall River County 4A. The length is 4.7 miles total. From Hwy 385, head west on Antelope Rd to reach the Fall River Solar site.

### Road assessment.

Road is 4.7 miles long. All notes consider the intersection of Antelope and Hwy 385 to be the start of all measuring.

The road is crowned in the middle allowing water to flow both direction off of the road. Approximately, 50% of the road has a lite washboard, with a few spots being slightly more significant. These area would be the areas approaching both stop signs and the small dog leg at the 2 mile mark.

The road becomes quite slick when it rains and even with minimal traffic clearly shows potential to need moderate maintenance

All measures will be taken headed west, left, center, then right.

0.3 miles. 2in. 4in. 2in. 20ft wide  
0.6 miles. 2in. 4in. 2in. 20ft wide  
1.0 miles. 4in. 6in. 4in. 20 ft wide  
1.3 miles. 4in. 6in. 4in. 20 ft wide  
1.6 miles. 3in. 6in. 4in. 20 ft wide  
2.0 miles. 4in. 6in. 4in. 20ft wide  
2.3 miles. 4in. 6in. 3in. 20ft wide  
2.6 miles. 4in. 5in. 4in. 20ft wide  
3.0 miles. 4in. 6in. 4in. 20ft wide  
3.3 miles. 4in. 6in. 4in. 20ft wide  
3.6 miles. 5in. 6in. 4in. 20ft wide

At 3.6 miles Antelope Lane intersects with Hard Scrabble Rd. Antelope Lane becomes a Class B maintained road from the intersection to the entrance of the site.

4.0 miles. 4in. 6in. 4in. 18ft wide  
4.3 miles. 2in. 5in. 3in. 18ft wide  
4.6 miles. 2in. 4in. 2in. 18ft wide

## CLOSED TRANSACTION: FALL RIVER SOLAR

Fall River County, South Dakota



Greenbacker  
RENEWABLE ENERGY COMPANY™

### PROJECT OVERVIEW

Fall River Solar, is located in Fall River County, South Dakota and has a 20-year Power Purchase Agreement (PPA) in place with the investment-grade utility Black Hills Power, Inc. (BHP). Greenbacker will oversee the construction which is expected to reach COD in Q4 2022.

DETAILS & IMACT	
Megawatt Capacity	80 MWac
Solar PV System Type	Single Axis Tracking
Construction Status	Notice to Proceed
Megawatt Hours of Energy Provided for One Year <sup>1</sup>	191, 504 MWh
Homes Powered per Hour <sup>2</sup>	15.200
Green Jobs Provided <sup>3</sup>	304
Carbon Abated on an Annual Basis <sup>4</sup>	135,716 Metric Tons
Equivalent to Carbon Sequestered by <sup>4</sup>	166,276 Acres of US Forest in One Year

<sup>1</sup> Megawatt hours are calculated by operating capacity multiplied by hours of generating capacity

<sup>2</sup> One megawatt can power approximately 190 homes per hour

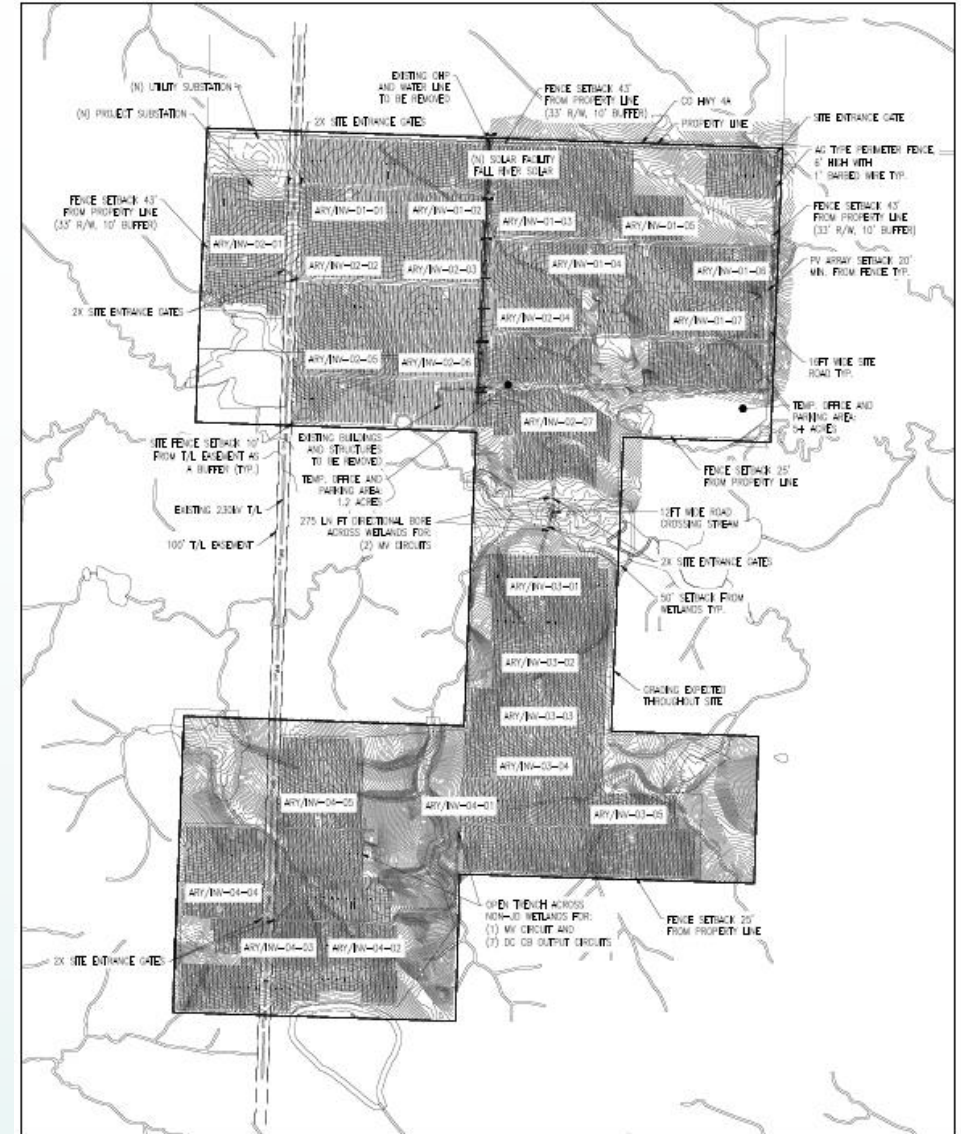
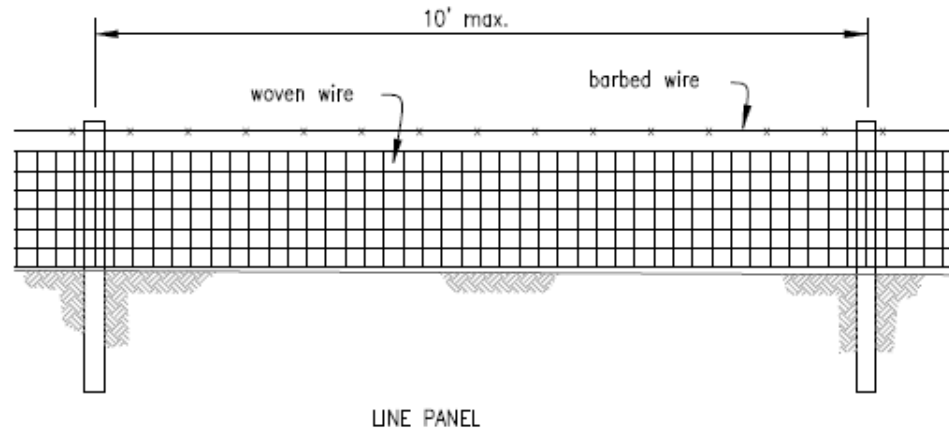
<sup>3</sup> Green jobs are calculated from the [International Renewable Energy Agency's](#) measurement that one megawatt of renewable power supports 3.8 jobs

<sup>4</sup> This calculation provided using the [EPA Greenhouse Equivalencies Calculator](#)

# CLOSED TRANSACTION: FALL RIVER SOLAR

Fall River County, South Dakota

## FENCING DETAIL



## SITE PLAN