

**FALL RIVER COUNTY UNAPPROVED MINUTES OF MARCH 6, 2025**

The Fall River Board of County Commissioners met in regular session on March 6, 2025. Present: Joe Allen, Joe Falkenburg, Deb Russell, Sandra Wahlert and Sue Ganje, Auditor. Les Cope was absent.

A prayer was given by Wahlert.

The Pledge of Allegiance was given, and the meeting was called to order at 9:00 a.m.

The agenda was reviewed for conflicts; none were noted. ALL MOTIONS RECORDED IN THESE MINUTES WERE PASSED BY UNANIMOUS VOTE, UNLESS OTHERWISE STATED. The full context of the meeting can be found on the county website under Commissioners at <http://fallriver.sdcounties.org>, or on Facebook, on the Fall River County's website.

Motion made by Allen, seconded by Wahlert, to approve the agenda with the addition of a Quote for a laptop computer from Golden West Technologies for the Highway Department Superintendent in the amount of \$939.50.

Les Cope entered the meeting at 9:02 a.m.

Motion made by Russell, seconded by Wahlert, to approve the meeting minutes from February 20, 2025.

Motion made by Russell, seconded by Wahlert, to approve the Auditor's Account with the Treasurer for January, 2025 as follows:

**AUDITOR'S ACCOUNT WITH THE COUNTY TREASURER**

TO THE HONORABLE BOARD OF FALL RIVER COUNTY COMMISSIONERS:  
I hereby submit the following report of my examination of the cash and cash items in the hands of the County Treasurer of this County on this 31st day of January 2025.

<b>Total Amount of Deposit in First Interstate Bank, HS:</b>	\$	1,757,605.49
<b>Total Amount of Cash:</b>	\$	1,804.07
<b>Total Amount of Treasurer's Change Fund:</b>	\$	900.00
<b>Total Amount of Checks in Treasurer's Possession Not Exceeding Three Days:</b>	\$	37,554.15
<b>SAVINGS:</b>		
#4) First Interstate Bank, HS:	\$	1,464,964.26
<b>CERTIFICATES OF DEPOSIT:</b>		
#14) Schwab Treasury:	\$	8,784,455.17

**Itemized list of all items, checks and drafts that have been in the Treasurer's possession over three days:**

Register of Deeds Change Fund:	\$	500.00
Highway Petty Cash:	\$	20.00
Election Petty Cash:	\$	15.00

**RETURNED CHECKS:**

Hannah Thomas	\$	426.01
Suter, Debbie                      Stop payment	\$	729.45

**TOTAL    \$ 12,048,973.60**

Dated This 31st Day of January 2025.

/S/ Sue Ganje

Sue Ganje, County Auditor of  
of Fall River County

/S/ Teresa Pullen

Teresa Pullen, County  
Treasurer  
of Fall River County

County Monies	\$	11,564,724.46
Held for other Entities	\$	270,227.12
Held in Trust	\$	214,022.02
<b>TOTAL</b>	<b>\$</b>	<b>12,048,973.60</b>

The Above Balance Reflects County Monies, Monies Held in Trust, and Monies Collected for and to be remitted to Other ENTITIES: SCHOOLS, TOWNS AND STATE.

Motion made by Wahlert, seconded by Russell, to approve the Wage increase for Chrissy Porter, Extension Administrative Assistant from \$17.25/hr to \$18.50/hr plus \$25.00/month longevity, effective 04/03/2025, per Union Contract.

Motion made by Russell, seconded by Wahlert, to set the Consolidated Board of Equalization dates and times for 04/17/2025 after the regular meeting is adjourned and then again on 04/18/2025 at 9:00 a.m. if necessary.

CP2025-03 was presented for the Board's consideration.

Motion made by Russell, seconded by Allen, to approve paying CP2025-03 in the amount of \$1,601.52 to Chamberlain/McColley's Funeral Home for the balance of funeral services not covered by the decedent. With Wahlert voting no, all others voting yes, motion carried.

Dar Coy, Emergency Manager, met with the Board.

Motion made by Russell, seconded by Wahlert, to approve the quote and authorize the payment of \$1,387.48 to Computer Repair with Therapy for a Galaxy S10 Tablet, protective case, set up and configuration.

Coy then provided updates and reported on incidents.

Lyle Norton, Sheriff, met with the Board.

Motion made by Allen, seconded by Wahlert, to approve travel for Deputy Tanner Schiferl to attend the 2025 Narcotics Officer Conference in Deadwood April 30-May 2, 2025, at a cost of \$100.00 for registration, \$107.00/night for 2 nights lodging, plus per diem.

Motion made by Allen, seconded by Russell, to approve travel for Sheriff Lyle Norton to attend the 2025 Sheriffs & Police Chiefs Conference in Deadwood April 15-17, 2025, at a cost of \$135.00 for registration, \$79.00/night for 3 nights lodging, plus per diem.

Discussion continued regarding the purchase of a body scanner for the Fall River County Jail with Opioid Settlement funds. Allen asked Norton which machine and contract he would like to purchase. Norton has one picked out that he feels is the best package deal.

Motion made by Russell, seconded by Allen, to approve the purchase of the body scanner that Norton was recommending, contingent on bidding laws. With Cope voting no, all others voting yes, motion carried.

Norton provided updates and the jail census of 6 males and 5 females in house, with 1 male in Meade County, for a total of 12 inmates. Lastly, Norton informed the Board that the Sheriff's Department were going to have 2 Ford Interceptors delivered. He budgeted \$50,000.00 per vehicle but their price per unit was \$46,866.00 each. Once delivered he will arrange to get the vehicles equipped.

Tony March, Highway Superintendent, met with the Board. He presented fuel quotes: Nelson's Oil & Gas \$3.049/gal for 8,000 gallons of unleaded gasoline; Vollan Oil \$2.777/gal for 8,000 gallons of unleaded Gasoline; no bid from MG Oil; \$2.744/gallon from CBH Co-Op for 8,000 gallons of unleaded gasoline; Stern Co. \$3.0173/gallon for 8,000 gallons of unleaded gasoline; and Hi-D-Way declined to bid.

Motion made by Wahlert, seconded by Russell, to accept the low bid for 8,000 gallons of unleaded gasoline of \$2.774/gallon from CBH Co-Op.

March presented parking lot striping bids from Rapid Striping.

Motion made by Cope, seconded by Allen to accept the bid from Rapid Striping for a total of \$4,055.00 plus marking of handicapped parking spaces.

Motion made by Cope, seconded by Wahlert, to approve increasing Tony March, Highway Superintendent's County credit card limit from \$1,500.00 to \$2,500.00, effective immediately.

Motion made by Russell, seconded by Wahlert, to approve the application for Permit to Occupy County Right-of-Way from Golden West Telecommunications located from an existing vault approximately 950' west of Houseboat Drive to the west side of the power substation compound (crossing Feeder Way Rd).

March requested that the Board receive sealed quotes for the crack sealing in Oelrichs and Oral

Road at the next meeting. He will get quotes and have Brett Blessing, Highway Foreman, bring them to the meeting.

Motion made by Russell, seconded by Allen, to approve the quote from Golden West Technologies and purchase of an HP ProBook 460 G11 16" Notebook with a 1-year warranty to include HP Care Pack next business day hardware support, extended service agreement – parts and labor – 3 years – on-site and Microsoft 365 Apps for business subscription license - 1 user, 12-month subscription, in the amount of \$939.50 for the Highway Department Superintendent.

Dave Weishaupl, Maintenance Supervisor met with the Board to present propane quotes: Hi-D-Way \$1.85/gallon for delivery of 7,000 gallons; McGas Propane \$1.992/gallon for delivery of 7,000 gallons; and Nelson's Oil & Gas no bid.

Motion made by Wahlert, seconded by Allen, to accept the low bid from Hi-D-Way of \$1.85/gallon for 7,000 gallons of propane delivered to the Courthouse tank.

Motion made by Russell, seconded by Allen, to accept the quote from Golden West Technologies for SonicWall TZ570 Trade up with 3-year EPSS that is set to expire May 21, 2025, and authorize purchase in the amount of \$3,476.77.

Weishaupl then presented pictures of the outside cement staircase, showing that the concrete was disintegrating under the metal step plates used for safety. Weishaupl requested the Board's approval to hire an engineer to assess the work that will need to be completed by a mason. After discussion, Wahlert requested that Weishaupl get at least 3 quotes before moving forward with hiring anyone. Allen noted that he believes that an engineer will need to be involved before proceeding. The Deadwood Historical Grant was discussed, and it was noted that Bobbie Janis from the Auditor's office will be working on it.

Motion made by Allen, seconded by Cope to request a quote from an engineer for the assessment and specifications needed for repair.

Joe Allen, Commissioner, will not have any new updates regarding the proposed Jail/Justice Center until after Sheriff Norton talks with Johnson Construction out of Harrisburg, SD at the Annual Sheriff's Conference and they have come to speak with the County.

Deb Russell asked Sheriff Norton to report on the most recent security meeting. They discussed various inexpensive ways to make the facility safer, ie. putting mylar window film on office windows, require employees to wear their ID badges, limiting the entrance points to 1, having the automatic locks have a shorter window before and after office hours, installing "barn" style doors so that the lower half can remain locked but the top half open so the public can see that the office is open.

Motion made by Allen, seconded by Cope, to approve registration and travel for Deb Russell and Sandra Wahlert to attend the South Dakota Association of County Commissioners Spring Workshop April 9-10, 2025 in Pierre.

Nina Steinmetz, Weed and Pest Supervisor, met with the Board to provide a report on progress in 2024 and on the 2025 SD Weed and Pest Conference.

Andersen Engineers met with the Board to present a plat.

Motion made by Russell, seconded by Wahlert, to approve the following plat and resolution:

**FALL RIVER COUNTY RESOLUTION #2025-09**

**A plat of Garrett Tract, located in the SW1/4SW1/4 of Section 22 and the SE1/4SAE1/4 of Section 21, T10S, R4E, BHM, Fall River County, South Dakota**

WHEREAS, there has been presented to the County Commissioners of Fall River County, South Dakota, the within plat of the above described lands, and it appearing to this Board that the system of streets conforms to the system of streets of existing plats and section lines of the county; adequate provision is made for access to adjacent unplatted lands by public dedication or section line when physically accessible; all provisions of the county subdivision regulations have been complied with; all taxes and special assessments upon the property have been fully paid; and the plat and survey have been lawfully executed; now and therefore,

BE IT RESOLVED that said plat is hereby approved in all respects.

Dated this 6<sup>th</sup> day of March, 2025.

/S/ Joe Falkenburg \_\_\_\_\_  
 Joe Falkenburg, Chairman  
 Fall River County Board of Commissioners

ATTEST:

/S/ Sue Ganje \_\_\_\_\_  
 Sue Ganje, Auditor  
 Fall River County Auditor

Motion made by Allen, seconded by Wahlert, to approve payment of the bills as follows:

<b>GENERAL FUND</b>		
ALPHA ROAD BODY SHOP	REPAIR/MAINTENANCE	\$6,230.96
AUDRA HILL CONSULTING, INC	MI/CONSULTING	\$345.02
BAUERKEMPERS INC	REPAIR/MAINTENANCE	\$166.45
BLACK HILLS CHEMICAL	SUPPLY	\$149.56
BILBRUCK, TYLER	BLOOD DRAW	\$225.00
BLACK HILLS ENERGY	UTILITY/ELECTRIC	\$3,515.62
BOMGAARS	SUPPLY	\$89.98
CENTURY BUSINESS LEASING	COPIER LEASE AND USA	\$1,144.59
CHADRON MOTOR CO. INC	REPAIR/MAINTENANCE	\$506.49
CHEYENNE SANITATION	SANITATION COLLECTION	\$379.50
CHILDREN'S HOME SOCIETY	SERVICES	\$750.00
CULLIGAN SOFT WATER	RENTAL/SUPPLY	\$223.50
EDGEMONT YMCA	2025 BUDGET ALLOTMENT	\$4,000.00
EN-TECH LLC	FUMIGATION	\$450.00
FALL RIVER COUNTY HERALD	PUBLICATION	\$1,066.99
JUROR	VOID/JURY DUTY	-\$11.34
GALLS	UNIFORMS/SHERIFF SUP	\$115.14
GALLS	UNIFORMS/SHERIFF SUP	\$723.78
GOLDEN WEST TECHNOLOGIES	INTERNET SERVICES	\$6,883.60
GRAFIX SHOPPE	MAINTENANCE/REPAIR	\$320.00
H & R BLOCK	SUPPLY	\$1,180.00
HEALTHCARE SERVICES INC	INMATE MEALS	\$19,296.00

HOT SPRINGS ACE HARDWARE	SUPPLY	\$243.19
CITY OF HOT SPRINGS	CITY WATER BILL	\$795.68
CITY OF HOT SPRINGS	4TH QTR FIRE SPRINKLER	\$24.00
IDEMIA IDENTITY&SECURITY	SOFTWARE MAINTENANCE	\$2,536.00
JOHNSON, CAROL	COURT REPORTER	\$837.00
JOHNSON, CAROL	VOID/REISSUED AMENDED	-\$137.20
KIRK FUNERAL HOME	BURIAL ASSISTANCE	\$2,150.00
LIGHTING MAINTENANCE CO.	SUPPLY	\$199.08
LYNN'S DAK. MART PHARMACY	INMATE PHARMACY	\$200.76
MARTY'S TIRE & AUTO BODY	SERVICE	\$924.00
MASTEL, BRUCE	DATABASE SETUP & MON	\$35.00
MAVERICK TIRE & AUTO	REPAIR/MAINTENANCE	\$316.96
MEADE COUNTY AUDITOR	INMATE HOUSING	\$2,945.00
MICROFILM IMAGING SYSTEMS	SCANNING EQUIP LEASE	\$90.00
MIDWEST MENTAL HEALTH SD	VOID/LOST CHECK REIS	-\$375.00
MONUMENT HEALTH	AUTOPSY	\$500.00
NEWVISION SECURITY LLC	VOID/OVERPAYMENT/REIMB	-\$899.97
NORTON,TINA	CONTRACT NURSE INMATE	\$1,575.00
ONSITE FIRST AID, LLC	FIRST AID SUPPLIES	\$144.40
PENNINGTON COUNTY JAIL	TRANSPORTATION	\$523.42
US POSTAL SERVICE	SUPPLY	\$365.00
REGISTER OF DEEDS	QUITCLAIM	\$30.00
SDACC	CATASTROPHIC LEGAL	\$4,256.00
SD SHERIFF'S ASSOCIATION	VOID/REISSUED CHECK	-\$190.00
SERVALL	RUG SERVICE	\$458.58
SERVALL	RUG SERVICE	\$458.58
SOFTWARE SERVICES INC	SOFTWARE SERVICES	\$3,200.00
STEVENS, MIKAYLA	BLOOD DRAW	\$75.00
STURDEVANT'S AUTO VALUE	PARTS/SUPPLY	\$328.95
VERIZON WIRELESS	CELL PHONE PLAN	\$886.11
THOMSON REUTERS	SUBSCRIPTION	\$270.37
FEES, IRMA	BLOOD DRAW	\$600.00
PALASKI, DARLENE D	VOID/WRONG VENDOR	-\$20.00
FUGIER, SHANE	VOID/W&P REIMBURSEMENT	-\$134.25
MILES, SASHA	BLOOD DRAW	\$450.00
JUROR	VOID/JURY DUTY	-\$53.93
MCCLENDON, LISA	LOST CHECK REIMBURSENT	\$11.50
COMMISSION	WAGES & BENEFITS	\$5,377.69
AUDITOR	WAGES & BENEFITS	\$29,681.65
TREASURER	WAGES & BENEFITS	\$25,833.94
ST ATTY	WAGES & BENEFITS	\$24,905.74
MAINTENANC	WAGES & BENEFITS	\$14,302.23
ASSESSOR	WAGES & BENEFITS	\$28,887.49
REG/DEEDS	WAGES & BENEFITS	\$17,044.57
VET'S	WAGES & BENEFITS	\$5,483.64

GIS	WAGES & BENEFITS	\$6,114.79
SHERIFF	WAGES & BENEFITS	\$66,575.27
JAIL	WAGES & BENEFITS	\$37,323.10
CORONER	WAGES & BENEFITS	\$333.67
EXTENSION	WAGES & BENEFITS	\$3,618.62
WEED	WAGES & BENEFITS	\$6,849.21
	<b>TOTAL FOR GENERAL FUND</b>	<b>\$343,701.68</b>
<b>COUNTY ROAD &amp; BRIDGE</b>		
BEST WESTERN RAMKOTA INN	VOID/DOUBLE PAYMENT	-\$224.00
BLACK HILLS ENERGY	UTILITY/ELECTRIC	\$1,077.54
BOMGAARS	SUPPLY	\$784.44
BUTLER MACHINERY CO.	REPAIR/MAINTENANCE	\$95.59
CHEYENNE SANITATION	SANITATION COLLECTION	\$79.00
CITY OF EDMONT	CITY OF EDMONT WATER	\$174.80
FLOYD'S TRUCK CENTER	REPAIRS/PARTS	\$31.19
FALL RIVER AUTO SUPPLY	AUTO PARTS/REPAIR	\$65.75
FORWARD DISTRIBUTING	SUPPLIES/PARTS	\$36.35
FALL RIVER COUNTY HERALD	PUBLICATION	\$83.84
FR WATER USERS DISTRICT	UTILITY	\$68.40
GLASS PRO +	REPAIR/MAINTENANCE	\$810.00
GODFREY BRAKE SERVICE	REPAIR/MAINTENANCE	\$11,298.27
GOLDEN WEST TECHNOLOGIES	INTERNET SERVICES	\$8.50
GREAT WESTERN TIRE	REPAIR/MAINTENANCE	\$275.00
GRIMM'S PUMP SERVICE INC	REPAIR/MAINTENANCE	\$254.47
SIMON MATERIALS	GRAVEL	\$21,349.23
HOT SPRINGS ACE HARDWARE	SUPPLY	\$151.21
CITY OF HOT SPRINGS	CITY WATER BILL	\$24.76
RDO EQUIPMENT CO	SUPPLY	\$322.48
RDO EQUIPMENT CO	PARTS	\$116.92
SDACHS	SHORTCOURSE 25 REGIST	\$150.00
STURDEVANT'S AUTO VALUE	PARTS/SUPPLY	\$1,337.23
VERIZON WIRELESS	CELL PHONE PLAN	\$42.74
CRBR ADMIN	WAGES & BENEFITS	\$12,171.76
CRBR HWY	WAGES & BENEFITS	\$63,333.46
	<b>TOTAL FOR COUNTY ROAD &amp; BRIDGE</b>	<b>\$113,918.93</b>
<b>911 SURCHARGE REIMBURSEMENT</b>		
CENTURY BUSINESS LEASING	COPIER LEASE AND USA	\$55.43
RUSHMORE COMMUNICATIONS	UPS BATTERY BACKUP	\$262,411.36
SIMUNEK, TRINA	REIMBURSEMENT	\$296.82
VERIZON WIRELESS	CELL PHONE PLAN	\$42.74
DISPATCH	WAGES & BENEFITS	\$32,683.97
	<b>TOTAL FOR 911 SURCHARGE REIMBURSEMENT</b>	<b>\$295,490.32</b>
<b>EMERGENCY MANAGEMENT</b>		

BAUERKEMPERS INC	REPAIR/MAINTENANCE	\$128.69
FALL RIVER AUTO SUPPLY	SUPPLY/PARTS	\$217.26
GOLDEN WEST TECHNOLOGIES	INTERNET SERVICES	\$17.00
ONSOLVE, LLC	CODE RED RENEWAL 202	\$3,624.64
RUSHMORE COMMUNICATIONS	UPS BATTERY BACKUP	\$328.25
VERIZON WIRELESS	CELL PHONE PLAN	\$127.40
F.R.EMERG.	WAGES & BENEFITS	\$7,312.01
	<b>TOTAL FOR EMERGENCY MANAGEMENT</b>	<b>\$11,755.25</b>
<b>24/7 SOBRIETY FUND</b>		
SHERIFF	WAGES & BENEFITS	\$2,389.83
	<b>TOTAL FOR 24/7 SOBRIETY FUND</b>	<b>\$2,389.83</b>
<b>M &amp; P RELIEF FUND</b>		
GOLDEN WEST TECHNOLOGIES	INTERNET SERVICES	\$2,682.00
TRITECH SOFTWARE SYSTEMS	SOFTWARE MAINTENANCE	\$5,467.00
	<b>TOTAL FOR M &amp; P RELIEF FUND</b>	<b>\$8,149.00</b>
<b>COURTHOUSE BUILDING FUND</b>		
HOT SPRINGS ACE HARDWARE	SUPPLY	\$25.05
RAPID FIRE PROTECTION INC	MAINTENANCE/REPAIR	\$14,765.79
	<b>TOTAL FOR COURTHOUSE BUILDING FUND</b>	<b>\$14,790.84</b>
	<b>TOTAL FOR BILLS PD BETWEEN 02/21 &amp; 03/06/2025</b>	<b>\$790,195.85</b>

Break was taken at 10:14 a.m. The meeting resumed at 10:21 a.m.

Public comments were heard from Kelsey Peterson from Black Hills Energy. He provided a map of the area where Black Hills Energy will be rebuilding power lines near Oral, both overhead and buried. They will also be cutting and trimming trees in the County Right-of-Way, all of which will be submitting Right-of-Way permits in the future. Joe Falkenburg, Commissioner, spoke regarding a call from an employee of BNSF has indicated that, in August or September, they will not be stopping in Edgemont and all employees based out of Edgemont will have to relocate to Alliance or Gillette. He went on to say that it would be a very bad thing for Edgemont. A lot of people will be affected by it. He also noted that he had spoken to Representative Thune regarding P.I.L.T. monies that the County receives. Thune informed them that there is no guarantee that P.I.L.T. monies will be paid to counties in the future. He said that Fall River County receives approximately \$800,000.00 from it. Don Olstad, County resident, spoke regarding the proposed property tax relief legislation that is happening in Pierre. He stated that, if some sort of legislation isn't passed, some Owner-Occupied landowners will need to sell their property because they can't afford to live here.

Gina Ruggieri and Scott James of Southern Hills Law spoke to the Board regarding the interest in hiring a Public Defender vs. having various attorneys providing Court Appointed services. The Board asked them to submit a proposal for providing those services at the next meeting. The Board discussed potentially advertising for other proposals for this service. It will be brought to the next meeting.

Sue Ganje, Auditor, spoke to the Board regarding credit cards. She just wanted to remind them that anything purchased with a credit card is essentially pre-approved. The Board has no way to deny an item if



purchased with a credit card. It is preferred that accounts be set up with vendors instead of using credit cards.

Motion made by Russell, seconded by Allen, to go into Executive Session for personnel and legal as per SDCL 1-25-2 (1) at 10:44 a.m.

The Board came out of Executive Session at 11:00 a.m., with no action taken. The Chairman of the meeting adjourned at 11:01 a.m.

/s/ Joe Falkenburg  
Joe Falkenburg, Chairman  
Board of Fall River County Commissioners

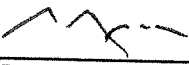
ATTEST:  
/s/ Sue Ganje, Auditor  
Sue Ganje, Auditor  
Fall River County

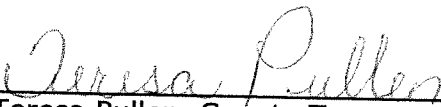
**AUDITOR'S ACCOUNT WITH THE COUNTY TREASURER**

TO THE HONORABLE BOARD OF FALL RIVER COUNTY COMMISSIONERS:  
I hereby submit the following report of my examination of the cash and cash items in the hands of the County Treasurer of this County on this 28th day of February 2025.

<b>Total Amount of Deposit in First Interstate Bank, HS:</b>	\$	1,944,169.78
<b>Total Amount of Cash:</b>	\$	17,516.09
<b>Total Amount of Treasurer's Change Fund:</b>	\$	900.00
<b>Total Amount of Checks in Treasurer's Possession Not Exceeding Three Days:</b>	\$	50,667.64
<b>SAVINGS:</b>		
#4) First Interstate Bank, HS:	\$	1,466,150.03
<b>CERTIFICATES OF DEPOSIT:</b>		
#14) Schwab Treasury:	\$	8,828,684.74
<b>Itemized list of all items, checks and drafts that have been in the Treasurer's possession over three days:</b>		
Register of Deeds Change Fund:	\$	500.00
Highway Petty Cash:	\$	20.00
Election Petty Cash:	\$	15.00
<b>RETURNED CHECKS:</b>		
Hannah Thomas	\$	426.01
Suter, Debbie                      Stop payment	\$	729.45
<b>TOTAL</b>		<b>\$ 12,309,778.74</b>

Dated This 28th Day of February 2025.

  
Sue Ganje, County Auditor of  
of Fall River County

  
Teresa Pullen, County Treasurer  
of Fall River County

County Monies	\$	11,448,957.93
Held for other Entities	\$	695,310.48
Held in Trust	\$	165,510.33
<b>TOTAL</b>	<b>\$</b>	<b>12,309,778.74</b>

The Above Balance Reflects County Monies, Monies Held in Trust, and Monies Collected for and to be remitted to Other ENTITIES: SCHOOLS, TOWNS AND STATE.



*Emergency Management  
Fall River County*

*Dar Coy*  
Emergency Manager

*906 N. River St.  
Hot Springs, SD 57747*



1. Insurance on Capitol Items
2. Functional Ex. April 30 at the Oral school
3. Local HLS meeting, March 20 2pm south annex
4. Zoom meeting with Heather Whiting, code red and lpaws updates
5. Green Acres AAR March 18, HSVFD
6. Mass fatality training Rapid City March 13

Action Items:

1. EM 101 Pierre April 16, travel and lodging
2. HSEEP Pierre April 23, travel and lodging

**Emergency Responses:**

1. Barn/tractor fire 3/6
2. Structure fire: Almond street

*Dar Coy*  
*Emergency Manager*  
*Fall River County*  
*906 N. River Street*  
*Hot Springs, SD 57747*

**FALL RIVER COUNTY HIGHWAY DEPARTMENT  
APPROACH PERMIT  
APPLICATION FOR ROAD APPROACH PERMIT**

On this date 3-7-25, the Applicant hereby applies to the Fall River County Highway Department for permission to construct an approach road connection to the North side of (road name) Rocky Ford Rd (road #) 11 S approximately at SE4SW1/4 Sec 10, NE4NW1/4 Sec 15 T9S R4E B1M1. The road approach will serve a Residence and will be Fall River County, SD (residence, church, business, etc.) constructed between \_\_\_\_\_ and \_\_\_\_\_ at (beginning date) (completion date) at

applicant's expense.

Applicant acknowledges that approach and culverts shall meet County specifications, which are on file at the County Highway Department. Please attach a drawing or sketch showing the proposed location of the approach and set stakes in the ground to enable the Superintendent/Foreman to locate the proposed approach.

Name: Harley Miller Address: \_\_\_\_\_  
Phone #: 605-515-4927 Signed: Harley Miller  
(Property Owner)

**TO BE COMPLETED BY FALL RIVER COUNTY HIGHWAY DEPARTMENT**

Permit #: 3 12 25  
MO/DY/YR

PRELIMINARY INSPECTION: Date 3/12/25 By: Tony Marshall

Culvert Diameter 18" Culvert Length 24

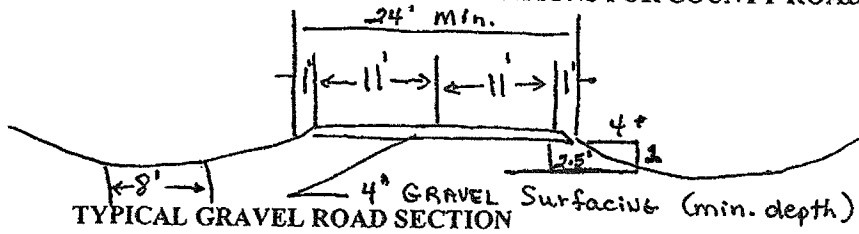
The crown of the presently traveled surface, including shoulder, to be continued at a distance of 20 feet from the nearest edge of the traveled surface of the road-shoulder facing the property.

Remarks: \_\_\_\_\_

PERMIT:  APPROVED  DENIED

Tony M. Marshall Date: 3/12/2025  
Superintendent/Foreman

FALL RIVER COUNTY HIGHWAY DEPARTMENT  
 SPECIFICATIONS FOR COUNTY ROADS AND APPROACHES

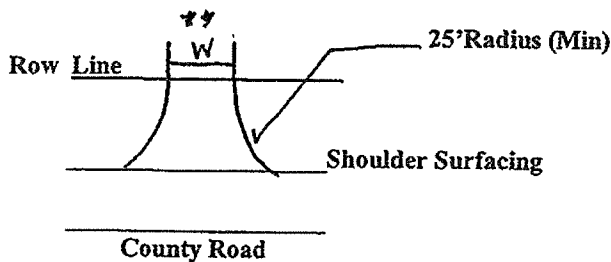


\* Maximum slope is 4 to 1 (current Standard of the South Dakota DOT Steeper slopes are subject to the Approval of Fall River County

The above Typical Road Section and Typical Approach Detail (below) shall be followed in the construction of roads to be placed on the County Road System. Road design shall be consistent with published Standards of the American Association of State Highway Transportation Officials. Road construction materials and methods shall conform to the current published edition the "Standard Specifications for Roads and Bridges" of the South Dakota Department of Transportation, when referenced in the Standards below. Copy of these Specifications is on file at the County Highway Department Office.

The following are standards which shall be met:

1. Maximum Grade of any road or portion of road shall not exceed ten percent (10%)
2. Maximum Degree of Curvature shall not exceed twenty one degrees (21 degrees)
3. Crown rates shall be between 0.02 11/11 to 0.06 11/11. Maximum Super elevation rate in curves shall be 0.07 11/11.
4. Culverts shall be sized to assure proper drainage. The minimum size of culvert shall be eighteen inches (18") in diameter. Although fifteen inch (15") diameter will be allowed under certain conditions.
5. Gravel Surfacing shall meet the requirements of Part B of the Standard Specifications.
6. Asphalt and Concrete construction methods and materials shall meet the requirements of Part C and Part D of the "Standard Specifications".
7. All Dead-End Roads shall have Cul-De-Sacs with a minimum constructed radius of fifty feet (50').
8. Approaches shall be constructed perpendicular as practical to the County Road.
9. The Minimum dedicated Right-Of-Way width shall be sixty six feet (66').



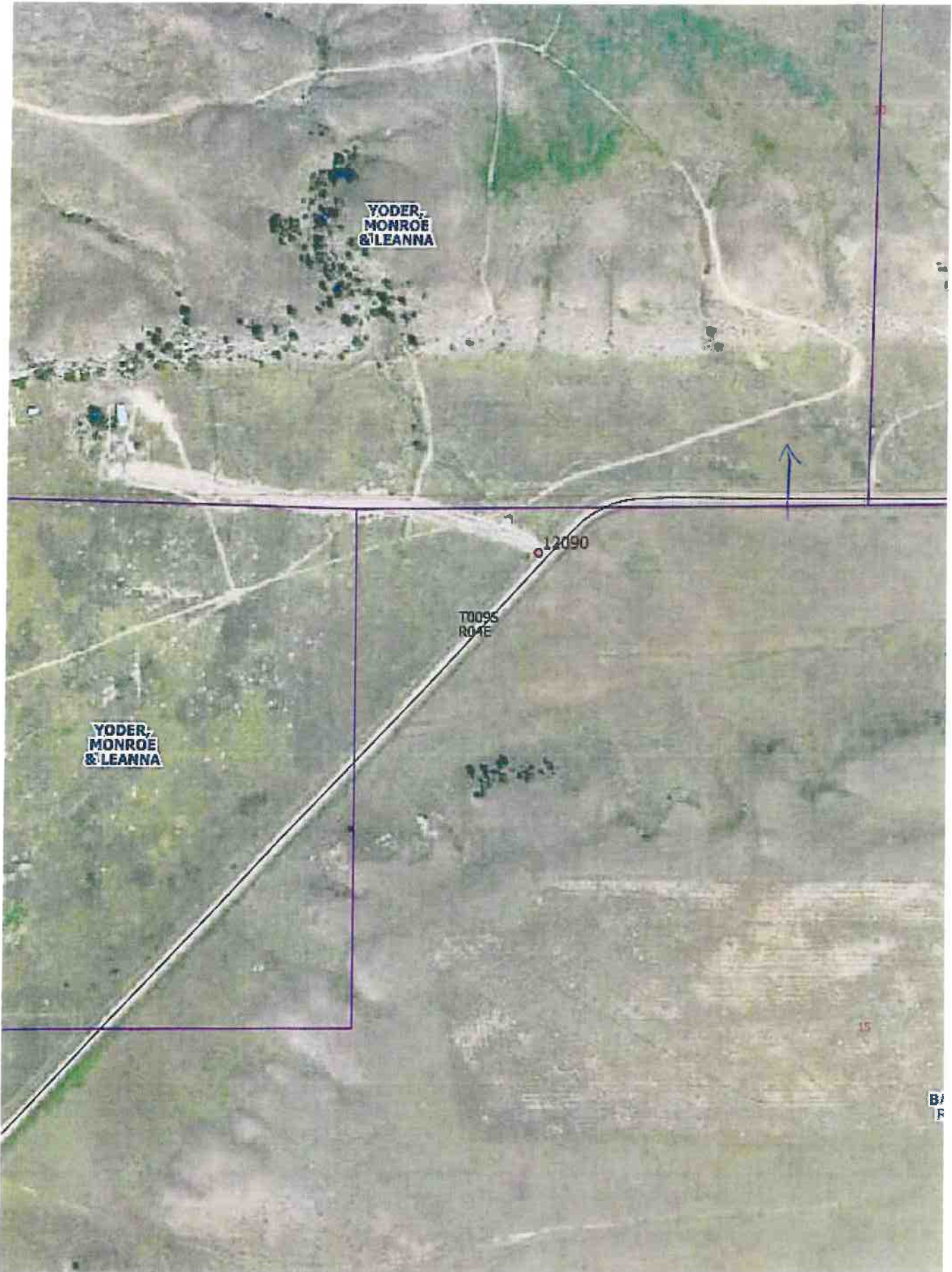
\*\* W Is Surface Width at Right-Of- Way line  
 W - 16' Min. for Single Residences  
 W - 20' Min for Multiple Residences  
 W - 28' Min. for Commercial  
 Maximum W - 50'

TYPICAL APPROACH DETAIL

1. Only one approach shall be allowed to each tract or parcel of land.
2. Existing roadway drainage will be maintained. Culverts shall be sized to assure proper drainage. The maximum size of culvert shall be eighteen Inches (18") in diameter, although fifteen Inch (15") diameter will be allowed under certain conditions. The minimum length of approach culvert shall be thirty-two feet (32')
3. Sight distance of approaches shall meet published Standards of the American Association of State Highway Transportation Officials.

APPROVED By: \_\_\_\_\_  
 (Chairman ) FALL RIVER COUNTY COMMISSIONERS DATE

RECOMMENDED BY: Thomas M. Haer  
 FALL RIVER COUNTY HIGHWAY SUPERINTENDENT DATE 7/12/2025



YODER,  
MONROE  
& LEANNA

YODER,  
MONROE  
& LEANNA

T009S  
R04E

12090

15

B/  
F

FALL RIVER COUNTY HIGHWAY DEPARTMENT  
APPROACH PERMIT  
APPLICATION FOR ROAD APPROACH PERMIT

admin's office

On this date 2/6/2025, the Applicant hereby applies to the Fall River County Highway Department for permission to construct an approach road connection to the South side of (road name) Rocky Ford Rd  
(road #) \_\_\_\_\_ approximately at NE4SE4NW4 Sec 16 T9S R4E BHM,  
The road approach will serve a residence and will be at Fall River County, SD  
constructed between 2025 and \_\_\_\_\_ (completion date)  
(beginning date)

applicant's expense.

Applicant acknowledges that approach and culverts shall meet County specifications, which are on file at the County Highway Department. Please attach a drawing or sketch showing the proposed location of the approach and set stakes in the ground to enable the Superintendent/Foreman to locate the proposed approach.

Name: Meccasue Simmons Address: Westberg tract 2

Phone #: 207 416 6078 Signed: Meccasue Simmons  
(Property Owner)

2 ACRES

TO BE COMPLETED BY FALL RIVER COUNTY HIGHWAY DEPARTMENT

Permit #: 31225  
MO/DY/YR

PRELIMINARY INSPECTION: Date 3/12/2025 By: Tony March

Culvert Diameter 18" Culvert Length 24'

The crown of the presently traveled surface, including shoulder, to be continued at a distance of 20 feet from the nearest edge of the traveled surface of the road-shoulder facing the property.  
Remarks: \_\_\_\_\_

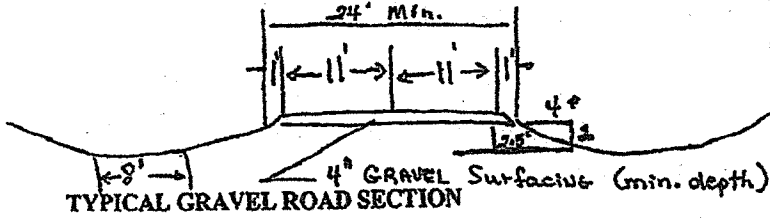
PERMIT:  APPROVED  DENIED

Tony M. March Date: 3/12/2025  
Superintendent/Foreman

<sup>the</sup> Gate is 90'-110' from the left property line facing the trees

Just looking to put a culvert in to make entering my lot easier. Don't need a whole "road"?

FALL RIVER COUNTY HIGHWAY DEPARTMENT  
 SPECIFICATIONS FOR COUNTY ROADS AND APPROACHES

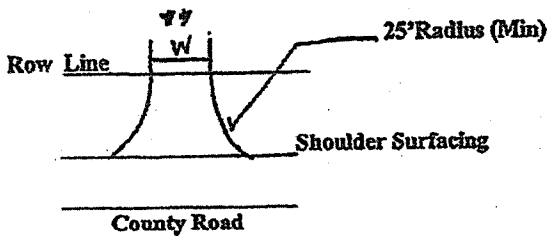


\* Maximum slope is 4 to 1 (current Standard of the South Dakota DOT Steeper slopes are subject to the Approval of Fall River County

The above Typical Road Section and Typical Approach Detail (below) shall be followed in the construction of roads to be placed on the County Road System. Road design shall be consistent with published Standards of the American Association of State Highway Transportation Officials. Road construction materials and methods shall conform to the current published edition the "Standard Specifications for Roads and Bridges" of the South Dakota Department of Transportation, when referenced in the Standards below. Copy of these Specifications is on file at the County Highway Department Office.

The following are standards which shall be met:

1. Maximum Grade of any road or portion of road shall not exceed ten percent (10%)
2. Maximum Degree of Curvature shall not exceed twenty one degrees (21 degrees)
3. Crown rates shall be between 0.02 11/11 to 0.06 11/11. Maximum Super elevation rate in curves shall be 0.07 11/11.
4. Culverts shall be sized to assure proper drainage. The minimum size of culvert shall be eighteen inches (18") in diameter. Although fifteen inch (15") diameter will be allowed under certain conditions.
5. Gravel Surfacing shall meet the requirements of Part B of the Standard Specifications.
6. Asphalt and Concrete construction methods and materials shall meet the requirements of Part C and Part D of the "Standard Specifications".
7. All Dead-End Roads shall have Cul-De-Sacs with a minimum constructed radius of fifty feet (50').
8. Approaches shall be constructed perpendicular as practical to the County Road.
9. The Minimum dedicated Right-Of-Way width shall be sixty six feet (66').



W Is Surface Width at Right-Of-Way line  
 W - 16' Min. for Single Residences  
 W - 20' Min for Multiple Residences  
 W - 28' Min. for Commercial  
 Maximum W - 50'

TYPICAL APPROACH DETAIL

1. Only one approach shall be allowed to each tract or parcel of land.
2. Existing roadway drainage will be maintained. Culverts shall be sized to assure proper drainage. The maximum size of culvert shall be eighteen Inches (18") in diameter, although fifteen Inch (15") diameter will be allowed under certain conditions. The minimum length of approach culvert shall be thirty-two feet (32')
3. Sight distance of approaches shall meet published Standards of the American Association of State Highway Transportation Officials.

APPROVED BY: \_\_\_\_\_ DATE \_\_\_\_\_  
 (Chairman) FALL RIVER COUNTY COMMISSIONERS

RECOMMENDED BY: Terry N. Kell DATE 3/17/2025  
 FALL RIVER COUNTY HIGHWAY SUPERINTENDENT



INST. OF  
RANGE &  
AMERICAN  
MUSTANG

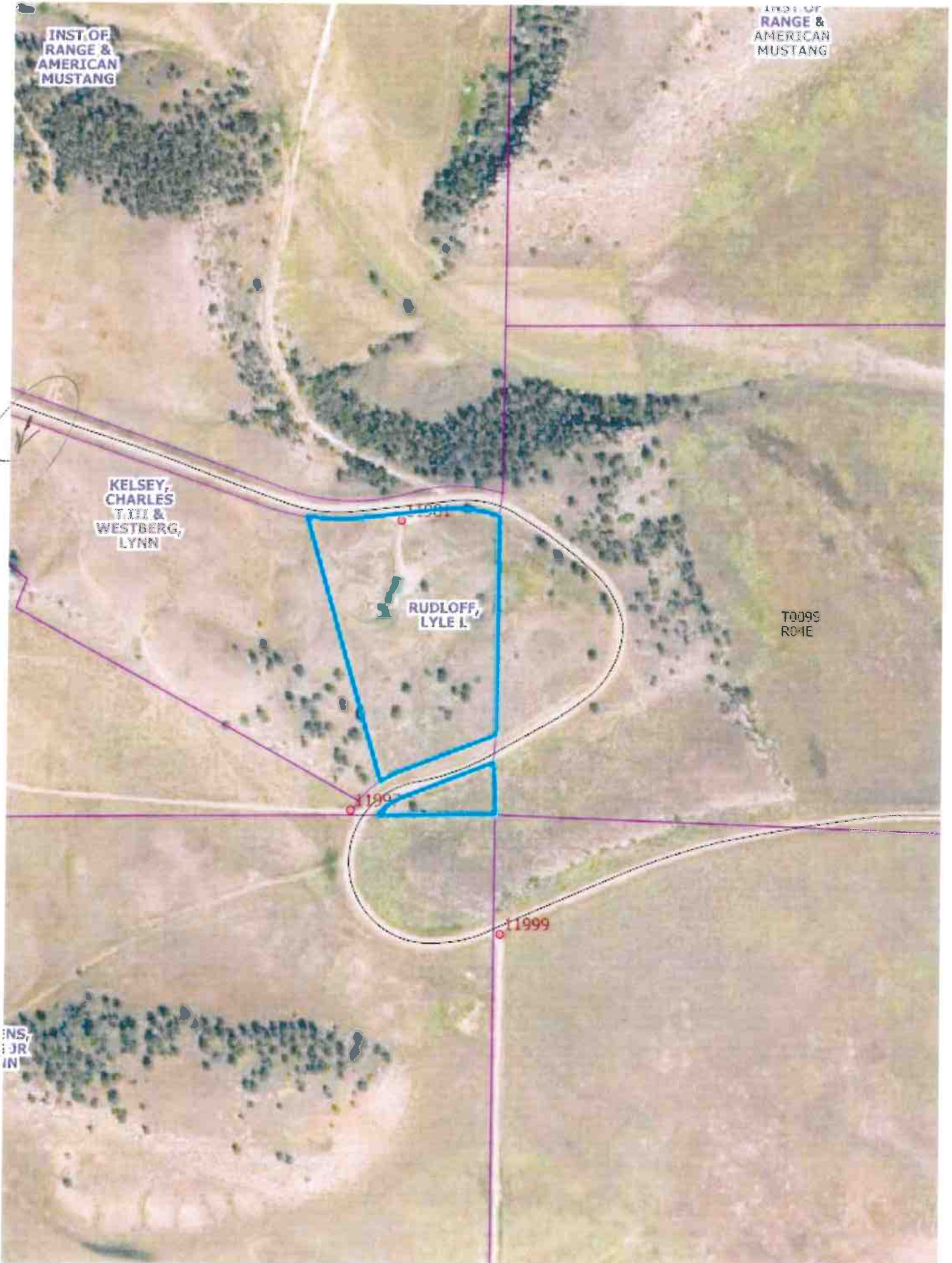
INST. OF  
RANGE &  
AMERICAN  
MUSTANG

KELSEY,  
CHARLES  
THI &  
WESTBERG,  
LYNN

RUDLOFF,  
LYLE L.

T009S  
R04E

ENS,  
JR  
IN



**APPLICATION FOR PERMIT TO OCCUPY COUNTY HIGHWAY RIGHT-OF- WAY**

**TO: THE BOARD OF COUNTY COMMISSIONERS**

**DATE:** 2-19-25 **FALL RIVER COUNTY,** Rumford, **SOUTH DAKOTA**

Application is hereby made by Black Hills Energy, South Dakota for permit to occupy highway right-of-way located from: Rumford Shortcut Rd Section 32 T10S R1E  
*red circles on attached map showing both locations* **To:** Also Rumford Rd 400 ft South of Railroad Tract

**AERIAL FACILITIES:** Location, type and size of the proposed line and anchors with respect to the center line of the road or outer edge of the right-of-way and location of crossings showing any right-of-way are shown on Exhibit "A" (Sketch) attached.

**UNDERGROUND FACILITIES:** A sketch showing the approximate route and location of the proposed facility for which a permit is hereby requested is attached as Exhibit "A" and made a part hereof.

The following information is pertinent to the proposed installation:

1. Intended usage or rating: Single cable to supply electricity
2. Pipe size, cable size and type: \_\_\_\_\_
3. Outside diameter: 3 inch
4. Maximum pressure at which pipeline will be operated: \_\_\_\_\_
5. Size and Type of metal casing: Schedule 80 PVC 3 inch
6. Minimum depth of cable or pipeline: 48"
7. Casing will be installed by minimum size boring and will extend from toe of in-slope to toe of in-slope.
8. This Installation will comply with the most recently adopted ASA, Code for Gas Transmission and Distribution Pipe systems or the National Safety Code. Marker sign(s) will be installed where appropriate.

The installation and maintenance of said utility facilities will not interfere with or impair construction, maintenance or use of any highway and will comply with all safety regulations of the State and Federal Government. When trenching is done on County R.O.W. the trenches must be tamped to avoid any settlement.

Future adjustments and maintenance will be in accordance with State and Federal Laws and Regulations and will be performed at no cost to the County or the Federal Government.

APPROVED \_\_\_\_\_ 20 \_\_\_\_\_

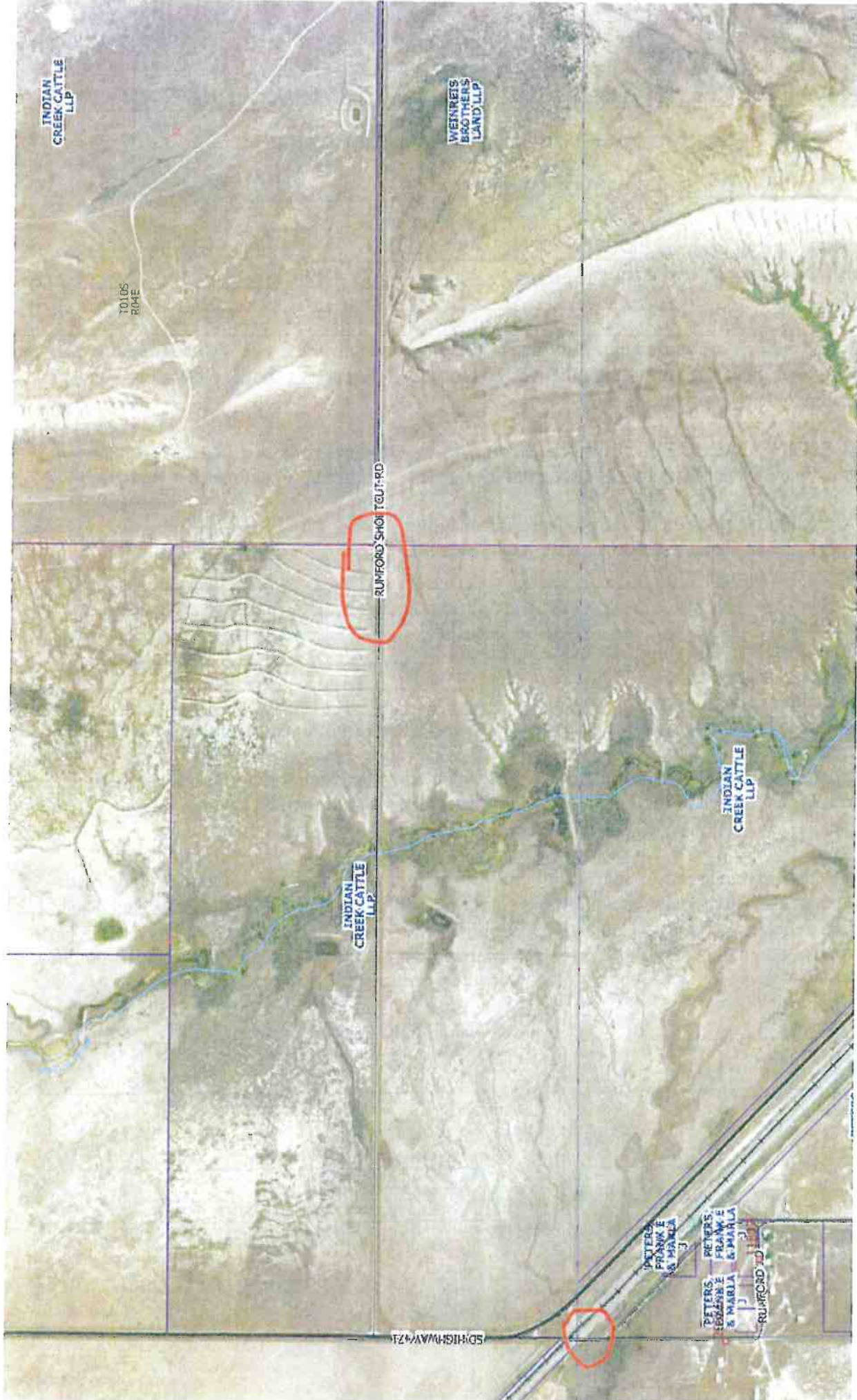
SUBMITTED 2-18 2025

\_\_\_\_\_  
County Chairman

\_\_\_\_\_  
By Kelsey Peterson

\_\_\_\_\_  
County Auditor

Job Planner BHE/Hot Springs  
\_\_\_\_\_  
Title



**APPLICATION FOR PERMIT TO OCCUPY COUNTY HIGHWAY RIGHT-OF- WAY**

**TO: THE BOARD OF COUNTY COMMISSIONERS**

**DATE:** 3-13-25 **FALL RIVER COUNTY,** Oral, **SOUTH DAKOTA**

Application is hereby made by Black Hills Energy, South Dakota for permit to occupy highway right-of-way located from: west of Oral in front of Fall River Water Users Office To: East to De Baer place 14197 E. Oral Rd South side of Oral Rd to RR then transfer to North side

**AERIAL FACILITIES:** Location, type and size of the proposed line and anchors with respect to the center line of the road or outer edge of the right-of-way and location of crossings showing any right-of-way are shown on Exhibit "A" (Sketch) attached.

**UNDERGROUND FACILITIES:** A sketch showing the approximate route and location of the proposed facility for which a permit is hereby requested is attached as Exhibit "A" and made a part hereof.

The following information is pertinent to the proposed installation:

1. Intended usage or rating: Rebuild power grid system to Oral
2. Pipe size, cable size and type: Direct buried cable
3. Outside diameter: \_\_\_\_\_
4. Maximum pressure at which pipeline will be operated: \_\_\_\_\_
5. Size and Type of metal casing: \_\_\_\_\_
6. Minimum depth of cable or pipeline: 50" - 45"
7. Casing will be installed by minimum size boring and will extend from toe of in-slope to toe of in-slope.
8. This Installation will comply with the most recently adopted ASA, Code for Gas Transmission and Distribution Pipe systems or the National Safety Code. Marker sign(s) will be installed where appropriate.

The installation and maintenance of said utility facilities will not interfere with or impair construction, maintenance or use of any highway and will comply with all safety regulations of the State and Federal Government. When trenching is done on County R.O.W. the trenches must be tamped to avoid any settlement.

Future adjustments and maintenance will be in accordance with State and Federal Laws and Regulations and will be performed at no cost to the County or the Federal Government.

APPROVED \_\_\_\_\_ 20 \_\_\_\_\_

County Chairman

County Auditor

SUBMITTED March 13 20 25

Black Hills Energy

By Kelsey Peterson

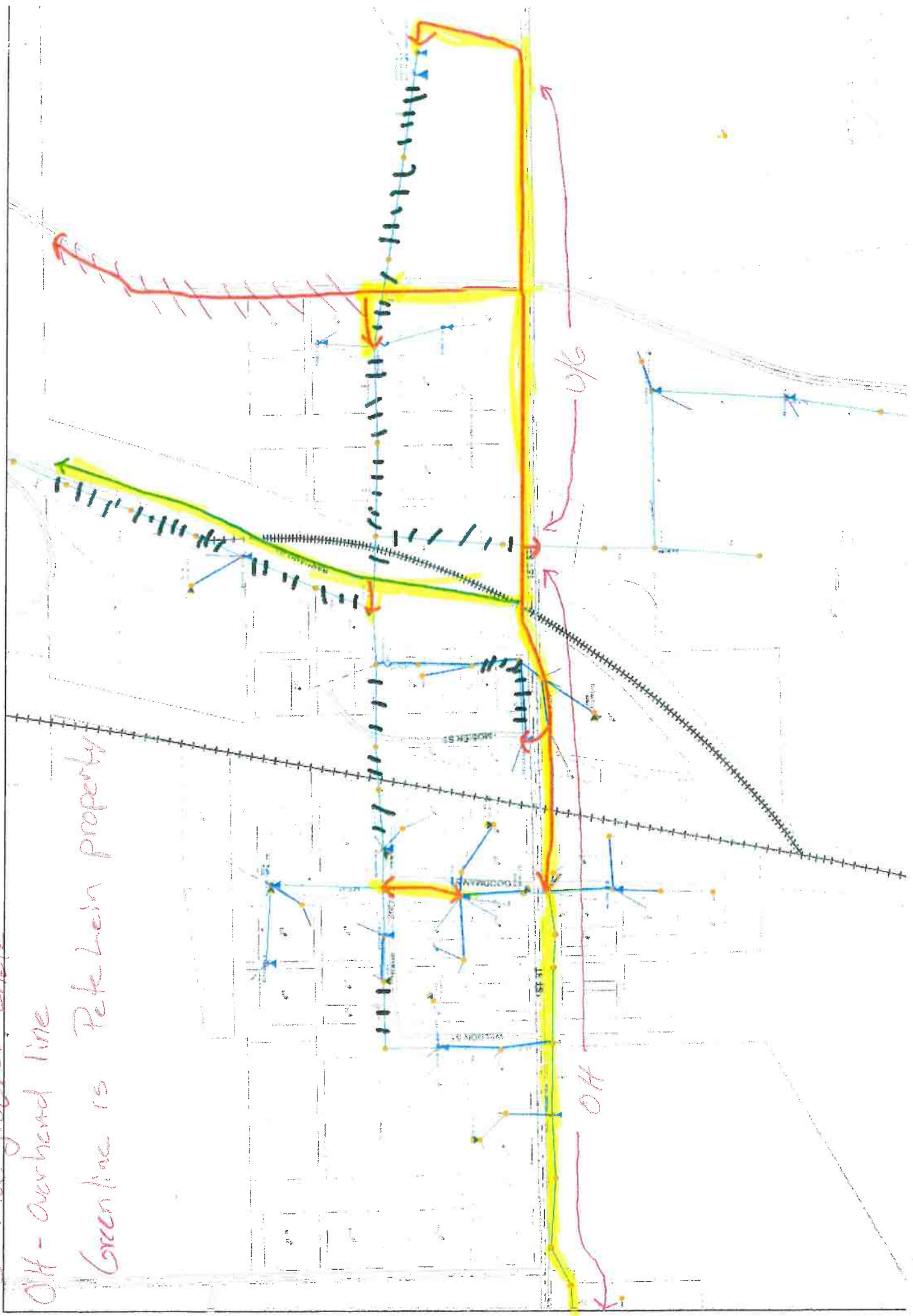
Sub Planner

Title 605-415-2751

UG - underground cable

OH - overhead line

Green line is Petkovic property



**APPLICATION FOR PERMIT TO OCCUPY COUNTY HIGHWAY RIGHT-OF-WAY**

TO: THE BOARD OF COUNTY COMMISSIONERS

DATE: March 3, 2025

FALL RIVER COUNTY,  
HOT SPRINGS, SOUTH DAKOTA

GW PROJECT NUMBER: 29000; T25150

Application is hereby made by Golden West Telecommunications, South Dakota for permit to occupy highway right-of-way located from: an existing vault on the south side of W Ardmore Rd approx 535' east of RR  
To: a new vault on the north side of W Ardmore Rd.

AERIAL FACILITIES: Location, type and size of the proposed line and anchors with respect to the centerline of the road or outer edge of the right-of-way and location of crossings showing any right-of-way are shown on Exhibit "A" (Sketch) attached.

UNDERGROUND FACILITIES: A sketch showing the approximate route and location of the proposed facility for which a permit is hereby requested is attached as Exhibit "A" and made a part hereof.

The following information is pertinent to the proposed installation:

1. Intended usage or rating: To provide service to residence at 12000 W Ardmore Rd
2. Pipe size, cable size and type: Cable: BFO 12; Duct: PVC Innerduct
3. Outside diameter: Cable: 0.56"; Duct: 1.660"
4. Maximum pressure at which pipeline will be operated: N/A
5. Size and Type of metal casing: N/A
6. Minimum depth of cable or pipeline: 36"
7. Casing will be installed by minimum size boring and will extend from toe of in-slope to toe of in-slope.
8. This installation will comply with the most recently adopted ASA, Code for Gas Transmission and Distribution Pipe systems or the National Safety Code. Marker sign(s) will be installed where appropriate.

The installation and maintenance of said utility facilities will not interfere with or impair construction, maintenance or use of any highway and will comply with all safety regulations of the State and Federal Government. When trenching is done on County R.O.W. the trenches must be tamped to avoid any settlement.

Future adjustments and maintenance will be in accordance with State and Federal Laws and Regulations and will be performed at not cost to the County or the Federal Government.

APPROVED \_\_\_\_\_ 20\_\_\_\_

SUBMITTED March 3 \_\_\_\_\_ 20 25

\_\_\_\_\_  
County Chairman

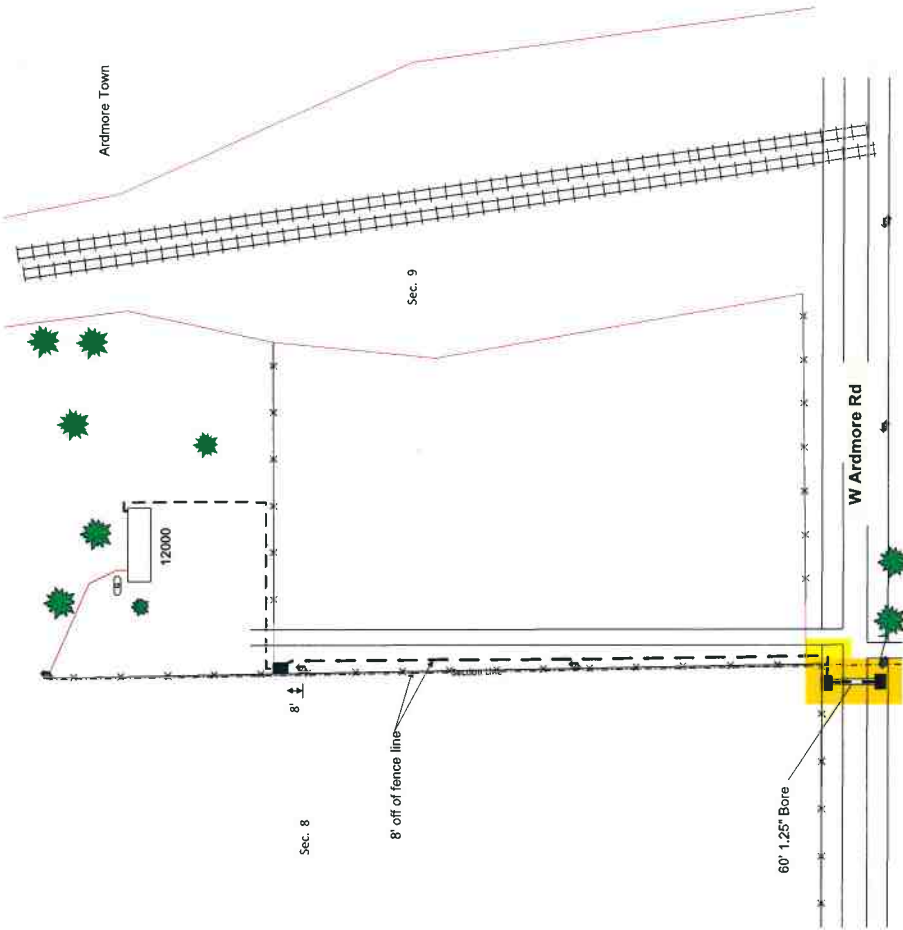
\_\_\_\_\_  
Golden West Telecommunications

\_\_\_\_\_  
County Auditor

By Mickie Abell, SR/WA-EU

\_\_\_\_\_  
Right of Way Specialist

Title



**CONFIDENTIAL**

- Proposed Cable Route
  - Proposed Bore
- State: South Dakota  
 County: Fall River  
 Twp: 12S  
 Range: 4E



**As Staked**

**Golden West Telecommunications**

Name: Fall River Co Hwy  
 WD: Ardmore 12S150  
 Exch: Ardmore  
 Route: W Ardmore Rd  
 ROW: Public and Private

Staked By:	CB	Date:	2-28-25
Revised By: <td>MA</td> <td>Date:</td> <td>3-3-25</td>	MA	Date:	3-3-25
Revised By:		Date:	
Revised By:		Date:	
Revised By:		Date:	
As Built By:		Date:	

Drawing Not To Scale

Sheet	1	of	1
-------	---	----	---

CAUTION: BURIED FACILITIES MAY BE PRESENT. THE CONTRACTOR IS SOLELY RESPONSIBLE FOR LOCATING PRIOR TO CONSTRUCTION.

**APPLICATION FOR PERMIT TO OCCUPY COUNTY HIGHWAY RIGHT-OF-WAY**

TO: THE BOARD OF COUNTY COMMISSIONERS

DATE: 1/16/2025

FALL RIVER COUNTY,  
HOT SPRINGS, SOUTH DAKOTA

GW PROJECT NUMBER: 28694

Application is hereby made by Golden West Telecommunications, South Dakota for permit to occupy highway right-of-way located from: North Corner of Oral Loop

To: Wg Flats Loop

AERIAL FACILITIES: Location, type and size of the proposed line and anchors with respect to the centerline of the road or outer edge of the right-of-way and location of crossings showing any right-of-way are shown on Exhibit "A" (Sketch) attached.

UNDERGROUND FACILITIES: A sketch showing the approximate route and location of the proposed facility for which a permit is hereby requested is attached as Exhibit "A" and made a part hereof.

The following information is pertinent to the proposed installation:

1. Intended usage or rating: To provide telecommunication services to 14431 Wg Flats Loop
2. Pipe size, cable size and type: Cable: BFO 24; Duct: Sch 40 PVC
3. Outside diameter: Cable: 0.56" O.D.; Duct: 1.660" O.D.
4. Maximum pressure at which pipeline will be operated: NA
5. Size and Type of metal casing: NA
6. Minimum depth of cable or pipeline: 36"
7. Casing will be installed by minimum size boring and will extend from toe of in-slope to toe of in-slope.
8. This installation will comply with the most recently adopted ASA, Code for Gas Transmission and Distribution Pipe systems or the National Safety Code. Marker sign(s) will be installed where appropriate.

The installation and maintenance of said utility facilities will not interfere with or impair construction, maintenance or use of any highway and will comply with all safety regulations of the State and Federal Government. When trenching is done on County R.O.W. the trenches must be tamped to avoid any settlement.

Future adjustments and maintenance will be in accordance with State and Federal Laws and Regulations and will be performed at not cost to the County or the Federal Government.

APPROVED \_\_\_\_\_ 20\_\_

SUBMITTED 1/16/ \_\_\_\_\_ 20 25

\_\_\_\_\_  
County Chairman

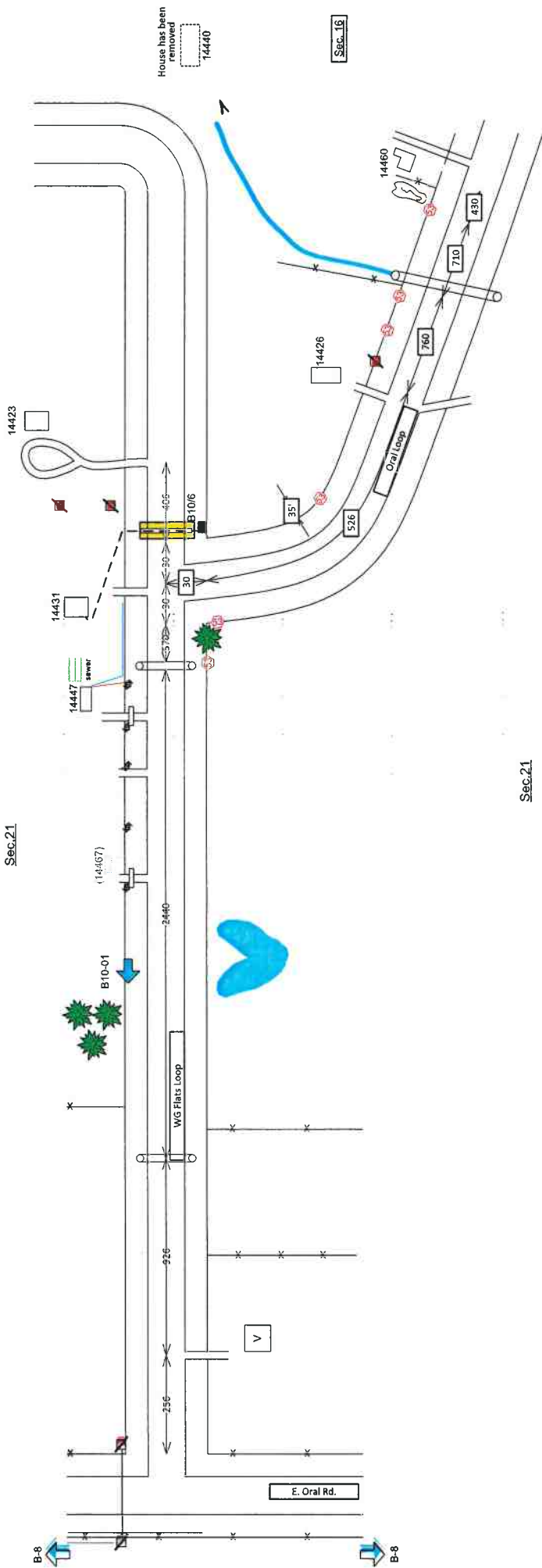
\_\_\_\_\_  
Golden West Telecommunications

\_\_\_\_\_  
County Auditor

By Carrie Schell

\_\_\_\_\_  
Right of Way Specialist  
Title





State: South Dakota  
 County: Fall River  
 Twsp: 7S  
 Range: 8E

 Proposed Bore

**CONFIDENTIAL**

CAUTION: BURIED FACILITIES MAY BE PRESENT. THE CONTRACTOR IS SOLELY RESPONSIBLE FOR LOCATING PRIOR TO CONSTRUCTION.

FROMDATE : 01/01/2024

FALL RIVER COUNTY HIGHWAY DEPT

CREATE DATE: 03/13/2025

TODATE : 12/31/2024

PROJECT COST RECORD JOURNAL BY  
FUNCTION BY TYPE: SEC

PAGE: 1 OF 21

PROJECT	FUNCTION	DIRECT	INDIRECT	TOTAL
11S ROCKYFORD RD/PM-1.25	412 Blading/Grading	2,999.69	188.74	3,188.43
	414 Dust palliatives	459.00	14.14	473.14
	415 Check Roads	317.31	44.52	361.83
	419 Othr Cst/fil ptholes	63.25	7.84	71.09
	422 REPLACING-REGRAVEL	6,499.64	69.66	6,569.30
	442 Repair/Repl culvrt	209.25	27.51	236.76
	447 Mowing	771.88	55.70	827.58
	461 Move Equipment	38.00	5.22	43.22
	511 Snow & Ice Removal	63.75	13.06	76.81
	518 Ck Roads>ice/snow	99.38	12.68	112.05
	522 Rpr/mtn/sign mailbox	38.00	5.22	43.22
	ADM COSTS ==>			3,792.78
	<b>TOTAL ==&gt;</b>	<b>11,559.14</b>	<b>444.29</b>	<b>15,796.21</b>
14A SAGE RD	412 Blading/Grading	1,080.01	74.99	1,155.00
	415 Check Roads	25.46	2.65	28.11
	422 REPLACING-REGRAVEL	3,192.73	166.93	3,359.65
	447 Mowing	109.50	7.07	116.57
		ADM COSTS ==>		
	<b>TOTAL ==&gt;</b>	<b>4,407.69</b>	<b>251.64</b>	<b>4,659.33</b>
14B SHADY RD	412 Blading/Grading	1,117.37	81.62	1,198.99
	415 Check Roads	99.74	10.19	109.93
	422 REPLACING-REGRAVEL	2,725.54	57.47	2,783.01
	447 Mowing	126.00	9.42	135.42
	522 Rpr/mtn/sign mailbox	152.73	15.93	168.66
	ADM COSTS ==>			0.00
	<b>TOTAL ==&gt;</b>	<b>4,221.38</b>	<b>174.63</b>	<b>4,396.01</b>
14C ASH RD	412 Blading/Grading	1,179.74	74.32	1,254.06
	415 Check Roads	61.79	7.54	69.32
	422 REPLACING-REGRAVEL	4,139.86	57.47	4,197.34
	447 Mowing	328.50	21.21	349.71
	518 Ck Roads>ice/snow	25.46	2.65	28.11
	ADM COSTS ==>			0.00
	<b>TOTAL ==&gt;</b>	<b>5,735.34</b>	<b>163.19</b>	<b>5,898.53</b>
17A VALLEY RD	412 Blading/Grading	532.42	34.51	566.92
	415 Check Roads	49.09	7.50	56.58

FROMDATE : 01/01/2024

FALL RIVER COUNTY HIGHWAY DEPT

CREATE DATE: 03/13/2025

TODATE : 12/31/2024

PROJECT COST RECORD JOURNAL BY  
FUNCTION BY TYPE: SEC

PAGE: 2 OF 21

17A VALLEY RD	422 REPLACING-REGRAVEL	3,957.46	57.45	4,014.91
	447 Mowing	82.63	6.68	89.31
			ADM COSTS ===>	0.00
	<b>TOTAL ===&gt;</b>	<b>4,621.58</b>	<b>106.14</b>	<b>4,727.72</b>
17B SPRINGS CREEK RD	412 Blading/Grading	388.60	23.89	412.48
	415 Check Roads	48.63	4.84	53.47
	422 REPLACING-REGRAVEL	4,836.79	74.28	4,911.07
	447 Mowing	93.50	8.91	102.41
			ADM COSTS ===>	0.00
<b>TOTAL ===&gt;</b>	<b>5,367.51</b>	<b>111.92</b>	<b>5,479.43</b>	
17C MEMORIAL RD	412 Blading/Grading	1,994.97	130.61	2,125.58
	415 Check Roads	218.09	30.60	248.68
	422 REPLACING-REGRAVEL	3,261.21	80.52	3,341.73
	447 Mowing	226.13	15.60	241.72
	461 Move Equipment	84.25	4.97	89.22
	511 Snow & Ice Removal	158.00	7.07	165.07
			ADM COSTS ===>	0.00
<b>TOTAL ===&gt;</b>	<b>5,942.64</b>	<b>269.36</b>	<b>6,212.00</b>	
18A WHITE TAIL RD	412 Blading/Grading	984.44	86.96	1,071.40
	447 Mowing	143.50	8.91	152.41
	461 Move Equipment	168.50	8.91	177.41
	518 Ck Roads>ice/snow	25.46	2.65	28.11
			ADM COSTS ===>	0.00
<b>TOTAL ===&gt;</b>	<b>1,321.90</b>	<b>107.44</b>	<b>1,429.34</b>	
18B HOT BROOK CNYN RD	412 Blading/Grading	276.75	14.91	291.66
	415 Check Roads	131.50	17.98	149.48
	431 Patching	436.96	0.00	436.96
	442 Repair/Repl culvrt	187.00	17.83	204.83
	443 Clean for drainage	631.50	78.16	709.66
	447 Mowing	801.13	56.06	857.19
	448 Debris removal	457.50	52.25	509.75
	511 Snow & Ice Removal	2,664.38	103.54	2,767.92
	513 Sanding icy surfaces	944.83	36.52	981.35
	518 Ck Roads>ice/snow	90.00	12.04	102.04
	519 Mix Salt Sand	6.25	0.00	6.25
	522 Rpr/mtn/sign mailbox	66.38	7.20	73.57

FROMDATE : 01/01/2024

FALL RIVER COUNTY HIGHWAY DEPT

CREATE DATE: 03/13/2025

TODATE : 12/31/2024

PROJECT COST RECORD JOURNAL BY  
FUNCTION BY TYPE: SEC

PAGE: 3 OF 21

18B HOT BROOK CNYN RD			ADM COSTS ===>	0.00
	<b>TOTAL ===&gt;</b>	<b>6,694.17</b>	<b>396.48</b>	<b>7,090.65</b>
18C STATE LINE ROAD	415 Check Roads	73.88	7.45	81.33
	518 Ck Roads>ice/snow	61.38	7.45	68.83
			ADM COSTS ===>	0.00
	<b>TOTAL ===&gt;</b>	<b>135.25</b>	<b>14.91</b>	<b>150.16</b>
18D PARADISE RD	412 Blading/Grading	365.25	23.51	388.76
	415 Check Roads	25.25	2.61	27.86
	422 REPLACING-REGRAVEL	1,766.91	46.71	1,813.62
	518 Ck Roads>ice/snow	12.63	1.31	13.93
	522 Rpr/mtn/sign mailbox	48.00	4.71	52.71
			ADM COSTS ===>	0.00
	<b>TOTAL ===&gt;</b>	<b>2,218.03</b>	<b>78.86</b>	<b>2,296.89</b>
18S OLD HIGHWAY 18	415 Check Roads	143.00	17.01	160.01
	431 Patching	824.77	0.00	824.77
	447 Mowing	892.00	70.07	962.07
	511 Snow & Ice Removal	1,071.25	51.07	1,122.32
	513 Sanding icy surfaces	270.88	14.14	285.01
	518 Ck Roads>ice/snow	242.23	36.82	279.05
	522 Rpr/mtn/sign mailbox	167.63	20.26	187.88
			ADM COSTS ===>	0.00
	<b>TOTAL ===&gt;</b>	<b>3,611.75</b>	<b>209.36</b>	<b>3,821.11</b>
19A SHAW RD/MIN MTC	447 Mowing	35.88	2.23	38.10
			ADM COSTS ===>	0.00
	<b>TOTAL ===&gt;</b>	<b>35.88</b>	<b>2.23</b>	<b>38.10</b>
19B CEMETERY RD	412 Blading/Grading	412.75	23.51	436.26
	447 Mowing	118.50	8.91	127.41
			ADM COSTS ===>	0.00
	<b>TOTAL ===&gt;</b>	<b>531.25</b>	<b>32.42</b>	<b>563.67</b>
19C LENNON SCHOOL RD	412 Blading/Grading	852.00	52.25	904.25
	417 Magnetic Sweeping	219.00	14.14	233.14
	447 Mowing	274.75	20.44	295.19
			ADM COSTS ===>	0.00
	<b>TOTAL ===&gt;</b>	<b>1,345.75</b>	<b>86.82</b>	<b>1,432.57</b>
1A FEEDER WAY RD	412 Blading/Grading	1,365.89	102.42	1,468.31

FROMDATE : 01/01/2024

FALL RIVER COUNTY HIGHWAY DEPT

CREATE DATE: 03/13/2025

TODATE : 12/31/2024

PROJECT COST RECORD JOURNAL BY  
FUNCTION BY TYPE: SEC

PAGE: 4 OF 21

1A FEEDER WAY RD	415 Check Roads	152.73	15.93	168.66
	422 REPLACING-REGRAVEL	9,881.53	224.50	10,106.03
	447 Mowing	576.00	41.18	617.18
	511 Snow & Ice Removal	169.50	9.42	178.92
	513 Sanding icy surfaces	261.26	9.22	270.48
	522 Rpr/mtn/sign mailbox	25.00	0.00	25.00
			ADM COSTS ===>	0.00
	<b>TOTAL ===&gt;</b>	<b>12,431.90</b>	<b>402.68</b>	<b>12,834.58</b>
1B BUNNY DRIVE	447 Mowing	72.00	4.51	76.51
	511 Snow & Ice Removal	88.00	11.37	99.37
	513 Sanding icy surfaces	44.00	9.01	53.01
			ADM COSTS ===>	0.00
	<b>TOTAL ===&gt;</b>	<b>204.00</b>	<b>24.89</b>	<b>228.89</b>
1C SUNNY BROOK RD	412 Blading/Grading	1,807.00	125.39	1,932.39
	415 Check Roads	89.12	10.58	99.69
	422 REPLACING-REGRAVEL	3,136.88	136.25	3,273.13
	436 Reclm Grvl/Pull shld	412.25	28.74	440.99
	447 Mowing	213.25	18.08	231.33
			ADM COSTS ===>	0.00
	<b>TOTAL ===&gt;</b>	<b>5,658.49</b>	<b>319.03</b>	<b>5,977.52</b>
1D HOWL & E.HOWL ROAD	412 Blading/Grading	4,453.38	314.78	4,768.16
	415 Check Roads	113.96	9.26	123.22
	422 REPLACING-REGRAVEL	11,258.11	358.45	11,616.56
	437 New Approaches	39.50	5.53	45.03
	447 Mowing	308.75	22.28	331.03
	518 Ck Roads>ice/snow	25.25	2.61	27.86
	522 Rpr/mtn/sign mailbox	50.50	5.22	55.72
		ADM COSTS ===>	0.00	
	<b>TOTAL ===&gt;</b>	<b>16,249.45</b>	<b>718.14</b>	<b>16,967.59</b>
1E SWK RD E.OF INT.W/2	412 Blading/Grading	4,025.38	293.88	4,319.26
	415 Check Roads	40.50	8.30	48.80
	422 REPLACING-REGRAVEL	20,108.09	423.61	20,531.70
	447 Mowing	345.75	40.11	385.86
	522 Rpr/mtn/sign mailbox	516.75	54.65	571.40
			ADM COSTS ===>	0.00
	<b>TOTAL ===&gt;</b>	<b>25,036.47</b>	<b>820.56</b>	<b>25,857.02</b>

FROMDATE : 01/01/2024

FALL RIVER COUNTY HIGHWAY DEPT

CREATE DATE: 03/13/2025

TODATE : 12/31/2024

PROJECT COST RECORD JOURNAL BY  
FUNCTION BY TYPE: SEC

PAGE: 5 OF 21

1F S. FORK /N=BLK TAIL	412 Blading/Grading	1,592.75	96.65	1,689.40
	415 Check Roads	70.25	7.99	78.24
	422 REPLACING-REGRAVEL	3,178.13	131.36	3,309.48
	447 Mowing	335.00	22.54	357.54
	459 Othr csts/cattle grd	735.00	97.32	832.32
	461 Move Equipment	255.00	39.95	294.95
	511 Snow & Ice Removal	228.75	13.06	241.81
	518 Ck Roads>ice/snow	25.25	2.61	27.86
	522 Rpr/mtn/sign mailbox	63.25	7.84	71.09
	912 REPAIR COSTS	44.00	9.01	53.01
	ADM COSTS ===>			0.00
	<b>TOTAL ===&gt;</b>	<b>6,527.38</b>	<b>428.34</b>	<b>6,955.71</b>
1G SAND CREEK ROAD	412 Blading/Grading	63.75	13.06	76.81
		ADM COSTS ===>		0.00
	<b>TOTAL ===&gt;</b>	<b>63.75</b>	<b>13.06</b>	<b>76.81</b>
1N SIDES ROAD	447 Mowing	143.50	8.91	152.41
	522 Rpr/mtn/sign mailbox	24.00	2.36	26.36
		ADM COSTS ===>		0.00
	<b>TOTAL ===&gt;</b>	<b>167.50</b>	<b>11.27</b>	<b>178.77</b>
20S BLACK BANKS ROAD	412 Blading/Grading	1,398.88	91.76	1,490.64
	415 Check Roads	124.75	16.60	141.35
	436 Reclm Grvl/Pull shld	322.50	16.60	339.10
	447 Mowing	474.00	35.65	509.65
	448 Debris removal	46.25	9.01	55.26
	498 Stockpile Gravel	59.50	9.42	68.92
	511 Snow & Ice Removal	317.50	15.78	333.28
	518 Ck Roads>ice/snow	45.75	5.53	51.28
	522 Rpr/mtn/sign mailbox	216.00	21.21	237.21
		ADM COSTS ===>		
	<b>TOTAL ===&gt;</b>	<b>3,005.13</b>	<b>221.56</b>	<b>3,226.68</b>
298 FORT IGLOO ROAD	411 Patching	102.00	18.34	120.34
	415 Check Roads	25.25	2.61	27.86
	419 Othr Cst/fil ptholes	2,290.64	198.36	2,488.99
	422 REPLACING-REGRAVEL	2,942.75	59.82	3,002.57
	447 Mowing	143.50	8.91	152.41
	448 Debris removal	53.00	8.30	61.30

FROMDATE : 01/01/2024

FALL RIVER COUNTY HIGHWAY DEPT

CREATE DATE: 03/13/2025

TODATE : 12/31/2024

PROJECT COST RECORD JOURNAL BY  
FUNCTION BY TYPE: SEC

PAGE: 6 OF 21

298 FORT IGLOO ROAD	457 Rep/Mntn Bridges	209.25	27.51	236.76
	498 Stockpile Gravel	25.00	0.00	25.00
	511 Snow & Ice Removal	145.38	10.14	155.52
	513 Sanding icy surfaces	24.81	4.51	29.32
	518 Ck Roads>ice/snow	50.50	5.22	55.72
	522 Rpr/mtn/sign mailbox	66.38	7.20	73.57
			ADM COSTS ==>	446.21
	<b>TOTAL ==&gt;</b>	<b>6,078.46</b>	<b>350.91</b>	<b>6,429.37</b>
2A RNG NK/S.DSTY/E.ORAL	222 Cor metal culvert	9,392.69	683.55	10,076.25
	412 Blading/Grading	5,527.46	311.11	5,838.57
	415 Check Roads	304.85	35.57	340.41
	422 REPLACING-REGRAVEL	14,104.97	419.96	14,524.93
	426 HndlTraf/Det/Barricd	48.00	4.71	52.71
	442 Repair/Repl culvrt	2,751.66	256.45	3,008.10
	443 Clean for drainage	138.00	28.27	166.27
	446 Trees/shrbs remv/plt	487.50	39.44	526.94
	447 Mowing	604.00	41.80	645.80
	461 Move Equipment	256.13	29.43	285.55
	511 Snow & Ice Removal	857.17	42.80	899.97
	513 Sanding icy surfaces	256.75	13.93	270.68
	518 Ck Roads>ice/snow	134.07	13.38	147.45
	522 Rpr/mtn/sign mailbox	356.73	45.17	401.90
	526 911 signing	170.00	0.00	170.00
	912 REPAIR COSTS	90.00	0.00	90.00
			ADM COSTS ==>	0.00
		<b>TOTAL ==&gt;</b>	<b>35,479.97</b>	<b>1,965.58</b>
2B ORAL&WG FLATS LOOPS	312 Approaches	79.00	11.06	90.06
	412 Blading/Grading	4,733.89	227.60	4,961.49
	415 Check Roads	296.97	39.07	336.04
	422 REPLACING-REGRAVEL	13,500.84	335.81	13,836.65
	447 Mowing	1,518.50	103.67	1,622.17
	461 Move Equipment	66.00	13.52	79.52
	498 Stockpile Gravel	298.50	32.99	331.49
	511 Snow & Ice Removal	327.16	30.15	357.31
	518 Ck Roads>ice/snow	70.66	8.07	78.73
	522 Rpr/mtn/sign mailbox	25.00	0.00	25.00

FROMDATE : 01/01/2024

FALL RIVER COUNTY HIGHWAY DEPT

CREATE DATE: 03/13/2025

TODATE : 12/31/2024

PROJECT COST RECORD JOURNAL BY  
FUNCTION BY TYPE: SEC

PAGE: 7 OF 21

2B ORAL&WG FLATS LOOPS	526 911 signing	50.91	5.31	56.22
		ADM COSTS ===>		0.00
	<b>TOTAL ===&gt;</b>	<b>20,967.42</b>	<b>807.26</b>	<b>21,774.69</b>
2C HIGHLINE/EBERSOLE RD	412 Blading/Grading	2,390.85	156.60	2,547.45
	415 Check Roads	83.07	10.62	93.69
	422 REPLACING-REGRAVEL	17,202.89	598.66	17,801.55
	441 Cuts/fills/washouts	97.87	7.96	105.83
	447 Mowing	823.50	56.04	879.54
	518 Ck Roads>ice/snow	50.91	5.31	56.22
	522 Rpr/mtn/sign mailbox	76.82	10.62	87.44
		ADM COSTS ===>		0.00
	<b>TOTAL ===&gt;</b>	<b>20,725.90</b>	<b>845.81</b>	<b>21,571.71</b>
2D GRAVEL ROAD	411 Patching	25.91	5.31	31.22
	412 Blading/Grading	763.85	38.49	802.33
	415 Check Roads	61.33	4.88	66.21
	416 Repair X-ing	25.91	5.31	31.22
	417 Magnetic Sweeping	949.00	61.26	1,010.26
	441 Cuts/fills/washouts	93.91	5.31	99.22
	447 Mowing	127.75	8.25	136.00
	511 Snow & Ice Removal	194.13	7.66	201.79
		ADM COSTS ===>		0.00
<b>TOTAL ===&gt;</b>	<b>2,241.79</b>	<b>136.46</b>	<b>2,378.25</b>	
2E B.V. ROAD/MIN MTC	415 Check Roads	13.50	2.77	16.27
		ADM COSTS ===>		0.00
	<b>TOTAL ===&gt;</b>	<b>13.50</b>	<b>2.77</b>	<b>16.27</b>
2F SEC ROAD #2F/MIN MTC	412 Blading/Grading	144.00	10.45	154.45
	447 Mowing	146.00	9.42	155.42
		ADM COSTS ===>		0.00
	<b>TOTAL ===&gt;</b>	<b>290.00</b>	<b>19.87</b>	<b>309.87</b>
2G WILLIAMS PLACE ROAD	415 Check Roads	132.82	19.53	152.35
	422 REPLACING-REGRAVEL	4,984.21	185.24	5,169.45
		ADM COSTS ===>		0.00
	<b>TOTAL ===&gt;</b>	<b>5,117.03</b>	<b>204.77</b>	<b>5,321.80</b>
2H VIEW ROAD	412 Blading/Grading	390.55	26.54	417.09
	422 REPLACING-REGRAVEL	7,846.52	251.18	8,097.70
	447 Mowing	73.00	4.71	77.71



FROMDATE : 01/01/2024

FALL RIVER COUNTY HIGHWAY DEPT

CREATE DATE: 03/13/2025

TODATE : 12/31/2024

PROJECT COST RECORD JOURNAL BY  
FUNCTION BY TYPE: SEC

PAGE: 8 OF 21

2H VIEW ROAD	912 REPAIR COSTS	51.00	10.45	61.45
			ADM COSTS ==>	0.00
	<b>TOTAL ==&gt;</b>	<b>8,361.07</b>	<b>292.89</b>	<b>8,653.96</b>
2I DEAD TREE/SHARP TAIL	412 Blading/Grading	237.50	15.67	253.17
	447 Mowing	71.75	4.46	76.21
			ADM COSTS ==>	0.00
	<b>TOTAL ==&gt;</b>	<b>309.25</b>	<b>20.13</b>	<b>329.38</b>
2J LONGHORN ROAD	412 Blading/Grading	995.32	55.08	1,050.39
	415 Check Roads	176.73	25.97	202.70
	422 REPLACING-REGRAVEL	5,145.10	185.39	5,330.49
			ADM COSTS ==>	0.00
	<b>TOTAL ==&gt;</b>	<b>6,317.14</b>	<b>266.43</b>	<b>6,583.58</b>
2K S.BUTTE ROAD	412 Blading/Grading	965.26	72.38	1,037.64
	415 Check Roads	13.00	1.38	14.38
	447 Mowing	269.50	18.34	287.84
	461 Move Equipment	50.91	5.31	56.22
			ADM COSTS ==>	0.00
	<b>TOTAL ==&gt;</b>	<b>1,298.67</b>	<b>97.41</b>	<b>1,396.08</b>
385A W.END OAK TREE RD	415 Check Roads	93.91	5.31	99.22
	447 Mowing	36.00	2.25	38.25
			ADM COSTS ==>	0.00
	<b>TOTAL ==&gt;</b>	<b>129.91</b>	<b>7.56</b>	<b>137.47</b>
385B SHIRK CREEK RD	427 R.O.W Fencing	25.46	2.65	28.11
			ADM COSTS ==>	0.00
	<b>TOTAL ==&gt;</b>	<b>25.46</b>	<b>2.65</b>	<b>28.11</b>
385C SECONDARY ROAD #385C	427 R.O.W Fencing	25.46	2.65	28.11
			ADM COSTS ==>	0.00
	<b>TOTAL ==&gt;</b>	<b>25.46</b>	<b>2.65</b>	<b>28.11</b>
385D WILCOX RD/MIN MTC	427 R.O.W Fencing	25.46	2.65	28.11
			ADM COSTS ==>	0.00
	<b>TOTAL ==&gt;</b>	<b>25.46</b>	<b>2.65</b>	<b>28.11</b>
385E PLEASANT RIDGE RD	412 Blading/Grading	851.75	54.86	906.61
	415 Check Roads	111.25	13.83	125.08
	427 R.O.W Fencing	178.64	21.23	199.87
	511 Snow & Ice Removal	512.75	16.49	529.24
	518 Ck Roads>ice/snow	26.00	2.77	28.77
			ADM COSTS ==>	0.00

385E PLEASANT RIDGE RD			ADM COSTS ==>	0.00
	<b>TOTAL ==&gt;</b>	<b>1,680.39</b>	<b>109.18</b>	<b>1,789.57</b>
3B SECONDARY ROAD #3B	415 Check Roads	12.75	2.61	15.36
	447 Mowing	108.25	6.81	115.06
			ADM COSTS ==>	0.00
	<b>TOTAL ==&gt;</b>	<b>121.00</b>	<b>9.42</b>	<b>130.42</b>
3C SECONDARY ROAD #3C	412 Blading/Grading	187.00	10.45	197.45
	415 Check Roads	12.75	2.61	15.36
	447 Mowing	346.75	22.38	369.13
			ADM COSTS ==>	0.00
	<b>TOTAL ==&gt;</b>	<b>546.50</b>	<b>35.45</b>	<b>581.95</b>
3S SLIM B/CHADRON RD	223 Concrete culvert	67.35	0.00	67.35
	412 Blading/Grading	8,163.57	562.12	8,725.68
	415 Check Roads	1,086.63	48.02	1,134.65
	419 Othr Cst/fil ptholes	113.75	13.06	126.81
	422 REPLACING-REGRAVEL	1,185.88	60.62	1,246.50
	426 HndlTraf/Det/Barricd	119.50	7.07	126.57
	437 New Approaches	144.50	19.36	163.86
	441 Cuts/fills/washouts	79.00	11.06	90.06
	442 Repair/Repl culvrt	6,902.14	841.39	7,743.53
	443 Clean for drainage	1,970.00	194.64	2,164.64
	447 Mowing	1,919.81	126.99	2,046.80
	448 Debris removal	91.75	12.75	104.50
	459 Othr csts/cattle grd	27.88	2.23	30.10
	461 Move Equipment	251.00	32.99	283.99
	462 Control Burn/Ditches	76.37	7.96	84.33
	511 Snow & Ice Removal	2,574.75	109.20	2,683.95
	516 Open Inlet/Drain Chn	23.00	4.71	27.71
	518 Ck Roads>ice/snow	290.25	28.74	318.99
	522 Rpr/mtn/sign mailbox	240.75	33.96	274.71
	525 Detour/not new const	23.00	4.71	27.71
			ADM COSTS ==>	7,808.66
	<b>TOTAL ==&gt;</b>	<b>25,350.86</b>	<b>2,121.59</b>	<b>27,472.45</b>
416A LONE TREE ROAD	412 Blading/Grading	2,232.59	138.73	2,371.32
	414 Dust palliatives	69.00	14.14	83.14

FROMDATE : 01/01/2024

FALL RIVER COUNTY HIGHWAY DEPT

CREATE DATE: 03/13/2025

TODATE : 12/31/2024

PROJECT COST RECORD JOURNAL BY  
FUNCTION BY TYPE: SEC

PAGE: 10 OF 21

416A LONE TREE ROAD	415 Check Roads	177.06	22.19	199.25
	447 Mowing	159.00	14.14	173.14
	461 Move Equipment	34.50	4.51	39.01
	522 Rpr/mtn/sign mailbox	42.96	2.65	45.61
		ADM COSTS ===>		0.00
	<b>TOTAL ===&gt;</b>	<b>2,715.11</b>	<b>196.35</b>	<b>2,911.46</b>
416B ELM CREEK RD	412 Blading/Grading	333.55	26.54	360.09
	415 Check Roads	114.82	12.00	126.82
	422 REPLACING-REGRAVEL	10,456.90	185.02	10,641.92
	447 Mowing	159.00	14.14	173.14
	461 Move Equipment	46.75	4.46	51.21
		ADM COSTS ===>		0.00
	<b>TOTAL ===&gt;</b>	<b>11,111.02</b>	<b>242.16</b>	<b>11,353.18</b>
416C HIDDEN VALLEY/FAIRVIEW RD	412 Blading/Grading	2,975.90	213.78	3,189.68
	415 Check Roads	352.77	27.61	380.38
	416 Repair X-ing	64.78	13.27	78.05
	422 REPLACING-REGRAVEL	31,670.78	707.66	32,378.43
	442 Repair/Repl culvrt	218.50	44.77	263.27
	447 Mowing	438.00	28.27	466.27
	461 Move Equipment	122.25	9.68	131.93
	522 Rpr/mtn/sign mailbox	72.66	9.76	82.42
		ADM COSTS ===>		0.00
	<b>TOTAL ===&gt;</b>	<b>35,915.63</b>	<b>1,054.81</b>	<b>36,970.43</b>
416C-N IRRIGATION ROAD	412 Blading/Grading	187.82	10.62	198.44
	415 Check Roads	25.46	2.65	28.11
	422 REPLACING-REGRAVEL	913.12	175.56	1,088.68
	447 Mowing	46.00	9.42	55.42
	518 Ck Roads>ice/snow	25.46	2.65	28.11
	ADM COSTS ===>		0.00	
	<b>TOTAL ===&gt;</b>	<b>1,197.85</b>	<b>200.91</b>	<b>1,398.76</b>
416D BVR VALLEY/BVR CREEK	412 Blading/Grading	1,298.33	69.01	1,367.34
	415 Check Roads	378.16	50.59	428.74
	422 REPLACING-REGRAVEL	36,321.66	472.21	36,793.87
	447 Mowing	113.00	4.71	117.71
	511 Snow & Ice Removal	162.75	14.91	177.66
	522 Rpr/mtn/sign mailbox	12.50	0.00	12.50

FROMDATE : 01/01/2024

FALL RIVER COUNTY HIGHWAY DEPT

CREATE DATE: 03/13/2025

TODATE : 12/31/2024

PROJECT COST RECORD JOURNAL BY  
FUNCTION BY TYPE: SEC

PAGE: 11 OF 21

416D BVR VALLEY/BVR  
CREEK

		ADM COSTS ===>		0.00
	<b>TOTAL ===&gt;</b>	<b>38,286.40</b>	<b>611.43</b>	<b>38,897.82</b>

4A ANTELOPE LANE RD

412 Blading/Grading	910.13	60.77	970.90	
415 Check Roads	124.25	15.21	139.46	
417 Magnetic Sweeping	328.50	21.21	349.71	
447 Mowing	287.00	17.83	304.83	
461 Move Equipment	47.50	4.61	52.11	
518 Ck Roads>ice/snow	26.00	2.77	28.77	
		ADM COSTS ===>		0.00
	<b>TOTAL ===&gt;</b>	<b>1,723.38</b>	<b>122.39</b>	<b>1,845.77</b>

4B SHABRAM ROAD/MIN MTC

447 Mowing	93.50	8.91	102.41	
		ADM COSTS ===>		0.00
	<b>TOTAL ===&gt;</b>	<b>93.50</b>	<b>8.91</b>	<b>102.41</b>

4C HORSE HEAD ROAD

412 Blading/Grading	1,155.00	75.71	1,230.71	
415 Check Roads	246.25	41.49	287.74	
417 Magnetic Sweeping	292.00	18.85	310.85	
436 Reclm Grvl/Pull shld	329.75	19.36	349.11	
447 Mowing	380.50	26.74	407.24	
511 Snow & Ice Removal	219.75	7.07	226.82	
518 Ck Roads>ice/snow	45.75	5.53	51.28	
		ADM COSTS ===>		0.00
	<b>TOTAL ===&gt;</b>	<b>2,669.00</b>	<b>194.74</b>	<b>2,863.74</b>

4D S. BEEF CREEK RD

412 Blading/Grading	244.13	36.09	280.22	
417 Magnetic Sweeping	151.75	10.60	162.35	
447 Mowing	215.25	13.37	228.62	
		ADM COSTS ===>		0.00
	<b>TOTAL ===&gt;</b>	<b>611.13</b>	<b>60.06</b>	<b>671.19</b>

4S HARD SCRABBLE RD

412 Blading/Grading	2,555.75	194.79	2,750.54	
415 Check Roads	275.50	41.08	316.58	
417 Magnetic Sweeping	1,168.00	75.40	1,243.40	
447 Mowing	499.00	35.65	534.65	
511 Snow & Ice Removal	675.50	23.56	699.06	
518 Ck Roads>ice/snow	79.00	11.06	90.06	
522 Rpr/mtn/sign mailbox	192.00	18.85	210.85	
		ADM COSTS ===>		0.00

FROMDATE : 01/01/2024

FALL RIVER COUNTY HIGHWAY DEPT

CREATE DATE: 03/13/2025

TODATE : 12/31/2024

PROJECT COST RECORD JOURNAL BY  
FUNCTION BY TYPE: SEC

PAGE: 12 OF 21

4S HARD SCRABBLE RD	<b>TOTAL ==&gt;</b>	<b>5,444.75</b>	<b>400.40</b>	<b>5,845.15</b>
5A PART OF WYOMING ROAD	412 Blading/Grading	2,751.51	170.36	2,921.87
	415 Check Roads	105.50	15.21	120.71
	417 Magnetic Sweeping	1,033.50	68.33	1,101.83
	422 REPLACING-REGRAVEL	8,694.26	201.56	8,895.81
	518 Ck Roads>ice/snow	13.00	1.38	14.38
	522 Rpr/mtn/sign mailbox	120.00	11.78	131.78
			ADM COSTS ==>	0.00
	<b>TOTAL ==&gt;</b>	<b>12,717.76</b>	<b>468.63</b>	<b>13,186.39</b>
5B DUCK CREEK ROAD	412 Blading/Grading	1,107.00	59.62	1,166.62
	417 Magnetic Sweeping	230.50	16.49	246.99
	461 Move Equipment	24.25	4.97	29.22
			ADM COSTS ==>	0.00
	<b>TOTAL ==&gt;</b>	<b>1,361.75</b>	<b>81.08</b>	<b>1,442.83</b>
5C EAST ARDMORE ROAD	412 Blading/Grading	46.13	2.48	48.61
	417 Magnetic Sweeping	146.00	9.42	155.42
			ADM COSTS ==>	0.00
	<b>TOTAL ==&gt;</b>	<b>192.13</b>	<b>11.91</b>	<b>204.03</b>
5E HAT CREEK RD/PM-4.25	412 Blading/Grading	687.06	43.24	730.30
	415 Check Roads	39.50	5.53	45.03
	417 Magnetic Sweeping	292.00	18.85	310.85
	422 REPLACING-REGRAVEL	865.49	21.77	887.26
	441 Cuts/fills/washouts	12.50	0.00	12.50
	522 Rpr/mtn/sign mailbox	72.00	7.07	79.07
			ADM COSTS ==>	0.00
	<b>TOTAL ==&gt;</b>	<b>1,968.55</b>	<b>96.46</b>	<b>2,065.01</b>
5F DAKOTA LINE RD	412 Blading/Grading	470.01	33.60	503.61
	415 Check Roads	19.75	2.77	22.52
	417 Magnetic Sweeping	438.00	28.27	466.27
	441 Cuts/fills/washouts	13.50	2.77	16.27
	447 Mowing	287.00	17.83	304.83
			ADM COSTS ==>	0.00
	<b>TOTAL ==&gt;</b>	<b>1,228.26</b>	<b>85.23</b>	<b>1,313.49</b>

FROMDATE : 01/01/2024

FALL RIVER COUNTY HIGHWAY DEPT

CREATE DATE: 03/13/2025

TODATE : 12/31/2024

PROJECT COST RECORD JOURNAL BY  
FUNCTION BY TYPE: SEC

PAGE: 13 OF 21

5G E.END ARDMORE ROAD	412 Blading/Grading	383.38	36.75	420.13
	415 Check Roads	13.00	1.38	14.38
	417 Magnetic Sweeping	219.00	14.14	233.14
			ADM COSTS ===>	0.00
	<b>TOTAL ===&gt;</b>	<b>615.38</b>	<b>52.27</b>	<b>667.65</b>
5H HILLCREST RD/MIN MTC	417 Magnetic Sweeping	36.50	2.36	38.86
			ADM COSTS ===>	0.00
	<b>TOTAL ===&gt;</b>	<b>36.50</b>	<b>2.36</b>	<b>38.86</b>
5I HARMONY RD	412 Blading/Grading	92.25	4.97	97.22
	415 Check Roads	26.00	2.77	28.77
	417 Magnetic Sweeping	219.00	14.14	233.14
	447 Mowing	237.00	17.83	254.83
	511 Snow & Ice Removal	146.50	4.71	151.21
			ADM COSTS ===>	0.00
<b>TOTAL ===&gt;</b>	<b>720.75</b>	<b>44.41</b>	<b>765.16</b>	
6A PLAINS CREEK ROAD	415 Check Roads	144.50	12.81	157.31
	422 REPLACING-REGRAVEL	8,225.45	203.55	8,428.99
	447 Mowing	163.75	13.06	176.81
	516 Open Inlet/Drain Chn	114.25	18.29	132.54
	518 Ck Roads>ice/snow	25.25	2.61	27.86
	522 Rpr/mtn/sign mailbox	24.00	2.36	26.36
	911 Servicing Costs	86.75	4.46	91.21
			ADM COSTS ===>	0.00
<b>TOTAL ===&gt;</b>	<b>8,783.95</b>	<b>257.12</b>	<b>9,041.07</b>	
6B BITTER CREEK ROAD	412 Blading/Grading	283.64	21.23	304.87
	415 Check Roads	36.96	5.01	41.97
	522 Rpr/mtn/sign mailbox	85.91	5.31	91.22
			ADM COSTS ===>	0.00
<b>TOTAL ===&gt;</b>	<b>406.51</b>	<b>31.55</b>	<b>438.06</b>	
6C ASH CREEK RD	412 Blading/Grading	152.64	21.23	173.87
	417 Magnetic Sweeping	219.00	14.14	233.14
	447 Mowing	751.50	48.97	800.47
			ADM COSTS ===>	0.00
<b>TOTAL ===&gt;</b>	<b>1,123.14</b>	<b>84.34</b>	<b>1,207.48</b>	
6D W.SOUTHSHORE ROAD	412 Blading/Grading	307.64	21.23	328.87
	415 Check Roads	70.66	8.07	78.73

FROMDATE : 01/01/2024

FALL RIVER COUNTY HIGHWAY DEPT

CREATE DATE: 03/13/2025

TODATE : 12/31/2024

PROJECT COST RECORD JOURNAL BY  
FUNCTION BY TYPE: SEC

PAGE: 14 OF 21

6D W.SOUTHSHORE ROAD	447 Mowing	119.00	9.01	128.01
	461 Move Equipment	143.00	16.49	159.49
	511 Snow & Ice Removal	146.50	4.71	151.21
			ADM COSTS ===>	0.00
	<b>TOTAL ===&gt;</b>	<b>786.80</b>	<b>59.53</b>	<b>846.33</b>
6E PINE HILLS ROAD	412 Blading/Grading	9,023.00	67.92	9,090.92
	414 Dust palliatives	169.50	7.07	176.57
	415 Check Roads	67.50	5.22	72.72
	422 REPLACING-REGRAVEL	12,817.53	216.83	13,034.36
	447 Mowing	240.25	28.74	268.99
			ADM COSTS ===>	1,003.97
<b>TOTAL ===&gt;</b>	<b>22,317.78</b>	<b>325.78</b>	<b>22,643.56</b>	
6N LOOK OUT ROAD	412 Blading/Grading	1,220.25	65.31	1,285.56
	414 Dust palliatives	167.63	6.68	174.31
	415 Check Roads	80.13	6.53	86.66
	422 REPLACING-REGRAVEL	7,744.03	91.12	7,835.15
	447 Mowing	437.63	43.56	481.19
	518 Ck Roads>ice/snow	12.63	1.31	13.93
	522 Rpr/mtn/sign mailbox	25.25	2.61	27.86
			ADM COSTS ===>	17,179.03
<b>TOTAL ===&gt;</b>	<b>9,687.53</b>	<b>217.13</b>	<b>9,904.66</b>	
6S PLUM CREEK ROAD	412 Blading/Grading	590.25	39.18	629.43
	415 Check Roads	135.00	13.06	148.06
	422 REPLACING-REGRAVEL	6,285.29	122.52	6,407.82
	447 Mowing	489.25	36.21	525.46
	518 Ck Roads>ice/snow	25.25	2.61	27.86
	522 Rpr/mtn/sign mailbox	24.00	2.36	26.36
	526 911 signing	17.00	0.00	17.00
	912 REPAIR COSTS	37.50	0.00	37.50
			ADM COSTS ===>	0.00
<b>TOTAL ===&gt;</b>	<b>7,603.54</b>	<b>215.95</b>	<b>7,819.49</b>	
71B HIGHLAND ROAD	447 Mowing	71.75	4.46	76.21
			ADM COSTS ===>	0.00
	<b>TOTAL ===&gt;</b>	<b>71.75</b>	<b>4.46</b>	<b>76.21</b>
71C W.FLAG POLE ROAD	412 Blading/Grading	335.00	19.87	354.87
	415 Check Roads	25.46	2.65	28.11

FROMDATE : 01/01/2024

FALL RIVER COUNTY HIGHWAY DEPT

CREATE DATE: 03/13/2025

TODATE : 12/31/2024

PROJECT COST RECORD JOURNAL BY  
FUNCTION BY TYPE: SEC

PAGE: 15 OF 21

71C W.FLAG POLE ROAD	447 Mowing	204.00	14.91	218.91
			ADM COSTS ==>	0.00
	<b>TOTAL ==&gt;</b>	<b>564.46</b>	<b>37.43</b>	<b>601.89</b>
71D E.ROCKYFORD RD/PM-2	412 Blading/Grading	2,267.75	147.88	2,415.63
	415 Check Roads	97.21	10.95	108.16
	422 REPLACING-REGRAVEL	137.96	4.71	142.67
	437 New Approaches	33.25	5.53	38.78
	443 Clean for drainage	65.50	8.30	73.80
	447 Mowing	216.50	13.62	230.12
	448 Debris removal	90.25	13.37	103.62
	459 Othr csts/cattle grd	1,827.76	174.72	2,002.48
			ADM COSTS ==>	0.00
	<b>TOTAL ==&gt;</b>	<b>4,736.17</b>	<b>379.08</b>	<b>5,115.25</b>
71F HRSE CRK RD & LOOP	412 Blading/Grading	3,366.81	250.23	3,617.04
	415 Check Roads	828.00	38.77	866.77
	422 REPLACING-REGRAVEL	33,709.90	949.63	34,659.53
	437 New Approaches	39.50	5.53	45.03
	447 Mowing	667.50	44.56	712.06
	461 Move Equipment	420.38	28.35	448.73
	518 Ck Roads>ice/snow	19.75	2.77	22.52
	912 REPAIR COSTS	43.50	8.91	52.41
			ADM COSTS ==>	0.00
<b>TOTAL ==&gt;</b>	<b>39,095.34</b>	<b>1,328.75</b>	<b>40,424.09</b>	
71G DEAD END ROAD	417 Magnetic Sweeping	365.00	23.56	388.56
			ADM COSTS ==>	0.00
	<b>TOTAL ==&gt;</b>	<b>365.00</b>	<b>23.56</b>	<b>388.56</b>
79A SAND HILL RD	412 Blading/Grading	3,035.03	212.27	3,247.30
	446 Trees/shrbs remv/plt	99.00	15.67	114.67
	447 Mowing	380.50	26.74	407.24
			ADM COSTS ==>	0.00
<b>TOTAL ==&gt;</b>	<b>3,514.53</b>	<b>254.68</b>	<b>3,769.21</b>	
79B SAND ROAD	412 Blading/Grading	1,876.38	126.70	2,003.08
	415 Check Roads	25.25	2.61	27.86
	422 REPLACING-REGRAVEL	5,145.82	189.97	5,335.80
	447 Mowing	165.25	13.37	178.62
			ADM COSTS ==>	0.00



FROMDATE : 01/01/2024

FALL RIVER COUNTY HIGHWAY DEPT

CREATE DATE: 03/13/2025

TODATE : 12/31/2024

PROJECT COST RECORD JOURNAL BY  
FUNCTION BY TYPE: SEC

PAGE: 16 OF 21

79B SAND ROAD		<b>TOTAL ===&gt;</b>	<b>7,212.70</b>	<b>332.65</b>	<b>7,545.35</b>
79C E. SOUTHSORE ROAD	412 Blading/Grading		4,741.22	378.77	5,119.99
	415 Check Roads		241.60	29.01	270.61
	422 REPLACING-REGRAVEL		14,993.55	419.40	15,412.96
	427 R.O.W Fencing		89.78	13.27	103.05
	447 Mowing		452.25	31.19	483.44
	461 Move Equipment		12.50	0.00	12.50
	511 Snow & Ice Removal		46.00	2.36	48.36
	518 Ck Roads>ice/snow		50.91	5.31	56.22
	522 Rpr/mtn/sign mailbox		162.73	15.93	178.66
	912 REPAIR COSTS		187.94	38.51	226.44
				ADM COSTS ===>	0.00
		<b>TOTAL ===&gt;</b>	<b>20,978.47</b>	<b>933.75</b>	<b>21,912.22</b>
79E MILLIGAN RD/ MIN MTC	412 Blading/Grading		425.00	31.35	456.35
	447 Mowing		73.00	4.71	77.71
				ADM COSTS ===>	0.00
		<b>TOTAL ===&gt;</b>	<b>498.00</b>	<b>36.06</b>	<b>534.06</b>
79F CHEYENNE RIVER ROAD	412 Blading/Grading		92.82	10.62	103.44
	422 REPLACING-REGRAVEL		7,228.87	172.15	7,401.02
	442 Repair/Repl culvrt		662.25	31.19	693.44
	511 Snow & Ice Removal		630.01	24.54	654.55
	513 Sanding icy surfaces		44.50	4.51	49.01
				ADM COSTS ===>	0.00
		<b>TOTAL ===&gt;</b>	<b>8,658.45</b>	<b>243.01</b>	<b>8,901.46</b>
79G CROSSWINDS RD	412 Blading/Grading		1,199.42	83.06	1,282.48
	414 Dust palliatives		563.00	4.71	567.71
	422 REPLACING-REGRAVEL		10,006.20	253.65	10,259.85
	435 Reshaping		710.00	49.79	759.79
	461 Move Equipment		12.50	0.00	12.50
	522 Rpr/mtn/sign mailbox		34.25	4.46	38.71
				ADM COSTS ===>	0.00
		<b>TOTAL ===&gt;</b>	<b>12,525.37</b>	<b>395.67</b>	<b>12,921.04</b>

FROMDATE : 01/01/2024

FALL RIVER COUNTY HIGHWAY DEPT

CREATE DATE: 03/13/2025

TODATE : 12/31/2024

PROJECT COST RECORD JOURNAL BY  
FUNCTION BY TYPE: SEC

PAGE: 17 OF 21

7A ECKARD WELL ROAD	417 Magnetic Sweeping	36.50	2.36	38.86
	447 Mowing	219.00	14.14	233.14
	522 Rpr/mtn/sign mailbox	5.75	1.18	6.93
			ADM COSTS ===>	0.00
	<b>TOTAL ===&gt;</b>	<b>261.25</b>	<b>17.67</b>	<b>278.92</b>
7B CROW DAM& RUMFORD RD	412 Blading/Grading	2,305.50	139.12	2,444.62
	415 Check Roads	70.38	8.02	78.39
	447 Mowing	667.50	44.56	712.06
	461 Move Equipment	84.25	4.97	89.22
			ADM COSTS ===>	0.00
<b>TOTAL ===&gt;</b>	<b>3,127.63</b>	<b>196.66</b>	<b>3,324.29</b>	
7C SECONDARY ROAD #7C	417 Magnetic Sweeping	36.50	2.36	38.86
			ADM COSTS ===>	0.00
	<b>TOTAL ===&gt;</b>	<b>36.50</b>	<b>2.36</b>	<b>38.86</b>
87A OUTER EDGE CITY HS	411 Patching	135.50	22.64	158.14
	415 Check Roads	19.75	2.77	22.52
	416 Repair X-ing	69.00	14.14	83.14
	446 Trees/shrbs remv/plt	181.25	26.89	208.14
	447 Mowing	94.25	4.97	99.22
	511 Snow & Ice Removal	613.89	22.38	636.27
	513 Sanding icy surfaces	299.32	2.36	301.68
	518 Ck Roads>ice/snow	6.75	1.38	8.13
	519 Mix Salt Sand	6.25	0.00	6.25
			ADM COSTS ===>	0.00
<b>TOTAL ===&gt;</b>	<b>1,425.96</b>	<b>97.53</b>	<b>1,523.49</b>	
8S COALCREEK RD/PM-1.25	412 Blading/Grading	85.50	5.22	90.72
	415 Check Roads	81.25	9.68	90.93
	443 Clean for drainage	113.38	14.52	127.90
	447 Mowing	170.88	14.52	185.40
	518 Ck Roads>ice/snow	48.75	6.15	54.90
			ADM COSTS ===>	0.00
<b>TOTAL ===&gt;</b>	<b>499.75</b>	<b>50.09</b>	<b>549.84</b>	
9A MOSS AGATE RD/PM-4.5	412 Blading/Grading	327.25	18.29	345.54
	415 Check Roads	25.25	2.61	27.86
	447 Mowing	342.98	29.29	372.27
	518 Ck Roads>ice/snow	12.63	1.31	13.93

FROMDATE : 01/01/2024

FALL RIVER COUNTY HIGHWAY DEPT

CREATE DATE: 03/13/2025

TODATE : 12/31/2024

PROJECT COST RECORD JOURNAL BY  
FUNCTION BY TYPE: SEC

PAGE: 18 OF 21

9A MOSS AGATE RD/PM-4.5			ADM COSTS ==>	0.00
	<b>TOTAL ==&gt;</b>	<b>708.11</b>	<b>51.50</b>	<b>759.60</b>
FDR15 RED CANYN&CUTACROSS	412 Blading/Grading	3,813.57	273.64	4,087.20
	415 Check Roads	265.25	30.78	296.03
	416 Repair X-ing	34.50	7.07	41.57
	422 REPLACING-REGRAVEL	24,098.67	488.42	24,587.09
	441 Cuts/fills/washouts	289.25	28.02	317.27
	442 Repair/Repl culvrt	69.75	9.17	78.92
	443 Clean for drainage	2,300.01	180.30	2,480.31
	445 Walls/cribbing/riprp	842.50	52.25	894.75
	447 Mowing	780.75	60.08	840.83
	448 Debris removal	702.00	66.18	768.18
	461 Move Equipment	307.63	33.06	340.69
	516 Open Inlet/Drain Chn	2,617.13	288.81	2,905.94
	518 Ck Roads>ice/snow	99.13	10.07	109.19
	522 Rpr/mtn/sign mailbox	69.75	9.17	78.92
	912 REPAIR COSTS	69.75	10.45	80.20
			ADM COSTS ==>	0.00
	<b>TOTAL ==&gt;</b>	<b>36,359.62</b>	<b>1,547.46</b>	<b>37,907.08</b>
FDR16 ELBOW CANYON ROAD	412 Blading/Grading	2,853.00	172.41	3,025.41
	414 Dust palliatives	34.50	7.07	41.57
	415 Check Roads	264.66	33.74	298.40
	422 REPLACING-REGRAVEL	27,648.70	705.42	28,354.13
	446 Trees/shrbs remv/plt	53.75	9.17	62.92
	447 Mowing	2,335.66	153.80	2,489.45
	448 Debris removal	119.50	19.36	138.86
	461 Move Equipment	290.63	22.15	312.78
	518 Ck Roads>ice/snow	88.50	10.45	98.95
	519 Mix Salt Sand	34.50	7.07	41.57
	522 Rpr/mtn/sign mailbox	69.75	9.17	78.92
			ADM COSTS ==>	4,238.98
	<b>TOTAL ==&gt;</b>	<b>33,793.14</b>	<b>1,149.81</b>	<b>34,942.95</b>
FDR16A BURLINGTON DAM ROAD	412 Blading/Grading	730.50	47.02	777.52
	415 Check Roads	19.75	2.77	22.52
	422 REPLACING-REGRAVEL	1,822.18	48.84	1,871.02

FROMDATE : 01/01/2024

FALL RIVER COUNTY HIGHWAY DEPT

CREATE DATE: 03/13/2025

TODATE : 12/31/2024

PROJECT COST RECORD JOURNAL BY  
FUNCTION BY TYPE: SEC

PAGE: 19 OF 21

FDR16A BURLINGTON DAM ROAD	447 Mowing	575.00	28.17	603.17
	518 Ck Roads>ice/snow	12.63	1.31	13.93
			ADM COSTS ==>	0.00
	<b>TOTAL ==&gt;</b>	<b>3,160.05</b>	<b>128.10</b>	<b>3,288.16</b>
			<b>ADM TOTALS ==&gt;</b>	<b>34,469.63</b>
	<b>GRAND TOTAL ==&gt;</b>	<b>609,108.85</b>	<b>25,046.88</b>	<b>668,625.36</b>

FUNCTION	DIRECT	INDIRECT	TOTAL
222 Cor metal culvert	9,392.69	683.55	10,076.25
223 Concrete culvert	67.35	0.00	67.35
312 Approaches	79.00	11.06	90.06
411 Patching	263.41	46.29	309.70
412 Blading/Grading	108,704.66	6,718.74	115,423.40
414 Dust palliatives	1,462.63	53.81	1,516.43
415 Check Roads	8,606.35	901.87	9,508.22
416 Repair X-ing	194.19	39.79	233.97
417 Magnetic Sweeping	6,379.75	415.87	6,795.62
419 Othr Cst/fil ptholes	2,467.64	219.26	2,686.89
422 REPLACING-REGRAVEL	393,642.37	9,611.36	403,253.73
426 HndlTraf/Det/Barricd	167.50	11.78	179.28
427 R.O.W Fencing	344.78	42.47	387.25
431 Patching	1,261.73	0.00	1,261.73
435 Reshaping	710.00	49.79	759.79
436 Reclm Grvl/Pull shld	1,064.50	64.69	1,129.19
437 New Approaches	256.75	35.96	292.71
441 Cuts/fills/washouts	586.03	55.12	641.14
442 Repair/Repl culvrt	11,000.55	1,228.30	12,228.84
443 Clean for drainage	5,218.39	504.20	5,722.58
445 Walls/cribbing/riprp	842.50	52.25	894.75
446 Trees/shrbs remv/plt	821.50	91.17	912.67
447 Mowing	25,192.82	1,790.00	26,982.82
448 Debris removal	1,560.25	181.22	1,741.47
457 Rep/Mntn Bridges	209.25	27.51	236.76
459 Othr csts/cattle grd	2,590.64	274.27	2,864.90
461 Move Equipment	2,715.91	273.55	2,989.46
462 Control Burn/Ditches	76.37	7.96	84.33
498 Stockpile Gravel	383.00	42.41	425.41
511 Snow & Ice Removal	12,013.37	545.06	12,558.43
513 Sanding icy surfaces	2,146.35	94.20	2,240.55
516 Open Inlet/Drain Chn	2,754.38	311.81	3,066.18
518 Ck Roads>ice/snow	1,866.52	218.51	2,085.03
519 Mix Salt Sand	47.00	7.07	54.07
522 Rpr/mtn/sign mailbox	3,147.41	344.19	3,491.60

FROMDATE : 01/01/2024

FALL RIVER COUNTY HIGHWAY DEPT

CREATE DATE: 03/13/2025

TODATE : 12/31/2024

PROJECT COST RECORD JOURNAL BY  
FUNCTION BY TYPE: SEC

PAGE: 21 OF 21

525 Detour/not new const	23.00	4.71	27.71
526 911 signing	237.91	5.31	243.22
911 Servicing Costs	86.75	4.46	91.21
912 REPAIR COSTS	523.69	77.33	601.02
		<b>ADM TOTALS ==&gt;</b>	<b>34,469.63</b>
<b>TOTAL ==&gt;</b>	<b>609,108.85</b>	<b>25,046.88</b>	<b>668,625.36</b>

FROMDATE : 01/01/2024

FALL RIVER COUNTY HIGHWAY DEPT

CREATE DATE: 03/13/2025

TODATE : 12/31/2024

PROJECT COST RECORD JOURNAL BY  
FUNCTION BY TYPE: PRI

PAGE: 1 OF 10

PROJECT	FUNCTION	DIRECT	INDIRECT	TOTAL
1 ANGOSTURA/SMTHWK RD	115 Trf Study/Rd Counter	319.88	45.05	364.92
	218 Detours/Traffic Srvc	435.96	58.59	494.55
	336 Concrete Decks	426.55	26.54	453.09
	411 Patching	183.50	27.35	210.85
	412 Blading/Grading	19,923.82	1,356.71	21,280.53
	414 Dust palliatives	18,141.09	526.50	18,667.59
	415 Check Roads	757.27	93.69	850.95
	416 Repair X-ing	101.13	15.60	116.72
	422 REPLACING-REGRAVEL	74,890.89	1,531.18	76,422.07
	423 Scarifying/remixing	174.75	32.73	207.48
	426 HndlTraf/Det/Barricd	80.50	15.21	95.71
	435 Reshaping	1,782.25	139.68	1,921.93
	436 Reclm Grvl/Pull shld	970.53	74.28	1,044.81
	443 Clean for drainage	25.00	0.00	25.00
	447 Mowing	1,761.00	125.18	1,886.18
	461 Move Equipment	365.38	35.93	401.31
	511 Snow & Ice Removal	2,028.89	86.51	2,115.40
	513 Sanding icy surfaces	482.76	11.58	494.33
	518 Ck Roads>ice/snow	101.83	13.18	115.01
	519 Mix Salt Sand	6.25	0.00	6.25
	522 Rpr/mtn/sign mailbox	365.21	41.53	406.74
	525 Detour/not new const	1,015.38	131.20	1,146.58
		ADM COSTS ==>		
	<b>TOTAL ==&gt;</b>	<b>124,339.79</b>	<b>4,388.24</b>	<b>134,863.40</b>
12 PILGER MT/N.BG VALLE	115 Trf Study/Rd Counter	21.75	4.46	26.21
	412 Blading/Grading	9,144.01	572.45	9,716.46
	415 Check Roads	729.38	96.42	825.80
	422 REPLACING-REGRAVEL	50,752.78	1,081.13	51,833.92
	441 Cuts/fills/washouts	985.50	67.92	1,053.42
	442 Repair/Repl culvrt	1,114.50	64.44	1,178.94
	447 Mowing	466.51	34.11	500.62
	459 Othr csts/cattle grd	145.50	29.81	175.31
	461 Move Equipment	661.69	54.64	716.33
	518 Ck Roads>ice/snow	211.00	22.74	233.74
	522 Rpr/mtn/sign mailbox	82.38	11.76	94.13

FROMDATE : 01/01/2024

FALL RIVER COUNTY HIGHWAY DEPT

CREATE DATE: 03/13/2025

TODATE : 12/31/2024

PROJECT COST RECORD JOURNAL BY  
FUNCTION BY TYPE: PRI

PAGE: 2 OF 10

12 PILGER MT/N.BG VALLE	912 REPAIR COSTS	267.50	11.27	278.77
			ADM COSTS ==>	8,477.96
	<b>TOTAL ==&gt;</b>	<b>64,582.49</b>	<b>2,051.15</b>	<b>66,633.64</b>
14 HAY CNYN RD	412 Blading/Grading	4,537.02	365.01	4,902.03
	415 Check Roads	804.63	42.85	847.48
	422 REPLACING-REGRAVEL	9,651.87	221.61	9,873.49
	447 Mowing	401.50	25.92	427.42
	461 Move Equipment	176.00	8.91	184.91
	511 Snow & Ice Removal	138.50	9.94	148.44
	518 Ck Roads>ice/snow	58.16	8.07	66.23
	522 Rpr/mtn/sign mailbox	42.96	2.65	45.61
			ADM COSTS ==>	0.00
	<b>TOTAL ==&gt;</b>	<b>15,810.64</b>	<b>684.97</b>	<b>16,495.61</b>
17 ERSKINE RD	115 Trf Study/Rd Counter	21.75	4.46	26.21
	412 Blading/Grading	4,937.90	326.36	5,264.26
	414 Dust palliatives	1,325.50	82.57	1,408.07
	415 Check Roads	502.23	61.92	564.15
	422 REPLACING-REGRAVEL	19,335.54	313.57	19,649.11
	447 Mowing	405.50	26.74	432.24
	459 Othr csts/cattle grd	1,415.28	121.66	1,536.94
	461 Move Equipment	352.13	24.92	377.05
	511 Snow & Ice Removal	146.50	4.71	151.21
	518 Ck Roads>ice/snow	139.25	18.29	157.54
522 Rpr/mtn/sign mailbox	48.00	4.71	52.71	
		ADM COSTS ==>	0.00	
<b>TOTAL ==&gt;</b>	<b>28,629.58</b>	<b>989.90</b>	<b>29,619.48</b>	
18 ARGYLE ROAD	115 Trf Study/Rd Counter	43.50	8.91	52.41
	116 Consult engineering	212.75	43.59	256.34
	411 Patching	91.75	13.68	105.43
	412 Blading/Grading	4,945.31	323.58	5,268.89
	414 Dust palliatives	5,185.57	355.08	5,540.65
	415 Check Roads	710.62	83.11	793.73
	422 REPLACING-REGRAVEL	43,021.25	977.11	43,998.36
	436 Reclm Grvl/Pull shld	1,559.00	135.22	1,694.22
	437 New Approaches	79.00	11.06	90.06
	442 Repair/Repl culvrt	168.50	24.28	192.78



FROMDATE : 01/01/2024

FALL RIVER COUNTY HIGHWAY DEPT

CREATE DATE: 03/13/2025

TODATE : 12/31/2024

PROJECT COST RECORD JOURNAL BY  
FUNCTION BY TYPE: PRI

PAGE: 3 OF 10

18 ARGYLE ROAD	443 Clean for drainage	66.50	11.06	77.56
	447 Mowing	364.88	17.39	382.26
	461 Move Equipment	296.50	18.85	315.35
	498 Stockpile Gravel	800.00	0.00	800.00
	511 Snow & Ice Removal	1,483.26	68.82	1,552.07
	513 Sanding icy surfaces	599.07	11.78	610.85
	518 Ck Roads>ice/snow	119.08	14.15	133.23
	519 Mix Salt Sand	6.25	0.00	6.25
	522 Rpr/mtn/sign mailbox	25.00	0.00	25.00
	912 REPAIR COSTS	285.00	0.00	285.00
			ADM COSTS ---->	8,031.78
	<b>TOTAL ----&gt;</b>	<b>60,062.78</b>	<b>2,117.67</b>	<b>62,180.45</b>
19 LENNON SCHOOL RD	412 Blading/Grading	4,194.25	289.96	4,484.21
	415 Check Roads	139.25	14.44	153.69
	422 REPLACING-REGRAVEL	4,866.93	201.54	5,068.47
	447 Mowing	507.69	32.31	540.00
	518 Ck Roads>ice/snow	50.50	5.22	55.72
	522 Rpr/mtn/sign mailbox	88.50	10.45	98.95
			ADM COSTS ---->	0.00
	<b>TOTAL ----&gt;</b>	<b>9,847.12</b>	<b>553.93</b>	<b>10,401.05</b>
2 N. BUTTE ROAD	412 Blading/Grading	18,538.14	1,257.96	19,796.10
	414 Dust palliatives	702.50	37.90	740.40
	415 Check Roads	765.61	74.09	839.69
	422 REPLACING-REGRAVEL	15,623.13	287.65	15,910.78
	435 Reshaping	359.50	24.89	384.39
	436 Reclm Grvl/Pull shld	228.50	13.83	242.33
	442 Repair/Repl culvrt	886.63	42.33	928.96
	443 Clean for drainage	75.00	0.00	75.00
	447 Mowing	2,113.75	138.55	2,252.30
	511 Snow & Ice Removal	900.88	49.15	950.02
	513 Sanding icy surfaces	2.81	0.00	2.81
	518 Ck Roads>ice/snow	50.50	5.22	55.72
	522 Rpr/mtn/sign mailbox	226.87	24.97	251.83
			ADM COSTS ---->	0.00
		<b>TOTAL ----&gt;</b>	<b>40,473.80</b>	<b>1,956.56</b>
3292 INDIAN CANYON ROAD	412 Blading/Grading	9,095.25	572.40	9,667.65

FROMDATE : 01/01/2024

FALL RIVER COUNTY HIGHWAY DEPT

CREATE DATE: 03/13/2025

TODATE : 12/31/2024

PROJECT COST RECORD JOURNAL BY  
FUNCTION BY TYPE: PRI

PAGE: 4 OF 10

3292 INDIAN CANYON ROAD	415 Check Roads	486.00	61.41	547.41
	419 Othr Cst/fil ptholes	91.00	9.94	100.94
	422 REPLACING-REGRAVEL	37,351.75	821.08	38,172.83
	442 Repair/Repl culvrt	153.00	31.35	184.35
	447 Mowing	1,867.25	126.47	1,993.72
	461 Move Equipment	220.50	29.30	249.80
	511 Snow & Ice Removal	319.75	23.51	343.26
	518 Ck Roads>ice/snow	483.13	64.92	548.05
	522 Rpr/mtn/sign mailbox	312.00	30.63	342.63
	526 911 signing	17.00	0.00	17.00
		ADM COSTS ===>		0.00
	<b>TOTAL ===&gt;</b>	<b>50,396.63</b>	<b>1,771.01</b>	<b>52,167.63</b>
5 7>W.ARD/27>E.ARD RD	412 Blading/Grading	16,173.48	1,132.40	17,305.87
	415 Check Roads	675.50	91.02	766.52
	417 Magnetic Sweeping	4,271.63	295.11	4,566.74
	419 Othr Cst/fil ptholes	239.88	28.66	268.53
	422 REPLACING-REGRAVEL	47,744.19	1,209.81	48,954.00
	441 Cuts/fills/washouts	93.50	16.60	110.10
	442 Repair/Repl culvrt	102.00	18.34	120.34
	443 Clean for drainage	141.63	20.05	161.68
	447 Mowing	104.38	11.14	115.52
	448 Debris removal	26.00	2.77	28.77
	461 Move Equipment	545.13	45.10	590.23
	511 Snow & Ice Removal	1,070.64	39.16	1,109.80
	518 Ck Roads>ice/snow	191.25	27.66	218.91
	522 Rpr/mtn/sign mailbox	336.00	32.99	368.99
	911 Servicing Costs	86.75	4.46	91.21
		ADM COSTS ===>		0.00
	<b>TOTAL ===&gt;</b>	<b>71,801.95</b>	<b>2,975.25</b>	<b>74,777.20</b>
6 MAITLAND ROAD	115 Trf Study/Rd Counter	46.88	4.48	51.36
	412 Blading/Grading	18,326.24	1,136.70	19,462.94
	414 Dust palliatives	483.38	35.52	518.90
	415 Check Roads	848.05	93.23	941.28
	422 REPLACING-REGRAVEL	11,034.07	474.49	11,508.56
	443 Clean for drainage	39.50	5.53	45.03
	447 Mowing	3,056.00	200.99	3,256.99

FROMDATE : 01/01/2024

FALL RIVER COUNTY HIGHWAY DEPT

CREATE DATE: 03/13/2025

TODATE : 12/31/2024

PROJECT COST RECORD JOURNAL BY  
FUNCTION BY TYPE: PRI

PAGE: 5 OF 10

6 MAITLAND ROAD

448 Debris removal	34.25	4.46	38.71
461 Move Equipment	496.88	59.80	556.68
511 Snow & Ice Removal	607.25	22.79	630.04
518 Ck Roads>ice/snow	289.45	38.82	328.27
519 Mix Salt Sand	6.25	0.00	6.25
522 Rpr/mtn/sign mailbox	350.45	26.73	377.17
		ADM COSTS ==>	0.00
<b>TOTAL ==&gt;</b>	<b>35,618.64</b>	<b>2,103.54</b>	<b>37,722.18</b>

6291 W.ORAL/S.BUFFALO  
GAP

411 Patching	184.63	27.58	212.21
412 Blading/Grading	8,052.05	515.30	8,567.35
414 Dust palliatives	88.00	4.71	92.71
415 Check Roads	505.77	62.65	568.42
422 REPLACING-REGRAVEL	8,925.76	270.67	9,196.43
431 Patching	824.77	0.00	824.77
447 Mowing	2,474.75	170.52	2,645.27
448 Debris removal	46.25	9.01	55.26
461 Move Equipment	306.63	32.09	338.72
498 Stockpile Gravel	63.00	9.42	72.42
511 Snow & Ice Removal	2,887.75	145.98	3,033.73
513 Sanding icy surfaces	2,124.02	65.61	2,189.63
518 Ck Roads>ice/snow	211.44	24.11	235.55
519 Mix Salt Sand	6.25	0.00	6.25
522 Rpr/mtn/sign mailbox	454.88	46.07	500.95
		ADM COSTS ==>	0.00
<b>TOTAL ==&gt;</b>	<b>27,155.93</b>	<b>1,383.74</b>	<b>28,539.67</b>

6412 EDGEMONT ROAD

338 Signing & Railing	44.60	0.00	44.60
412 Blading/Grading	13,870.19	892.42	14,762.61
415 Check Roads	438.50	61.67	500.17
417 Magnetic Sweeping	1,237.00	89.53	1,326.53
422 REPLACING-REGRAVEL	27,102.30	759.50	27,861.80
435 Reshaping	1,140.75	84.26	1,225.01
443 Clean for drainage	26.50	4.15	30.65
447 Mowing	1,327.88	87.67	1,415.54
461 Move Equipment	690.50	54.70	745.20
513 Sanding icy surfaces	45.00	0.00	45.00
518 Ck Roads>ice/snow	158.00	22.13	180.13

FROMDATE : 01/01/2024

FALL RIVER COUNTY HIGHWAY DEPT

CREATE DATE: 03/13/2025

TODATE : 12/31/2024

PROJECT COST RECORD JOURNAL BY  
FUNCTION BY TYPE: PRI

PAGE: 6 OF 10

6412 EDGEMONT ROAD	522 Rpr/mtn/sign mailbox	437.75	43.59	481.34
	912 REPAIR COSTS	306.00	0.00	306.00
			ADM COSTS ==>	0.00
	<b>TOTAL ==&gt;</b>	<b>46,824.97</b>	<b>2,099.62</b>	<b>48,924.58</b>
6463 DEWEY ROAD	311 Structure Excavation	25.00	0.00	25.00
	412 Blading/Grading	19,223.95	1,382.15	20,606.09
	414 Dust palliatives	1,244.00	41.80	1,285.80
	415 Check Roads	635.00	77.60	712.60
	419 Othr Cst/fil ptholes	38.00	5.22	43.22
	422 REPLACING-REGRAVEL	103,823.27	1,901.48	105,724.75
	447 Mowing	1,915.38	120.45	2,035.82
	461 Move Equipment	307.00	16.29	323.29
	511 Snow & Ice Removal	453.63	28.22	481.85
	513 Sanding icy surfaces	5.63	0.00	5.63
	518 Ck Roads>ice/snow	274.25	30.58	304.83
	522 Rpr/mtn/sign mailbox	101.25	13.06	114.31
	526 911 signing	88.50	10.45	98.95
	911 Servicing Costs	65.00	0.00	65.00
			ADM COSTS ==>	8,031.76
	<b>TOTAL ==&gt;</b>	<b>128,199.84</b>	<b>3,627.30</b>	<b>131,827.14</b>
71A SHEPS CANYON RD H&B	115 Trf Study/Rd Counter	140.23	15.93	156.16
	412 Blading/Grading	5,346.72	363.31	5,710.03
	414 Dust palliatives	50,462.75	516.00	50,978.75
	415 Check Roads	510.75	35.39	546.14
	426 HndlTraf/Det/Barricd	13.50	2.77	16.27
	443 Clean for drainage	11.50	2.36	13.86
	447 Mowing	932.75	61.77	994.52
	461 Move Equipment	103.50	9.42	112.92
	511 Snow & Ice Removal	628.88	25.79	654.66
	513 Sanding icy surfaces	22.50	0.00	22.50
	518 Ck Roads>ice/snow	182.88	28.50	211.38
	522 Rpr/mtn/sign mailbox	24.25	4.97	29.22
			ADM COSTS ==>	5,131.40
<b>TOTAL ==&gt;</b>	<b>58,380.20</b>	<b>1,066.21</b>	<b>59,446.41</b>	
79 OLD HIGHWAY 79	213 Overhaul/reshape rd	84,267.82	11.06	84,278.88
	312 Approaches	92.50	13.83	106.33

FROMDATE : 01/01/2024

FALL RIVER COUNTY HIGHWAY DEPT

CREATE DATE: 03/13/2025

TODATE : 12/31/2024

PROJECT COST RECORD JOURNAL BY  
FUNCTION BY TYPE: PRI

PAGE: 7 OF 10

79 OLD HIGHWAY 79

411 Patching	192.07	23.99	216.06
412 Blading/Grading	15,328.01	955.84	16,283.85
414 Dust palliatives	7,816.65	311.02	8,127.67
415 Check Roads	1,043.50	124.47	1,167.97
416 Repair X-ing	150.00	0.00	150.00
419 Othr Cst/fil ptholes	2,138.13	210.14	2,348.26
422 REPLACING-REGRAVEL	90,044.60	2,779.54	92,824.14
423 Scarifying/remixing	160.00	27.66	187.66
427 R.O.W Fencing	101.82	10.62	112.44
435 Reshaping	2,218.20	142.13	2,360.33
436 Reclm Grvl/Pull shld	34.25	4.46	38.71
437 New Approaches	39.50	5.53	45.03
441 Cuts/fills/washouts	270.98	37.59	308.57
443 Clean for drainage	113.00	8.30	121.30
446 Trees/shrbs remv/plt	27.00	5.53	32.53
447 Mowing	2,756.25	188.24	2,944.49
461 Move Equipment	332.56	24.60	357.16
498 Stockpile Gravel	2,507.25	137.22	2,644.47
511 Snow & Ice Removal	3,164.76	96.19	3,260.95
513 Sanding icy surfaces	817.83	18.44	836.27
518 Ck Roads>ice/snow	239.66	29.89	269.55
519 Mix Salt Sand	6.25	0.00	6.25
522 Rpr/mtn/sign mailbox	416.24	47.89	464.13
912 REPAIR COSTS	574.88	37.88	612.75
		ADM COSTS ==>	18,740.78
	<b>TOTAL ==&gt;</b>	<b>214,853.70</b>	<b>5,252.05</b>
			<b>220,105.75</b>

8 W=FDL CREEK/S=COFFEE

412 Blading/Grading	5,172.25	374.17	5,546.42
415 Check Roads	480.00	59.93	539.93
419 Othr Cst/fil ptholes	113.75	13.06	126.81
422 REPLACING-REGRAVEL	63,483.63	1,836.41	65,320.04
447 Mowing	1,335.00	104.49	1,439.49
459 Othr csts/cattle grd	476.00	84.72	560.72
461 Move Equipment	973.50	65.87	1,039.37
498 Stockpile Gravel	1,097.25	78.83	1,176.08
518 Ck Roads>ice/snow	186.00	22.74	208.74
522 Rpr/mtn/sign mailbox	96.00	9.42	105.42

FROMDATE : 01/01/2024

FALL RIVER COUNTY HIGHWAY DEPT

CREATE DATE: 03/13/2025

TODATE : 12/31/2024

PROJECT COST RECORD JOURNAL BY  
FUNCTION BY TYPE: PRI

PAGE: 8 OF 10

8 W=FDL CREEK/S=COFFEE

ADM COSTS ====> 0.00

**TOTAL ====> 73,413.38 2,649.65 76,063.03**

9 RIVER ROAD

412 Blading/Grading 10,677.57 677.47 11,355.03

415 Check Roads 177.88 18.52 196.39

422 REPLACING-REGRAVEL 1,143.50 60.34 1,203.84

435 Reshaping 518.25 54.86 573.11

441 Cuts/fills/washouts 713.50 92.92 806.42

442 Repair/Repl culvrt 2,404.69 220.70 2,625.38

447 Mowing 2,407.78 225.43 2,633.21

459 Othr csts/cattle grd 832.80 100.85 933.65

461 Move Equipment 686.00 9.42 695.42

518 Ck Roads>ice/snow 50.50 5.22 55.72

522 Rpr/mtn/sign mailbox 89.75 5.22 94.97

ADM COSTS ====> 0.00

**TOTAL ====> 19,702.21 1,470.96 21,173.16**

**ADM TOTALS ====> 85,225.90**

**GRAND TOTAL ====> 1,070,093.63 37,141.75 1,192,461.28**

FUNCTION	DIRECT	INDIRECT	TOTAL
115 Trf Study/Rd Counter	593.98	83.28	677.26
116 Consult engineering	212.75	43.59	256.34
213 Overhaul/reshape rd	84,267.82	11.06	84,278.88
218 Detours/Traffic Srvc	435.96	58.59	494.55
311 Structure Excavation	25.00	0.00	25.00
312 Approaches	92.50	13.83	106.33
336 Concrete Decks	426.55	26.54	453.09
338 Signing & Railing	44.60	0.00	44.60
411 Patching	651.95	92.60	744.54
412 Blading/Grading	187,486.14	12,494.19	199,980.32
414 Dust palliatives	85,449.44	1,911.10	87,360.54
415 Check Roads	10,209.92	1,152.41	11,362.33
416 Repair X-ing	251.13	15.60	266.72
417 Magnetic Sweeping	5,508.63	384.65	5,893.28
419 Othr Cst/fil ptholes	2,620.75	267.02	2,887.77
422 REPLACING-REGRAVEL	608,795.48	14,727.12	623,522.59
423 Scarifying/remixing	334.75	60.39	395.14
426 HndlTraf/Det/Barricd	94.00	17.98	111.98
427 R.O.W Fencing	101.82	10.62	112.44
431 Patching	824.77	0.00	824.77
435 Reshaping	6,018.95	445.82	6,464.77
436 Reclm Grvl/Pull shld	2,792.28	227.79	3,020.07
437 New Approaches	118.50	16.60	135.10
441 Cuts/fills/washouts	2,063.48	215.02	2,278.50
442 Repair/Repl culvrt	4,829.31	401.43	5,230.74
443 Clean for drainage	498.63	51.45	550.08
446 Trees/shrbs remv/plt	27.00	5.53	32.53
447 Mowing	24,198.22	1,697.37	25,895.59
448 Debris removal	106.50	16.24	122.74
459 Othr csts/cattle grd	2,869.58	337.04	3,206.62
461 Move Equipment	6,513.88	489.86	7,003.74
498 Stockpile Gravel	4,467.50	225.48	4,692.98
511 Snow & Ice Removal	13,830.68	600.78	14,431.45
513 Sanding icy surfaces	4,099.61	107.41	4,207.03
518 Ck Roads>ice/snow	2,996.87	381.47	3,378.33

FROMDATE : 01/01/2024

FALL RIVER COUNTY HIGHWAY DEPT

CREATE DATE: 03/13/2025

TODATE : 12/31/2024

PROJECT COST RECORD JOURNAL BY  
FUNCTION BY TYPE: PRI

PAGE: 10 OF 10

519 Mix Salt Sand	31.25	0.00	31.25
522 Rpr/mtn/sign mailbox	3,497.47	356.65	3,854.12
525 Detour/not new const	1,015.38	131.20	1,146.58
526 911 signing	105.50	10.45	115.95
911 Servicing Costs	151.75	4.46	156.21
912 REPAIR COSTS	1,433.38	49.15	1,482.52
		<b>ADM TOTALS ==&gt;</b>	<b>85,225.90</b>
<b>TOTAL ==&gt;</b>	<b>1,070,093.63</b>	<b>37,141.75</b>	<b>1,192,461.28</b>





3/6/25, 8:57 AM

IMG\_1128.jpg



---

 **Natural Resources Conservation Service**  
U.S. DEPARTMENT OF AGRICULTURE

South Dakota State Office  
200 Fourth Street SW, Room 203  
Huron, SD 57350

February 21, 2025

Mr. Joe Falkenburg  
PO Box 69  
Edgemont, South Dakota 57735

Dear Commissioner:

The Natural Resources Conservation Service (NRCS) is a federal agency that works with private landowners to help them conserve, maintain, and improve their natural resources. The NRCS emphasizes voluntary, science-based conservation; technical assistance; partnerships; incentive-based programs; and cooperative problem solving at the community level. Over the next several years, the NRCS will continue to assist landowners, in South Dakota (SD), with conservation activities as part of its conservation program delivery throughout SD. Project activities may include such things as pipelines and watering tanks for livestock, animal waste storage facilities, planning shelterbelts or riparian buffers, grassed waterways, terraces, and other conservation practices.

As a federal agency, the NRCS complies with the National Historic Preservation Act (NHPA) of 1966 and is required to consider historic properties (i.e., buildings, structures, archeological sites, objects, and districts eligible or listed in the National Register of Historic Places) that may be affected by projects receiving technical and/or financial assistance from NRCS. To assist the NRCS in identifying historic properties (also called cultural resources) that may be important to different communities or groups, we are soliciting public involvement and consultation on our activities. We are asking you to please respond to this letter if your organization has specific concerns related to the location of historic properties. While the SD NRCS has professional cultural resource specialists on staff and each project with the potential to affect historic properties is checked for known archeological sites and national or state register listed properties, local communities are often aware of other resources in their rural areas that have not been previously identified or recorded. If your organization does have locations of cultural resource concerns, please identify these general areas on a town or county map and return the map to our office within 45 days of receipt of this letter. As our office reviews future program applications, the NRCS will identify activities that have the potential to affect historic properties and consult with any identified interested public official on a project-by-project basis. If you have no specific concerns, you may either notify our office of such in writing or simply not respond to this letter. Also, please let the NRCS know if you are aware of any other interested individuals or groups. For your information, similar letters have also been sent to each county commission.

Please visit our Web site at <http://www.sd.nrcs.usda.gov/> to find out more about our agency and programs.

---

Please contact Paige Olson, State Cultural Resources Specialist, at (605) 301-3443 or [paige.olson@usda.gov](mailto:paige.olson@usda.gov) if you have any further questions or concerns. Thank you for your cooperation in protecting our important resources.

Sincerely,

A handwritten signature in black ink, appearing to read "Anthony M. Sunseri". The signature is written in a cursive style with a horizontal line underneath the name.

**ANTHONY M. SUNSERI**  
*State Conservationist*

cc:

Jessica Michalski, SRC, NRCS, Huron SO  
Paige Olson, SCRS, NRCS, Pierre FSO  
Brenda Shierts, CRS, NRCS, Sturgis FO

FR CO

All State's Attorneys and Deputies:

The 2025 State's Attorneys' Conference is scheduled for May 1-2, 2025, at The Lodge at Deadwood. On April 30, 2025, there will also be a one-day training session on *DUI Trial Techniques*. Please save the date and plan to attend.

The *DUI Trial Techniques* training session on April 30<sup>th</sup> will be paid using NHTSA funding through the Department of Public Safety, Office of Highway Safety. This funding will allow per diem and one night hotel expense on April 29<sup>th</sup> for State's Attorneys attending the training on April 30<sup>th</sup>. **Highway Safety will reimburse the county directly for each attendee. Invoices and instructions will be available at the registration table.** Included with this letter is a link to the registration form for the *DUI Trial Techniques* training. [DUI Registration Conference Link](#)

The State's Attorneys' Conference on May 1-2 will be paid by Law Enforcement Training. Law Enforcement Training will **reimburse the county directly for no more than two attendees per county** for two nights hotel @ \$110/night plus allowable taxes on April 30 – May 1, and meal per diem @ \$40/day on May 1-2. Reimbursements will be based on attendance roster signatures for each day. All reimbursements will be at current state rates approved by the South Dakota Board of Finance. Here is the link to the State's Attorneys' Conference registration form. [State's Attorney Conference Registration Form](#)

We kindly request you complete both Google Doc registration forms by March 21, 2025.

A block of rooms has been reserved at The Lodge. Each attendee is responsible for making and securing room reservations. Reservations must be made by March 28, 2025, as the block of rooms will expire on that day. Please contact The Lodge at (605) 584-4800 to secure your room.

As in the past, State's Attorneys' conference handouts will be accessible on our website just prior to the conference. We ask that you print them off or access them on a laptop during the conference. Copies of material will not be available or handed out during the conference. More details along with the finalized agenda will follow in April.

If you have any questions or concerns, please reach out to Lindsey Evans at [Lindsey.Evans@state.sd.us](mailto:Lindsey.Evans@state.sd.us).

Sincerely,



Marty J. Jackley  
Attorney General

## CHAPTER 7-16A

## PUBLIC DEFENDER

- [7-16A-1](#) Establishment of office by commissioners' resolution.
- [7-16A-2](#) Joint office established by two or more counties.
- [7-16A-3](#) Provisions by establishing board for office.
- [7-16A-4](#) Advisory committee to be established--Composition--Chairman.
- [7-16A-5](#) Appointment and qualifications of public defender.
- [7-16A-6](#) Employment of personnel for defender's office--Administration.
- [7-16A-7](#) Qualifications of assistant defenders--Assignment to cases.
- [7-16A-8](#) Facilities and supplies for office.
- [7-16A-9](#) Persons to be represented--Services provided.
- [7-16A-10](#) Proceedings in which indigents represented--Co-counsel.
- [7-16A-11](#) Representation restricted to state courts--Federal matters excepted--Compensation paid by federal courts.
- [7-16A-12](#) Assignment of substitute when public defender unable to perform--Duty--Compensation of substitute.
- [7-16A-13](#) Extension to representation in municipal ordinance violations--Contributions by municipality.
- [7-16A-14](#) Payment of expenses directly related to **particular** cases.
- [7-16A-15](#) **Apportionment** of expenses not otherwise allocable.
- [7-16A-16](#) County appropriations for public defender fund--Administration and accounting for fund--Private contributions.
- [7-16A-17](#) Monthly report to circuit court for setting liens--Disposition of funds collected from liens.
- [7-16A-18](#) Records maintained by public defender--Annual report to advisory committee.

**7-16A-1. Establishment of office by commissioners' resolution.**

Each board of county commissioners may, by resolution, establish and maintain an office of public defender to fulfill the requirements of § [23A-40-7](#).

**Source:** SL 1978, ch 152, § 1.

**7-16A-2. Joint office established by two or more counties.**

If a board of county commissioners elects to establish and maintain an office of public defender, it may join with the board of county commissioners of one or more other counties to jointly establish and maintain an office of public defender. In that case the participating counties shall be treated for the purpose of this chapter as if they were one county.

**Source:** SL 1978, ch 152, § 6.

**7-16A-3. Provisions by establishing board for office.**

If a board of county commissioners elects to establish an office of public defender it shall:

- (1) Prescribe the qualifications of the public defender, the term of office and the rate of annual compensation; and
- (2) Provide for the establishment, maintenance, and support of the office.

**Source:** SL 1978, ch 152, § 8.

**7-16A-9. Persons to be represented--Services provided.**

A public defender shall represent any indigent person who is:

- (1) Detained by a law enforcement officer without charge or judicial process;
- (2) Arrested or charged with having committed a crime or of being a juvenile delinquent;
- (3) Detained under a conviction of a crime, juvenile delinquency, or mental illness; or
- (4) Otherwise an indigent person entitled to representation by law, to the same extent as a person having his or her own counsel, and with the necessary services and facilities of representation, including investigation and other preparation, authorized or approved by a court.

**Source:** SL 1978, ch 152, § 9; SL 2016, ch 44, § 35.

**7-16A-10. Proceedings in which indigents represented--Co-counsel.**

An indigent person who is entitled to be represented by a public defender shall be counseled and defended at all stages of the matter beginning with the earliest time when a person providing his own counsel would be entitled to be represented by an attorney, including the revocation of probation or parole, appeal, and any other post-conviction proceeding that the public defender and the indigent consider appropriate, unless the court in which a proceeding is brought determines that it is not a proceeding that a reasonable person with adequate means would be willing to bring at his own expense. Representation may include co-counsel or associate counsel in appropriate cases.

**Source:** SL 1978, ch 152, § 9.

**7-16A-11. Representation restricted to state courts--Federal matters excepted--Compensation paid by federal courts.**

This chapter applies only to representation in the courts of this state, except that it does not prohibit a public defender from representing an indigent person in an action seeking relief other than the recovery of money damages in a federal court of the United States, if;

- (1) The matter arises out of or is related to an action pending or recently pending in a court of criminal jurisdiction of the state;
- (2) Representation is under a plan of the United States District Court as required by the Criminal Justice Act of 1964 (18 U.S.C. § 3006A) and is approved by the board of county commissioners;
- (3) The matter arises out of an action pending in the juvenile courts of this state; or
- (4) The matter arises out of an action pending for the involuntary commitment to the state hospital.

Any compensation paid by a federal court of the United States shall be placed directly in the public defender fund.

**Source:** SL 1978, ch 152, § 16.

**7-16A-12. Assignment of substitute when public defender unable to perform--Duty--Compensation of substitute.**

If at any stage of proceedings, including appeal or other post-judgment proceedings, a public defender is unable to represent an indigent person, because of a conflict of interest or other good cause, the court concerned may assign a substitute private attorney to represent the indigent person.

A substitute attorney has the same duty to the indigent person as the public defender for whom the attorney is substituted. The court shall prescribe reasonable compensation for the substitute attorney and approve the

**Source:** SL 1978, ch 152, § 15.

**7-16A-18. Records maintained by public defender--Annual report to advisory committee.**

A public defender shall keep appropriate records for each indigent person represented by the public defender's office. A public defender shall submit an annual report to the advisory committee showing the number of indigent persons represented by the public defender's office, the crimes involved, the outcome of each case, and the expenditures made in carrying out the public defender's responsibilities.

**Source:** SL 1978, ch 152, § 17; SL 2016, ch 44, § 37.



DEPARTMENT 153 - COURT APPT ATTORNEY (FR)

FUND	ACCOUNT	NAME	DATE	SOURCE	REFERENCE	DESCRIPTION	AMOUNT
ACCOUNT 4260 - 4260.153 COURT APPOINTED ATTORNEY			BUDGET:		225,000.00	YTD BALANCE:	
10100	426.0	HUSTEAD LAW OFFICE,	1/04/24	AP	0000081520	HEPPNER, KAYLEE DAWN/H180977019	350.22
10100	426.0	HUSTEAD LAW OFFICE,	1/04/24	AP	0000081520	GUERUE, CHELSEA/CR22H180977019	490.48
10100	426.0	SKINNER, MATTHEW L.	1/04/24	AP	0000081532	HALL, FOREST/CR23-31S321577029	768.35
10100	426.0	SOUTHERN HILLS LAW P	1/04/24	AP	0000081533	KELLY, KRISTEN/CR23-S381077030	653.36
10100	426.0	SOUTHERN HILLS LAW P	1/04/24	AP	0000081533	BURDETTE, COREENA/CRS381077030	389.98
10100	426.0	HUSTEAD LAW OFFICE,	1/18/24	AP	0000081579	PEET, ERIC/CR120-259H180977075	668.35
10100	426.0	HUSTEAD LAW OFFICE,	1/18/24	AP	0000081579	HEART, KEISHA/CR123-H180977075	641.71
10100	426.0	HUSTEAD LAW OFFICE,	1/18/24	AP	0000081579	STOKER, LAWRENCE/CR1H180977075	710.37
10100	426.0	HUSTEAD LAW OFFICE,	2/01/24	AP	0000081650	BURLING, THOMAS/CR23H180977145	990.15
10100	426.0	HUSTEAD LAW OFFICE,	2/01/24	AP	0000081650	BLACK FEATHER, JOEY/H180977145	842.34
10100	426.0	HUSTEAD LAW OFFICE,	2/01/24	AP	0000081650	RICHARDS, ZACHARIAH/H180977145	374.72
10100	426.0	HUSTEAD LAW OFFICE,	2/01/24	AP	0000081650	ATWOOD, ATREJO/CR23-H180977145	1,028.78
10100	426.0	HUSTEAD LAW OFFICE,	2/01/24	AP	0000081650	YELLOW THUNDER, KIMBH180977145	656.34
10100	426.0	HUSTEAD LAW OFFICE,	2/01/24	AP	0000081650	STRAND, TIMOTHY/CR23H180977145	192.54
10100	426.0	HUSTEAD LAW OFFICE,	2/01/24	AP	0000081650	HOOD, JONITA/CR23-34H180977145	269.94
10100	426.0	O'NEILL, JUSTIN	2/01/24	AP	0000081658	WILDBERGER, OLIVIA R0049477153	432.38
10100	426.0	O'NEILL, JUSTIN	2/01/24	AP	0000081658	BURDETTE, JOEL/CR23-0049477153	638.20
10100	426.0	O'NEILL, JUSTIN	2/01/24	AP	0000081658	HENDRICKS, CHAD T/CRO049477153	512.64
10100	426.0	SKINNER, MATTHEW L.	2/01/24	AP	0000081665	CLIENT, NAME/CR1 S321577160	398.70
10100	426.0	SKINNER, MATTHEW L.	2/01/24	AP	9000077160	VOID S321577160	398.70CR
10100	426.0	HUSTEAD LAW OFFICE,	2/15/24	AP	0000081719	LIEN, CODY R/23CRI23H180977212	264.50
10100	426.0	HUSTEAD LAW OFFICE,	2/15/24	AP	0000081719	PENCE, NICHOLE/23CRIH180977212	696.37
10100	426.0	HUSTEAD LAW OFFICE,	2/15/24	AP	0000081719	LIEN, CODY R/23CRI23H180977212	367.62
10100	426.0	SOUTHERN HILLS LAW P	2/15/24	AP	0000081743	LILLIE, VICTORIA/23CS381077236	1,460.36
10100	426.0	SOUTHERN HILLS LAW P	2/15/24	AP	0000081743	CROW, MICHELL/23CRI1S381077236	869.70
10100	426.0	SOUTHERN HILLS LAW P	2/15/24	AP	0000081743	PARKER, STEVEN/23CRIS381077236	1,269.83
10100	426.0	SOUTHERN HILLS LAW P	2/15/24	AP	0000081743	MCGIRR, MATTHEW R/23S381077236	399.16
10100	426.0	SOUTHERN HILLS LAW P	2/15/24	AP	0000081743	RICHTERS, SAMANTHA/2S381077236	468.70
10100	426.0	COLBATH & SPERLICH,	3/07/24	AP	0000081815	JEFFREY, CARRIE PATRC137577308	251.40
10100	426.0	COLBATH & SPERLICH,	3/07/24	AP	0000081815	JEFFREY, CARRIE PATRC137577308	229.70
10100	426.0	COLBATH & SPERLICH,	3/07/24	AP	0000081815	JEFFREY, CARRIE PATRC137577308	389.40
10100	426.0	COLBATH & SPERLICH,	3/07/24	AP	0000081815	LOPEZ-PRELLE, BETTY C137577308	373.00
10100	426.0	HUSTEAD LAW OFFICE,	3/07/24	AP	0000081836	LOVE, JOHN RALPH FRAH180977328	1,026.83
10100	426.0	HUSTEAD LAW OFFICE,	3/07/24	AP	0000081836	DUBRAY, TORI/CR22-23H180977328	531.76
10100	426.0	HUSTEAD LAW OFFICE,	3/07/24	AP	0000081836	QUICK BEAR, ZANE/CR2H180977328	219.35
10100	426.0	JUENGER LAW FIRM LLC	3/07/24	AP	0000081837	CROSS DOG, HARLEY/CRJ100577329	804.10
10100	426.0	JUENGER LAW FIRM LLC	3/07/24	AP	0000081837	HATTEN, JACOB/CR23-4J100577329	844.10
10100	426.0	O'NEILL, JUSTIN	3/07/24	AP	0000081849	HE CROW, FILMORE WAY0049477341	258.75
10100	426.0	O'NEILL, JUSTIN	3/07/24	AP	0000081849	JAMES, RYAN SILAS/CRO049477341	306.31
10100	426.0	O'NEILL, JUSTIN	3/07/24	AP	0000081849	BURNING BREAST, LUKE0049477341	388.13
10100	426.0	O'NEILL, JUSTIN	3/07/24	AP	0000081849	MARTINEZ, JOHNNY/CR20049477341	607.60
10100	426.0	O'NEILL, JUSTIN	3/07/24	AP	0000081849	THOMPSON, ANTHONY LAO049477341	316.25
10100	426.0	SKINNER, MATTHEW L.	3/07/24	AP	0000081865	AFRAID OF BEAR, FRED321577356	860.45
10100	426.0	SKINNER, MATTHEW L.	3/07/24	AP	0000081865	FROST, FRITZ/CR22-16S321577356	792.60
10100	426.0	SKINNER, MATTHEW L.	3/07/24	AP	0000081865	GARNIER, ANGELINA/CRS321577356	768.55
10100	426.0	SKINNER, MATTHEW L.	3/07/24	AP	0000081865	BALLASY, GALEN/MAG23S321577356	89.65
10100	426.0	SKINNER, MATTHEW L.	3/07/24	AP	0000081865	BALLASY, GALEN/CR23-S321577356	1,107.10

## DEPARTMENT 153 - COURT APPT ATTORNEY (FR)

FUND	ACCOUNT	NAME	DATE	SOURCE	REFERENCE	DESCRIPTION	AMOUNT
10100	426.0	SKINNER, MATTHEW L.	3/07/24	AP	0000081865	COURNOYER, PRECIOUS/S321577356	250.25
10100	426.0	SKINNER, MATTHEW L.	3/07/24	AP	0000081865	COURNOYER, PRECIOUS/S321577356	557.45
10100	426.0	SKINNER, MATTHEW L.	3/07/24	AP	0000081865	COURNOYER, PRECIOUS/S321577356	682.05
10100	426.0	SKINNER, MATTHEW L.	3/07/24	AP	0000081865	COURNOYER, PRECIOUS/S321577356	722.95
10100	426.0	SOUTHERN HILLS LAW P	3/07/24	AP	0000081867	HANSEN, CANDIDA/CR23S381077358	911.14
10100	426.0	SOUTHERN HILLS LAW P	3/07/24	AP	0000081867	MINNICK, ANDREW JOHNS381077358	6,978.09
10100	426.0	COLBATH & SPERLICH,	3/21/24	AP	0000081901	LARSON, ELLIOT/23CRIC137577418	391.63
10100	426.0	COLBATH & SPERLICH,	3/21/24	AP	0000081901	RODRIGUEZ, DENNIE/23C137577418	1,482.80
10100	426.0	COLBATH & SPERLICH,	3/21/24	AP	0000081901	KNIGHT, LEXI MARIE/2C137577418	360.00
10100	426.0	COLBATH & SPERLICH,	3/21/24	AP	0000081901	GARMANY, WENDY/23JUV137577418	332.60
10100	426.0	HUSTEAD LAW OFFICE,	3/21/24	AP	0000081920	PATTON, KATERI/23CRIH180977436	384.67
10100	426.0	O'NEILL, JUSTIN	3/21/24	AP	0000081928	YOUNG BLOOD, KYLIE/20049477444	541.42
10100	426.0	O'NEILL, JUSTIN	3/21/24	AP	0000081928	YELLOW ELK, JAYCE/230049477444	495.68
10100	426.0	O'NEILL, JUSTIN	3/21/24	AP	0000081928	PAWNEE LEGGINS BREWEO049477444	1,104.90
10100	426.0	SOUTHERN HILLS LAW P	3/21/24	AP	0000081937	DUFUR, KRISTEN LEIGHS381077453	653.82
10100	426.0	HUSTEAD LAW OFFICE,	4/04/24	AP	0000082052	GRAHAM, DANIELLE/CR1H180977570	755.74
10100	426.0	SOUTHERN HILLS LAW P	4/04/24	AP	0000082078	BEAR EAGLE, MARLA/23S381077595	311.16
10100	426.0	COLBATH & SPERLICH,	4/18/24	AP	0000082127	LOPEZ-PRELLE, BETTY C137577642	1,234.95
10100	426.0	COLBATH & SPERLICH,	4/18/24	AP	0000082127	STOLDT, EMILY/CR23-3C137577642	513.10
10100	426.0	COLBATH & SPERLICH,	4/18/24	AP	0000082127	BEAR RUNNER, DEANNA/C137577642	289.50
10100	426.0	COLBATH & SPERLICH,	4/18/24	AP	0000082127	PABLO, DELLA ROSE/MAC137577642	747.06
10100	426.0	COLBATH & SPERLICH,	4/18/24	AP	0000082127	PATTON, DOUGLAS B/MAC137577642	289.50
10100	426.0	HUSTEAD LAW OFFICE,	4/18/24	AP	0000082139	TRUEBLOOD, VALAURA/CH180977653	616.60
10100	426.0	HUSTEAD LAW OFFICE,	4/18/24	AP	0000082139	FIELDER, REX WAYNE/CH180977653	1,008.87
10100	426.0	HUSTEAD LAW OFFICE,	4/18/24	AP	0000082139	RICHTER, JESSE/CR21-H180977653	10,000.00
10100	426.0	HUSTEAD LAW OFFICE,	4/18/24	AP	0000082139	PALMIER, ALYSSA/MAG2H180977653	811.93
10100	426.0	O'NEILL, JUSTIN	4/18/24	AP	0000082147	ANDERSON, JOEL/CR23-0049477661	1,154.69
10100	426.0	O'NEILL, JUSTIN	4/18/24	AP	0000082147	STONE, CLAY MICHAEL/0049477661	1,034.89
10100	426.0	O'NEILL, JUSTIN	4/18/24	AP	0000082147	PARMELY, ROBERT/CR240049477661	440.80
10100	426.0	O'NEILL, JUSTIN	4/18/24	AP	0000082147	HARTY, RONALD DALE/CO049477661	512.68
10100	426.0	SOUTHERN HILLS LAW P	5/01/24	AP	0000082197	GORSKI, LISA/CR24-14S381077712	220.32
10100	426.0	SOUTHERN HILLS LAW P	5/01/24	AP	0000082197	MOREHOUSE, KELLY/CR2S381077712	386.16
10100	426.0	COLBATH & SPERLICH,	5/17/24	AP	0000082280	BEAR RUNNER, DEANNA/C137577825	500.00
10100	426.0	COLBATH & SPERLICH,	5/17/24	AP	0000082280	MOREN, KEVIN/CR24-56C137577825	305.20
10100	426.0	COLBATH & SPERLICH,	5/17/24	AP	0000082280	QUINN, JAYDEN/CR23-2C137577825	205.50
10100	426.0	HUSTEAD LAW OFFICE,	5/17/24	AP	0000082288	CHAFIN, ERIK/CR23-29H180977833	674.50
10100	426.0	HUSTEAD LAW OFFICE,	5/17/24	AP	0000082288	SANSOUCIE, JESSICA/CH180977833	876.70
10100	426.0	SKINNER, MATTHEW L.	5/17/24	AP	0000082293	SMITH, TALEN CARTER/S321577838	1,015.95
10100	426.0	SKINNER, MATTHEW L.	5/17/24	AP	0000082293	LANG, JON/CR24-42 S321577838	549.50
10100	426.0	SOUTHERN HILLS LAW P	5/17/24	AP	0000082294	SCHMIT, TROY CHRISTOS381077839	520.82
10100	426.0	SOUTHERN HILLS LAW P	5/17/24	AP	0000082294	BEAR ROBE, BYRON/CR2S381077839	1,129.42
10100	426.0	SOUTHERN HILLS LAW P	5/17/24	AP	0000082294	MCFATE, TROY MICHAELS381077839	596.76
10100	426.0	SOUTHERN HILLS LAW P	5/17/24	AP	0000082294	HILDEBRAND, SARAH JES381077839	836.38
10100	426.0	SOUTHERN HILLS LAW P	5/17/24	AP	0000082294	MARTIN, AARON/CR21-1S381077839	916.82
10100	426.0	SOUTHERN HILLS LAW P	5/17/24	AP	0000082294	JONES, MARCEL ALEXANS381077839	2,129.66
10100	426.0	SOUTHERN HILLS LAW P	5/17/24	AP	0000082294	NEW HOLY, LEWIS/CR23S381077839	1,806.18
10100	426.0	SOUTHERN HILLS LAW P	5/17/24	AP	0000082294	EDWARDS, MISTI/CR23-S381077839	746.08
10100	426.0	SOUTHERN HILLS LAW P	5/17/24	AP	0000082294	ROUBIDEAUX, JOEL/CR2S381077839	626.78
10100	426.0	SOUTHERN HILLS LAW P	5/17/24	AP	0000082294	ROUBIDEAUX, JOEL/CR2S381077839	1,167.82
10100	426.0	SOUTHERN HILLS LAW P	5/17/24	AP	0000082294	SHAW, RYAN/CR23-345 S381077839	956.84
10100	426.0	SOUTHERN HILLS LAW P	5/17/24	AP	0000082294	JOHNSON, DIANNA S381077839	775.90

## DEPARTMENT 153 - COURT APPT ATTORNEY (FR)

FUND	ACCOUNT	NAME	DATE	SOURCE	REFERENCE	DESCRIPTION	AMOUNT
10100	426.0	COLBATH & SPERLICH,	6/06/24	AP	0000082336	HURT, JUSTICE/CR24-1C137577881	1,353.80
10100	426.0	COLBATH & SPERLICH,	6/06/24	AP	0000082336	DUBRAY, BOBBY/CR23-3C137577881	982.50
10100	426.0	COLBATH & SPERLICH,	6/06/24	AP	0000082336	JEFFREY, CARRIE PATRC137577881	759.10
10100	426.0	COLBATH & SPERLICH,	6/06/24	AP	0000082336	PAYNE, BRANDON/CR23-C137577881	163.20
10100	426.0	COLBATH & SPERLICH,	6/06/24	AP	0000082336	PAYNE, BRANDON/CR23-C137577881	478.70
10100	426.0	COLBATH & SPERLICH,	6/06/24	AP	0000082336	LOPEZ-PRELLE, BETTY C137577881	679.41
10100	426.0	COLBATH & SPERLICH,	6/06/24	AP	0000082336	JANIS, CLEVE JR/CR23C137577881	609.80
10100	426.0	HUSTEAD LAW OFFICE,	6/06/24	AP	0000082350	MATHIS, BENJAMIN/CR2H180977895	930.79
10100	426.0	HUSTEAD LAW OFFICE,	6/06/24	AP	0000082350	CUPP, STEPHAN B/CR24H180977895	262.35
10100	426.0	HUSTEAD LAW OFFICE,	6/06/24	AP	0000082350	DEPERSA, FLOWER/CR24H180977895	1,253.44
10100	426.0	HUSTEAD LAW OFFICE,	6/06/24	AP	0000082350	ESSLINGER, SARA/CR23H180977895	844.29
10100	426.0	HUSTEAD LAW OFFICE,	6/06/24	AP	0000082350	BURLING, THOMAS/CR23H180977895	867.26
10100	426.0	HUSTEAD LAW OFFICE,	6/06/24	AP	0000082350	STANTON, STACEY JAMEH180977895	1,049.12
10100	426.0	HUSTEAD LAW OFFICE,	6/06/24	AP	0000082350	ROWELL, RAIN EDWARD/H180977895	1,054.72
10100	426.0	SOUTHERN HILLS LAW P	6/06/24	AP	0000082375	STANLEY, JACKLYN LOUS381077920	677.82
10100	426.0	SOUTHERN HILLS LAW P	6/06/24	AP	0000082375	MOIT, KAYDEN/MAG23-1S381077920	2,952.64
10100	426.0	SCHAEFER, AUSTIN	6/26/24	AP	0000082474	2024 CAA CONTRACT SRS053478053	4,379.76
10100	426.0		6/30/24	JE	V# 78053	RURAL ATTY PAID FROM CAA LINE	4,379.76CR
10100	426.0		6/30/24	JE	V# 78317	S/B MI TRAINING NOT CAA	60.00CR
10100	426.0	COLBATH & SPERLICH,	7/02/24	AP	0000082483	QUICKE, MINDI/CR24-7C137578064	1,000.60
10100	426.0	COLBATH & SPERLICH,	7/02/24	AP	0000082483	QUICKE, MINDI/CR23-4C137578064	1,020.50
10100	426.0	COLBATH & SPERLICH,	7/02/24	AP	0000082483	HORTON, MARK KENDALLC137578064	476.50
10100	426.0	COLBATH & SPERLICH,	7/02/24	AP	0000082483	HORTON, MARK KENDALLC137578064	785.90
10100	426.0	COLBATH & SPERLICH,	7/02/24	AP	0000082483	MANSON-MALDONADO, TUC137578064	473.00
10100	426.0	HUSTEAD LAW OFFICE,	7/02/24	AP	0000082503	PENCE, NICHOLE/CR23-H180978084	1,878.30
10100	426.0	SOUTHERN HILLS LAW P	7/02/24	AP	0000082531	EDWARDS, MISTI/CR23-S381078111	598.16
10100	426.0	SOUTHERN HILLS LAW P	7/02/24	AP	0000082531	HILL, STEPHANIE/CR23S381078111	2,572.76
10100	426.0	SOUTHERN HILLS LAW P	7/02/24	AP	0000082531	MILES, RICHARD/CR24-S381078111	204.66
10100	426.0	SOUTHERN HILLS LAW P	7/02/24	AP	0000082531	FONTAINE, BETH RENES381078111	250.66
10100	426.0		7/18/24	MR	0000018902	SHAW, SHARA MARIE /CAAF EXP	110.00CR
10100	426.0	COLBATH & SPERLICH,	7/18/24	AP	0000082628	SCHUH, KATHY JEAN/CRC137578230	835.64
10100	426.0	COLBATH & SPERLICH,	7/18/24	AP	0000082628	ZIMIGA, CHEVY/23CRI2C137578230	166.50
10100	426.0	COLBATH & SPERLICH,	7/18/24	AP	0000082628	BRITT, DAYANERA/23CRC137578230	767.00
10100	426.0	COLBATH & SPERLICH,	7/18/24	AP	0000082628	WILDE, CURTIS DUANE/C137578230	699.50
10100	426.0	COLBATH & SPERLICH,	7/18/24	AP	0000082628	ZIMIGA, CHEVY/23CRI-C137578230	255.00
10100	426.0	COLBATH & SPERLICH,	7/18/24	AP	0000082628	CARLSON, TIFFANY/23CC137578230	611.50
10100	426.0	HUSTEAD LAW OFFICE,	7/18/24	AP	0000082638	EPPLER, CARMEN ELAINH180978240	454.48
10100	426.0	HUSTEAD LAW OFFICE,	7/18/24	AP	0000082638	KNIFE, LANE F/23CRI2H180978240	573.34
10100	426.0	HUSTEAD LAW OFFICE,	7/18/24	AP	0000082638	ALDRIDGE, ADAM/23CRIH180978240	755.49
10100	426.0	HUSTEAD LAW OFFICE,	7/18/24	AP	0000082638	BLINDMAN, GEORGETTE/H180978240	466.76
10100	426.0	HUSTEAD LAW OFFICE,	7/18/24	AP	0000082638	TAIL, ETHAN/23CRI24-H180978240	677.92
10100	426.0	JUENGER LAW FIRM LLC	7/18/24	AP	0000082639	STEWART, LORI MICHELJ100578241	1,546.50
10100	426.0	JUENGER LAW FIRM LLC	7/18/24	AP	0000082639	GRUNEWALD, MAX DEVONJ100578241	637.00
10100	426.0	SOUTHERN HILLS LAW P	7/18/24	AP	0000082660	CUPSA, LIVIU/23MAG23S381078262	1,227.94
10100	426.0	SOUTHERN HILLS LAW P	7/18/24	AP	0000082660	ESSLINGER, KEVIN/23CS381078262	2,095.20
10100	426.0	COLBATH & SPERLICH,	8/01/24	AP	0000082711	JANIS, RACHEL A/23CRC137578307	1,331.27
10100	426.0	COLBATH & SPERLICH,	8/01/24	AP	0000082711	BARGER, DAVID/23CRI2C137578307	1,053.80
10100	426.0	HUSTEAD LAW OFFICE,	8/01/24	AP	0000082721	MENTAL ILLNESS BOARDH180978317	60.00
10100	426.0	O'NEILL, JUSTIN	8/01/24	AP	0000082729	DREAMING BEAR, WALTEO049478325	804.78
10100	426.0	O'NEILL, JUSTIN	8/01/24	AP	0000082729	HANES, BRENNEN DANILO049478325	1,413.35
10100	426.0	HUSTEAD LAW OFFICE,	8/15/24	AP	0000082798	PENCE, NICHOLE/CR23-H180978392	1,122.76

## DEPARTMENT 153 - COURT APPT ATTORNEY (FR)

FUND	ACCOUNT	NAME	DATE	SOURCE	REFERENCE	DESCRIPTION	AMOUNT
10100	426.0	HUSTEAD LAW OFFICE,	8/15/24	AP	0000082798	ROWELL, RAIN EDWARD/H180978392	572.44
10100	426.0	HUSTEAD LAW OFFICE,	8/15/24	AP	0000082798	HEART, KEISHA DAWN/CH180978392	2,120.66
10100	426.0	HUSTEAD LAW OFFICE,	8/15/24	AP	0000082798	BRIGGS, AMBER/CR24-9H180978392	2,178.65
10100	426.0	SOUTHERN HILLS LAW P	8/15/24	AP	0000082801	DUBRAY, TORI/CR22-23S381078395	537.86
10100	426.0	SOUTHERN HILLS LAW P	8/15/24	AP	0000082801	GAUDINO, SARA/CR20-4S381078395	987.26
10100	426.0	SOUTHERN HILLS LAW P	8/15/24	AP	0000082801	MORALES, JAMES/CR22-S381078395	226.82
10100	426.0	SOUTHERN HILLS LAW P	8/15/24	AP	0000082801	PETERS, JOE/CR24-157S381078395	449.86
10100	426.0	COLBATH & SPERLICH,	9/05/24	AP	0000082878	STRAND, SHEENA/CR23-C137578477	1,793.30
10100	426.0	COLBATH & SPERLICH,	9/05/24	AP	0000082878	HARVEY, THOMAS JR/CRC137578477	1,365.44
10100	426.0	COLBATH & SPERLICH,	9/05/24	AP	0000082878	CARNIE, LAURA JANE/CC137578477	1,196.30
10100	426.0	COLBATH & SPERLICH,	9/05/24	AP	0000082878	PATTON, DOUGLAS B/CRC137578477	1,879.40
10100	426.0	COLBATH & SPERLICH,	9/05/24	AP	0000082878	EMMERT, MARCUS/CR24-C137578477	344.40
10100	426.0	COLBATH & SPERLICH,	9/05/24	AP	0000082878	PUSHING, KRISTEN/CR2C137578477	322.50
10100	426.0	COLBATH & SPERLICH,	9/05/24	AP	0000082878	HANES, BRENNEN DANILC137578477	320.30
10100	426.0	COLBATH & SPERLICH,	9/05/24	AP	0000082878	HARRISON, GARY WILLIC137578477	311.10
10100	426.0	DUFFY LAW FIRM, PROF	9/05/24	AP	0000082879	FOSTER, FRANK REED/CD151778478	724.50
10100	426.0	HUSTEAD LAW OFFICE,	9/05/24	AP	0000082888	MORRISON, SIERRA JADH180978487	244.93
10100	426.0	HUSTEAD LAW OFFICE,	9/05/24	AP	0000082888	ROSALES, TANISHA KAEH180978487	584.26
10100	426.0	SKINNER, MATTHEW L.	9/05/24	AP	0000082918	RHOOD, JEREMIAH/CR24S321578517	897.20
10100	426.0	SOUTHERN HILLS LAW P	9/19/24	AP	0000083011	JONES, TASHEENA/23MAS381078606	523.30
10100	426.0	COLBATH & SPERLICH,	10/03/24	AP	0000083053	RESSLER, DOTTIE/CR24C137578669	3,943.96
10100	426.0	COLBATH & SPERLICH,	10/03/24	AP	0000083053	HORTON, MARK/CR23-39C137578669	842.23
10100	426.0	COLBATH & SPERLICH,	10/03/24	AP	0000083053	LARSON, ELLIOT/23-33C137578669	616.64
10100	426.0	HUSTEAD LAW OFFICE,	10/03/24	AP	0000083064	BRIGGS, AMBER LYNN/CH180978680	834.76
10100	426.0	HUSTEAD LAW OFFICE,	10/03/24	AP	0000083064	WALKER, TAYLOR/CR23-H180978680	649.01
10100	426.0	HUSTEAD LAW OFFICE,	10/03/24	AP	0000083064	BUSH, JAYTHEN/CR24-2H180978680	495.91
10100	426.0	HUSTEAD LAW OFFICE,	10/03/24	AP	0000083064	BLACKELK-CHASEALONE,H180978680	350.53
10100	426.0	HUSTEAD LAW OFFICE,	10/03/24	AP	0000083064	VANDERMOLEN, DESTINYH180978680	589.41
10100	426.0	HUSTEAD LAW OFFICE,	10/03/24	AP	0000083064	TAYLOR, CHRISTOPHER/H180978680	553.41
10100	426.0	SOUTHERN HILLS LAW P	10/03/24	AP	0000083084	GARCIA, VALENTINA/MAS381078700	494.50
10100	426.0	SOUTHERN HILLS LAW P	10/03/24	AP	0000083084	POURIER, UNPO MANI/CS381078700	197.72
10100	426.0	SOUTHERN HILLS LAW P	10/03/24	AP	0000083084	POURIER, UNPO MANI/MS381078700	498.48
10100	426.0	SOUTHERN HILLS LAW P	10/03/24	AP	0000083084	POURIER, UNPO MANI/CS381078700	258.62
10100	426.0	SOUTHERN HILLS LAW P	10/03/24	AP	0000083084	ATWOOD, ATREJO REECES381078700	872.55
10100	426.0	SOUTHERN HILLS LAW P	10/03/24	AP	0000083084	ATWOOD, ATREJO REECES381078700	957.04
10100	426.0	SOUTHERN HILLS LAW P	10/03/24	AP	0000083084	MOREN, KYLE/CR24-186S381078700	136.74
10100	426.0	COLBATH & SPERLICH,	10/17/24	AP	0000083133	HARVEY, THOMAS JR/CRC137578778	1,249.70
10100	426.0	COLBATH & SPERLICH,	10/17/24	AP	0000083133	VOIGT, MICHAEL/CR24-C137578778	584.48
10100	426.0	COLBATH & SPERLICH,	10/17/24	AP	0000083133	HARDY, DAKOTA/CR24-1C137578778	301.50
10100	426.0	COLBATH & SPERLICH,	10/17/24	AP	0000083133	WILSON, RACHEL/24-19C137578778	597.90
10100	426.0	COLBATH & SPERLICH,	10/17/24	AP	0000083133	HAMAR, RANDALL/CR24-C137578778	1,047.00
10100	426.0	COLBATH & SPERLICH,	10/17/24	AP	0000083133	ZIMIGA, CHEVY/CR24-1C137578778	291.00
10100	426.0	COLBATH & SPERLICH,	10/17/24	AP	0000083133	BAKER, JOHN/CR24-244C137578778	439.70
10100	426.0	COLBATH & SPERLICH,	10/17/24	AP	0000083133	MUNDORF, JACOB/CR24-C137578778	932.50
10100	426.0	COLBATH & SPERLICH,	10/17/24	AP	0000083133	FLODQUIST, SHAWN/CR2C137578778	486.10
10100	426.0	COLBATH & SPERLICH,	10/17/24	AP	0000083133	MCCULLOCH, DOUGLAS/CC137578778	1,528.90
10100	426.0	COLBATH & SPERLICH,	10/17/24	AP	0000083133	PETTIT, WILLIAM/CR24C137578778	507.60
10100	426.0	COLBATH & SPERLICH,	10/17/24	AP	0000083133	MARTIN, BENJAMIN/CR2C137578778	272.60
10100	426.0	SOUTHERN HILLS LAW P	10/17/24	AP	0000083134	PEREZ, ANTHONY RAY/CS381078779	1,193.42
10100	426.0	SOUTHERN HILLS LAW P	10/17/24	AP	0000083134	HERMAN, LEO ALAN/CR2S381078779	1,096.10
10100	426.0	SOUTHERN HILLS LAW P	10/17/24	AP	0000083134	BLUELEGS, DAKOTA/CR2S381078779	436.72

## DEPARTMENT 153 - COURT APPT ATTORNEY (FR)

FUND	ACCOUNT	NAME	DATE	SOURCE	REFERENCE	DESCRIPTION	AMOUNT
10100	426.0	SOUTHERN HILLS LAW P	10/17/24	AP	0000083134	BREWER, JODY/CR23-11S381078779	728.23
10100	426.0	HUSTEAD LAW OFFICE,	11/07/24	AP	0000083199	ECOFFEY, AUTUMN ROSEH180978842	1,625.29
10100	426.0	HUSTEAD LAW OFFICE,	11/07/24	AP	0000083199	ECOFFEY, AUTUMN ROSEH180978842	782.38
10100	426.0	HUSTEAD LAW OFFICE,	11/07/24	AP	0000083199	EAGLE, MIGUEL JOSEPHH180978842	1,015.89
10100	426.0	HUSTEAD LAW OFFICE,	11/07/24	AP	0000083199	MILLS, JESSICA/MAG24H180978842	912.46
10100	426.0	SOUTHERN HILLS LAW P	11/07/24	AP	0000083222	GARCIA, VALENTINA/MAS381078865	552.00
10100	426.0	SOUTHERN HILLS LAW P	11/07/24	AP	0000083222	SNEESBY, CYNTHIA/CRIS381078865	535.66
10100	426.0	SOUTHERN HILLS LAW P	11/07/24	AP	0000083222	MILES, RICHARD/CR124S381078865	316.00
10100	426.0	SOUTHERN HILLS LAW P	11/07/24	AP	0000083222	RAVE, ARTHUR DALE/CRS381078865	734.23
10100	426.0	SOUTHERN HILLS LAW P	11/07/24	AP	0000083222	LOE, ROBERT/CR124-24S381078865	391.68
10100	426.0	SOUTHERN HILLS LAW P	11/07/24	AP	0000083222	GRABOWSKI, JUSTIN/CRS381078865	1,713.16
10100	426.0	SOUTHERN HILLS LAW P	11/07/24	AP	0000083222	WALKER, TYLER E/CR12S381078865	1,339.16
10100	426.0	SOUTHERN HILLS LAW P	11/07/24	AP	0000083222	BREWER, JODI/CR124-3S381078865	280.48
10100	426.0	COLBATH & SPERLICH,	12/05/24	AP	0000083430	HARSH, MARJORIE/23CRC137579098	648.60
10100	426.0	COLBATH & SPERLICH,	12/05/24	AP	0000083430	RODRIGUEZ, SHEAR JASC137579098	513.40
10100	426.0	COLBATH & SPERLICH,	12/05/24	AP	0000083430	MORAN, NICHOLE/23CRIC137579098	255.00
10100	426.0	COLBATH & SPERLICH,	12/05/24	AP	0000083430	PARKS, DURANN/23CRI2C137579098	2,420.00
10100	426.0	COLBATH & SPERLICH,	12/05/24	AP	0000083430	RAAB, MICHAEL PETER/C137579098	512.59
10100	426.0	COLBATH & SPERLICH,	12/05/24	AP	0000083430	QUICK BEAR, ZANE/23CC137579098	638.64
10100	426.0	COLBATH & SPERLICH,	12/05/24	AP	0000083430	SHIVER, CHRISTOPHER/C137579098	1,823.38
10100	426.0	COLBATH & SPERLICH,	12/05/24	AP	0000083430	THOMPSON, CODY/23CRIC137579098	1,274.74
10100	426.0	COLBATH & SPERLICH,	12/05/24	AP	0000083430	WILBY, CHRISTINA A/C137579098	257.20
10100	426.0	COLBATH & SPERLICH,	12/05/24	AP	0000083430	PATTON, DOUGLAS B/23C137579098	796.09
10100	426.0	COLBATH & SPERLICH,	12/05/24	AP	0000083430	PATTON, DOUGLAS B/23C137579098	903.18
10100	426.0	COLBATH & SPERLICH,	12/05/24	AP	0000083430	MCCULLOCH, GAVIN/23CC137579098	390.49
10100	426.0	COLBATH & SPERLICH,	12/05/24	AP	0000083430	HILL, DREW S/23CRI24C137579098	763.59
10100	426.0	COLBATH & SPERLICH,	12/05/24	AP	0000083430	WILBY, CHRISTINA A/C137579098	385.50
10100	426.0	COLBATH & SPERLICH,	12/05/24	AP	0000083430	CROSS DOG, HARLEY/23C137579098	1,607.10
10100	426.0	COLBATH & SPERLICH,	12/05/24	AP	0000083430	MORGAN, MARILYNN/23CC137579098	427.69
10100	426.0	HUSTEAD LAW OFFICE,	12/05/24	AP	0000083449	THORNTON, DAKOTA MICH180979115	972.29
10100	426.0	HUSTEAD LAW OFFICE,	12/05/24	AP	0000083449	ARRINGTON, RAVON JR/H180979115	1,089.27
10100	426.0	HUSTEAD LAW OFFICE,	12/05/24	AP	0000083449	O'NEAL, CHRISTOPHER/H180979115	4,361.81
10100	426.0	HUSTEAD LAW OFFICE,	12/05/24	AP	0000083449	KIRL, BRANDON/23CRI2H180979115	331.95
10100	426.0	HUSTEAD LAW OFFICE,	12/05/24	AP	0000083449	WARRIOR, SAMUEL/23CRH180979115	329.33
10100	426.0	HUSTEAD LAW OFFICE,	12/05/24	AP	0000083449	FLOWERS, SHANTI/23CRH180979115	403.46
10100	426.0	HUSTEAD LAW OFFICE,	12/05/24	AP	0000083449	HOOD, JONITA/23CRI23H180979115	1,143.71
10100	426.0	HUSTEAD LAW OFFICE,	12/05/24	AP	0000083449	CATCHES, EDELYN DORTH180979115	724.11
10100	426.0	HUSTEAD LAW OFFICE,	12/05/24	AP	0000083449	GLINES, GARRETT CHRIH180979115	586.11
10100	426.0	HUSTEAD LAW OFFICE,	12/05/24	AP	0000083449	OLDHORSE, RAELENN J/H180979115	907.27
10100	426.0	HUSTEAD LAW OFFICE,	12/05/24	AP	0000083449	MORTON, JACOB/23CRI2H180979115	783.49
10100	426.0	HUSTEAD LAW OFFICE,	12/05/24	AP	0000083449	MERRIVAL, DANIELLE MH180979115	877.57
10100	426.0	HUSTEAD LAW OFFICE,	12/05/24	AP	0000083449	MEINKE, SHANE/23CRI2H180979115	617.09
10100	426.0	HUSTEAD LAW OFFICE,	12/05/24	AP	0000083449	MARSHALL, MATTHEW H H180979115	402.83
10100	426.0	SKINNER, MATTHEW L.	12/05/24	AP	0000083464	ANDRESS, CHRISTINA/2S321579130	2,132.85
10100	426.0	SKINNER, MATTHEW L.	12/05/24	AP	0000083464	ANDRESS, CHRISTINA/2S321579130	343.10
10100	426.0	SOUTHERN HILLS LAW P	12/05/24	AP	0000083466	TILLMAN, BRANDI/23CRS381079132	172.50
10100	426.0	SOUTHERN HILLS LAW P	12/05/24	AP	0000083466	MILES, CASSIE LOU/23S381079132	241.50
10100	426.0	SOUTHERN HILLS LAW P	12/05/24	AP	0000083466	FONTAINE, BETH RENEE381079132	895.66
10100	426.0	SOUTHERN HILLS LAW P	12/05/24	AP	0000083466	WILLIAMS, LAUREN/23CS381079132	1,665.49
10100	426.0	STEPHENS LAW OFFICE	12/05/24	AP	0000083467	PABLO, DELLA ROSE/23S457579133	900.00
10100	426.0	COLBATH & SPERLICH,	12/19/24	AP	0000083553	WILSON, VERLIE/23CRIC137579245	357.09

DEPARTMENT 153 - COURT APPT ATTORNEY (FR)

FUND	ACCOUNT	NAME	DATE	SOURCE	REFERENCE	DESCRIPTION	AMOUNT
10100	426.0	COLBATH & SPERLICH,	12/19/24	AP	0000083553	TIBBETTS, CASEN JOHNC137579245	616.19
10100	426.0	COLBATH & SPERLICH,	12/19/24	AP	0000083553	TRUJILLO, TAMI CATALC137579245	541.34
10100	426.0	COLBATH & SPERLICH,	12/19/24	AP	0000083553	SHAW, ROBERT/23CRI24C137579245	267.69
10100	426.0	COLBATH & SPERLICH,	12/19/24	AP	0000083553	RANDALL, LEROY/23CRIC137579245	1,085.89
10100	426.0	COLBATH & SPERLICH,	12/19/24	AP	0000083553	PETERS, KELLY RAYE/2C137579245	294.19
10100	426.0	COLBATH & SPERLICH,	12/19/24	AP	0000083553	ORTIZ, KELLI ROSE/23C137579245	349.70
10100	426.0	COLBATH & SPERLICH,	12/19/24	AP	0000083553	RIVARD, JOHN/23CRI24C137579245	1,202.00
10100	426.0	COLBATH & SPERLICH,	12/19/24	AP	0000083553	SHELEY, TIARA/23CRI2C137579245	651.29
10100	426.0	COLBATH & SPERLICH,	12/19/24	AP	0000083553	SHELEY, TIARA/23MAG2C137579245	293.29
10100	426.0	COLBATH & SPERLICH,	12/19/24	AP	0000083553	MCDANIEL, JACKSON/23C137579245	470.80
10100	426.0	COLBATH & SPERLICH,	12/19/24	AP	0000083553	CORY, ROBERT JAMES/2C137579245	344.80
10100	426.0	COLBATH & SPERLICH,	12/19/24	AP	0000083553	GIBSON, CARLO A/23CRC137579245	903.72
10100	426.0	COLBATH & SPERLICH,	12/19/24	AP	0000083553	CORY, ROBERT JAMES/2C137579245	399.80
10100	426.0	COLBATH & SPERLICH,	12/19/24	AP	0000083553	MOREN, KYLE J/23CRI2C137579245	403.27
10100	426.0	COLBATH & SPERLICH,	12/19/24	AP	0000083553	MORRSETTE, DAEMOND/2C137579245	930.16
10100	426.0	COLBATH & SPERLICH,	12/19/24	AP	0000083553	WILSON, MARVIN DALE C137579245	740.20
10100	426.0	COLBATH & SPERLICH,	12/19/24	AP	0000083553	FERNANDEZ, JESUS/23CC137579245	811.45
10100	426.0	COLBATH & SPERLICH,	12/19/24	AP	0000083553	BRIDGES, KRISTINE ENC137579245	381.30
10100	426.0	COLBATH & SPERLICH,	12/19/24	AP	0000083553	FRYER, ANDREW MICHAEC137579245	1,195.18
10100	426.0	COLBATH & SPERLICH,	12/19/24	AP	0000083553	BRINGS PLENTY, FLOYDC137579245	13,847.40
10100	426.0	COLBATH & SPERLICH,	12/19/24	AP	0000083553	KARLOVETZ, REED AND/C137579245	379.69
10100	426.0	COLBATH & SPERLICH,	12/19/24	AP	0000083553	VITALIS, ARTHUR/23CRC137579245	664.68
10100	426.0	COLBATH & SPERLICH,	12/19/24	AP	0000083553	NORQUIST, KAYLIE/23CC137579245	490.70
10100	426.0	COLBATH & SPERLICH,	12/19/24	AP	0000083553	FARRAR, DYLAN TAYLORC137579245	734.40
10100	426.0	COLBATH & SPERLICH,	12/19/24	AP	0000083553	FARRAR, DYLAN TAYLORC137579245	711.20
10100	426.0	COLBATH & SPERLICH,	12/19/24	AP	0000083553	GUTIERREZ, MARCOS/23C137579245	235.00
10100	426.0	COLBATH & SPERLICH,	12/19/24	AP	0000083553	ELLIS, ASHLEY/23CRI2C137579245	631.60
10100	426.0	COLBATH & SPERLICH,	12/19/24	AP	0000083553	CROSS DOG, HARLEY/23C137579245	442.50
10100	426.0	COLBATH & SPERLICH,	12/19/24	AP	0000083553	STANDS, FILMORE/23CRC137579245	383.80
10100	426.0	COLBATH & SPERLICH,	12/19/24	AP	0000083553	TAGUE, JIMMY LEE/23CC137579245	1,052.70
10100	426.0	COLBATH & SPERLICH,	12/19/24	AP	0000083553	LUND, DAVID/23CRI24-C137579245	943.13
10100	426.0	HUSTEAD LAW OFFICE,	12/19/24	AP	0000083569	TRUEBLOOD, VALAURA/2H180979261	708.44
10100	426.0	HUSTEAD LAW OFFICE,	12/19/24	AP	0000083569	FOX, TYLER JAMES/23CH180979261	1,548.96
10100	426.0	HUSTEAD LAW OFFICE,	12/19/24	AP	0000083569	BRIGGS, AMBER/23CRI2H180979261	1,023.44
10100	426.0	HUSTEAD LAW OFFICE,	12/19/24	AP	0000083569	HEART, KEISHA DAWN/2H180979261	772.94
10100	426.0	HUSTEAD LAW OFFICE,	12/19/24	AP	0000083569	PARMLEY, CAYDEN/23CRH180979261	1,469.17
10100	426.0	HUSTEAD LAW OFFICE,	12/19/24	AP	0000083569	RICHTER, JESSE/23CRIH180979261	437.66
10100	426.0	HUSTEAD LAW OFFICE,	12/19/24	AP	0000083569	WINTERS, DUSTY J/23CH180979261	1,182.07
10100	426.0	HUSTEAD LAW OFFICE,	12/19/24	AP	0000083569	ROUBIDEAU, CLEVELANDH180979261	2,536.45
10100	426.0	O'NEILL, JUSTIN	12/19/24	AP	0000083586	BUEG, JOSEPH/23CRI230049479278	1,380.58
10100	426.0	SOUTHERN HILLS LAW P	12/19/24	AP	0000083599	AMERICAN HORSE, JOSHS381079291	295.68
10100	426.0	SOUTHERN HILLS LAW P	12/19/24	AP	0000083599	MOWER, HEATHER/23CRIS381079291	363.20
10100	426.0	SOUTHERN HILLS LAW P	12/19/24	AP	0000083599	BREWER, JODY/23CRI22S381079291	728.23
10100	426.0	SOUTHERN HILLS LAW P	12/19/24	AP	0000083599	TREAS, TYLER LANE/23S381079291	2,805.69
10100	426.0	SOUTHERN HILLS LAW P	12/19/24	AP	0000083599	BURDETTE, COREENA/23S381079291	720.14
10100	426.0	SOUTHERN HILLS LAW P	12/19/24	AP	0000083599	FOSTER, WILLIAM L/23S381079291	814.53
10100	426.0	SOUTHERN HILLS LAW P	12/19/24	AP	0000083599	GOODBEAU, MELINDA L/S381079291	2,923.06
10100	426.0	SOUTHERN HILLS LAW P	12/19/24	AP	0000083599	BURGESS, DEAN/23CRI2S381079291	730.78

\*TRANSFER\* NET CHANGE 264,060.08 4,948.46  
 \*SUPPLEMENT\* 31,155.62

\* REMAIN BUDGET \* 2,956.00CR \*\* TOTAL SPENT - 259,111.62



# 2025 MOU ADDENDUM

between

**SDSU and Fall River County of South Dakota**

*South Dakota State University on behalf of SDSU Extension and the Board of County Commissioners of Fall River County agree to continue their ongoing MOU relationship in 2025 with the updates described below:*

- All references to ‘4-H Youth Program Advisor’ from the previous agreement are now replaced with the new positional nomenclature of ‘4-H Educator.’
- In Section 2, the county cost share amount for 2025 will be \$43,220.

## 2025 ADDENDUM SIGNATURES AND APPROVALS

**For County:**

**For SDSU:**

By: \_\_\_\_\_

By: \_\_\_\_\_

Karla Trautman

\_\_\_\_\_  
[Print Name Above]

Title: Chairperson, County Commission

Title: Director, SDSU Extension

Date: \_\_\_\_\_

Date: \_\_\_\_\_

**County Attest (when applicable):**

**Additional Signature (when applicable):**

By: \_\_\_\_\_

By: \_\_\_\_\_

\_\_\_\_\_  
[Print Name Above]

\_\_\_\_\_  
[Print Name Above]

Title: \_\_\_\_\_  
[Print Title Above]

Title: \_\_\_\_\_

Date: \_\_\_\_\_

Date: \_\_\_\_\_



FYI



To the Honorable Authorized Officer,

June includes Men's Health Month (MHM) and Men's Health Week (MHW) as special awareness periods, with Men's Health Week recognized by Congress as the week leading up to and including Father's Day (June 09-15 in 2025). In recognition of Men's Health Month, **we urge you to issue a proclamation in support of Men's Health Month or Men's Health Week**, as well as a press release encouraging men and boys to be aware of their health needs yearlong.

Men's Health Month is a time to recognize the mental and physical health needs of men and boys while encouraging fathers to be role models through preventive health screenings, healthy living, and seeking needed help. The Covid-19 pandemic has had a devastating impact on men's health in the U.S., dropping male life expectancy by two years, according to a study by Oxford University.

Men's Health Month began in 1994 through the efforts of Men's Health Network and with the Congressional passage of Men's Health Week, sponsored by Senator Bob Dole (KS) and Congressman Bill Richardson (NM). Men's Health Week was signed by President Clinton, and became Public Law 103-264 on May 31, 1994.

As then-Congressman Bill Richardson noted at the time:

***"Recognizing and preventing men's health problems is not just a man's issue. Because of its impact on wives, mothers, daughters, and sisters, men's health is truly a family issue."*** -Congressional Record, May 24, 1994, H3905

To help your community celebrate Men's Health Month, we maintain the 'Wear Blue' program website ([WearBlueForMensHealth.com](http://WearBlueForMensHealth.com)), coordinate 'Wear Blue Day' events ([WearBlueDay.org](http://WearBlueDay.org)), and offer a free MHN HealthZone planning kit ([MHNHealthZone.com](http://MHNHealthZone.com)), designed to help organizations conduct their own events and awareness activities. A free MHM digital toolkit is available at [MensHealthMonth.org](http://MensHealthMonth.org).

Thousands of organizations across the country and around the globe participate in Men's Health Month, promoting the health and wellness of men, boys, fathers, and their families. We also sponsor health awareness fairs and events on Capitol Hill that are attended by hundreds of lawmakers and staff.

With the growing epidemic of suicide and substance abuse, we are again making a special effort to raise awareness of unrecognized and undiagnosed depression and mental stress in males. Yearly, we organize meetings for mental health groups and medical associations, produce white papers and journal articles, op-eds, radio and TV appearances, health fairs, and produce conference presentations.

We ask that you help to raise awareness of critical health issues that affect so many boys, men, and families. Please take this time to encourage males in your community to engage in healthy behaviors, obtain regular screenings, and to seek help when needed by issuing a proclamation declaring June as Men's Health Month in your community. Your proclamation will be displayed in Congress and, with your permission, a copy will be placed on [MensHealthMonth.org](http://MensHealthMonth.org) for the citizens of your state and across the nation to view.

For convenience, enclosed is a sample proclamation.

***Please send proclamations to:***

***Men's Health Network,  
P.O. Box 77476,  
Washington, DC 20013***

Thank you for your essential assistance in promoting health awareness in your community. If you include additional copies of the proclamation, we will present them to your Congressional delegation. Please also consider participating in 'Wear Blue Day,' on Friday, June 13, 2025, and post your 'Wear Blue' photos to social media and with the hashtag #ShowUsYourBlue.

Sincerely,

The Men's Health Network Team



## **SAMPLE PROCLAMATION**

**WHEREAS** Men's Health Month is part of an ongoing international effort to educate men, boys, and their families about receiving regular disease prevention screenings and living healthier lifestyles; and

**WHEREAS** Nationwide, life expectancy for men averages five years fewer than that of women, with men experiencing higher rates of health problems such as diabetes, obesity, cancer, heart disease, and premature mortality; and,

**WHEREAS** Men's Health Network is recognized for their esteem in the creation of, maintenance, and champion over National efforts of officially distinguished Men's Health Month and Men's Health Week, as established in 1994; and,

**WHEREAS** Men's Health Month is a time for the public to recognize the mental and physical health needs of men and boys while encouraging fathers to be role models for their children through preventive health screenings, healthy living and seeking needed help; and

**WHEREAS** The growing epidemic of suicide and substance abuse requires special effort to raise awareness of unrecognized and undiagnosed depression and mental stress in boys and men; and

**WHEREAS** The centerpiece of Men's Health Month is National Men's Health Week, a special awareness period passed by Congress and signed into law by President Bill Clinton on May 31, 1994, and officially facilitated yearly by the efforts of Men's Health Network.

NOW, THEREFORE I, <<NAME>> of <<CITY/STATE>> do hereby proclaim June 09-15, 2025 as Men's Health Week in <<CITY/STATE>>